

DIMENSIONS FOR OVERALL HEIGHT AND LENGTH ARE APPROXIMATE

OVERALL HEIGHT = 100.25"

OVERALL WIDTH WITH RUB

RAILS & FENDERETTES = 95"

(7) WHELEN 600 SUPER LED WITH CLEAR LENSES
RED / RED / RED / WHITE / RED / RED / RED

(5) TECNIQ S330 AMBER
MINI-LED MARKER LIGHTS

OEM MIRRORS

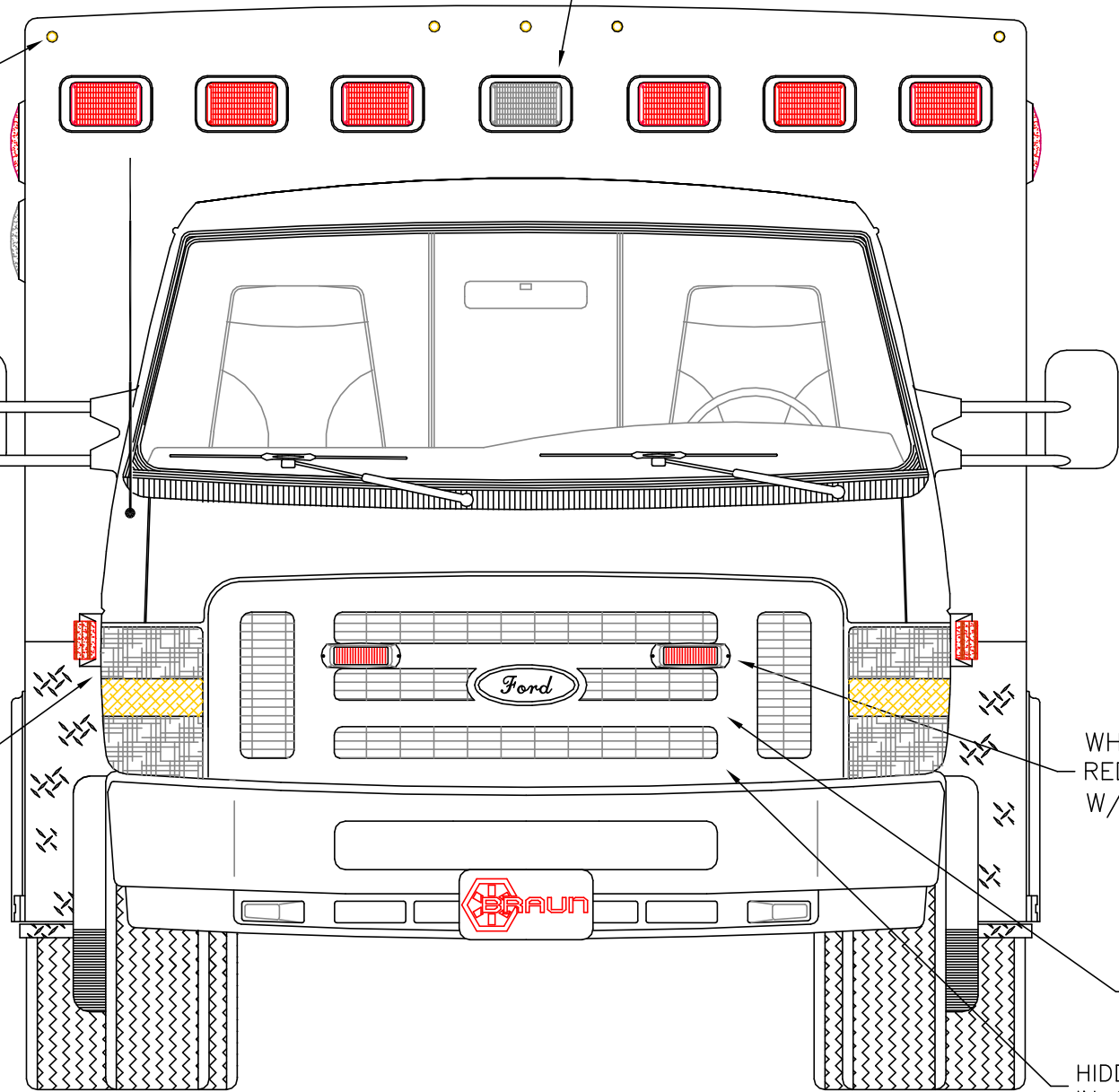
FLASHING HEADLIGHTS W/
DAYTIME RUNNING LIGHTS

NOTE:
THIS DRAWING REPRESENTS
THE STANDARD LAYOUT
FOR THIS MODEL.

WHELEN 500 SERIES
RED SUPER LED
W/CPI HOUSINGS
CLEAR LENSES

(2) WHELEN SA315
SERIES SIREN
SPEAKERS BEHIND
GRILLE AREA

HIDDEN UNLOCK SWITCH
IN GRILLE AREA



THIS DRAWING IS FOR REPRESENTATIONAL PURPOSES ONLY. DETAILS ARE CONCEPTUAL AND ARE SUBJECT TO CHANGE DURING DESIGN AND CONSTRUCTION
DIMENSIONS ARE APPROXIMATE UNLESS NOTED OTHERWISE TO MEET A SPECIFIC CUSTOMER NEED.



2014 FRONT EXTERIOR VIEW
SIGNATURE SERIES / FORD E350 CHASSIS

1:16

DATE:
08 APR 13
DWG. GLF
REV. NR

DRAWING NO.
14-SS-E350-1

DIMENSIONS FOR OVERALL HEIGHT AND LENGTH ARE APPROXIMATE
 OVERALL HEIGHT = 100.25"
 OVERALL WIDTH WITH RUB
 RAILS & FENDERETTES = 95"
 FLOOR HEIGHT = 31"

(5) WHELEN 600 SUPER LED WARNING LIGHTS,
 (2) WHELEN 600 CLEAR HALOGEN LOAD LIGHTS:
 RED / RED / LOAD / AMBER / LOAD / RED / RED
 ALL WITH CLEAR LENSES

(5) TECNIQ S330 RED
 MINI-LED MARKER LIGHTS

(2) WHELEN 900 RED
 SUPER LED LIGHTS
 WITH CLEAR LENSES

CAST PRODUCTS
 DOOR GRABBERS

LED LICENSE
 PLATE LIGHT

ONE (1) EACH SIDE
 WHELEN
 600 LED BRAKE/TAIL,
 600 LED TURN,
 600 HALOGEN BACK-UP
 LIGHTS AS FAR OUTBOARD
 AS POSSIBLE.

MUD FLAPS

NOTE:
 THIS DRAWING REPRESENTS
 THE STANDARD LAYOUT
 FOR THIS MODEL.

INDEPENDENT BUMPER WITH
 NON-SKID FLIP-UP CENTER
 STEP AND COT PROTECTOR
 ON STEP EDGE.

COT PROTECTOR
 ON STEP EDGE

THIS DRAWING IS FOR REPRESENTATIONAL PURPOSES ONLY. DETAILS ARE CONCEPTUAL AND ARE SUBJECT TO CHANGE DURING DESIGN AND CONSTRUCTION
 DIMENSIONS ARE APPROXIMATE UNLESS NOTED OTHERWISE TO MEET A SPECIFIC CUSTOMER NEED.



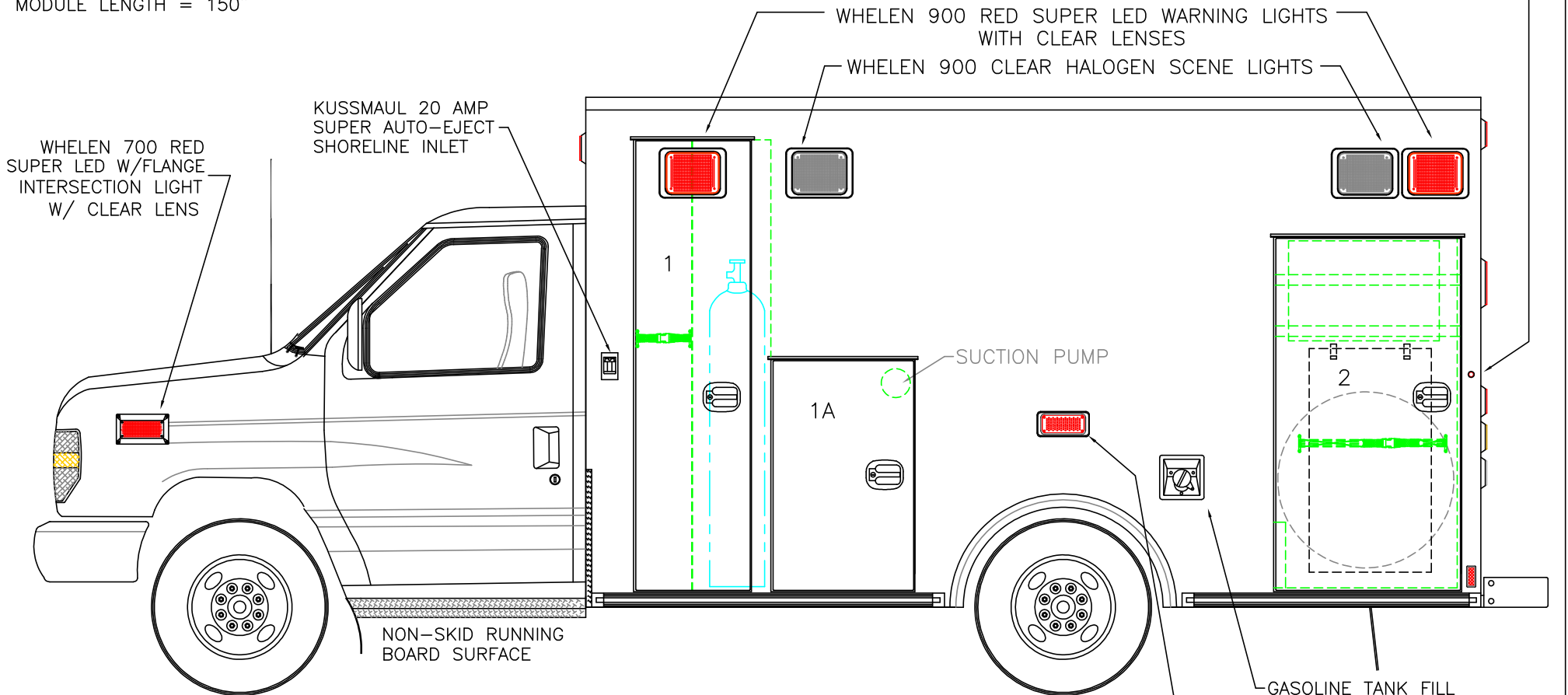
2014 REAR EXTERIOR VIEW
 SIGNATURE SERIES

DATE: 08 APR 13	DRAWING NO.
DWG. GLF	REV. NR 14-SS-E350-2

1:16

DIMENSIONS FOR OVERALL HEIGHT AND LENGTH ARE APPROXIMATE
 OVERALL HEIGHT = 100.25"
 OVERALL LENGTH = 253.75"
 MODULE LENGTH = 150"

TECNIQ S330 RED MINI-LED MARKER LIGHT TO ALSO FLASH WITH TURN SIGNAL



COMPARTMENT
 O.S.S #1

CLEAR OPENING: 73.75h x 16.00w
 INSIDE DIMS: 75.00h x 22.75w x 18.50d
 OXYGEN STORAGE ON RIGHT SIDE OF VERTICAL DIVIDER
 DIVIDER DEPTH = 8" TO ALLOW ALTERNATE STAIR
 CHAIR STORAGE OUTBOARD OF OXYGEN
 (1) STRAP ON LEFT SIDE OF DIVIDER

O.S.S #1A

CLEAR OPENING: 37.50h x 20.75w
 INSIDE DIM'S.: 42.50h x 24.00w x 18.50d

O.S.S #2

CLEAR OPENING: 57.75h x 28.00w
 INSIDE DIM'S.: 59.50h x 31.25w x 18.50d
 INSIDE/OUTSIDE ACCESS
 (2) ADJUSTABLE SHELVES: UPPER=FULL DEPTH; LOWER=REDUCED DEPTH DUE TO STAIR CHAIR ON INSIDE OF DOOR
 MOUNTING HOOKS AND STRAP ON INSIDE OF DOOR FOR STRYKER 6252 OR FERNO EZ-GLIDE STAIR CHAIR
 OPTIONAL SPARE TIRE STORAGE (MOUNT NOT INCLUDED AS STANDARD)
 NOTE: STAIR CHAIR AND SPARE STORAGE WILL NOT FIT AT SAME TIME

NOTE:

THIS DRAWING REPRESENTS THE STANDARD LAYOUT FOR THIS MODEL.

THIS DRAWING IS FOR REPRESENTATIONAL PURPOSES ONLY. DETAILS ARE CONCEPTUAL AND ARE SUBJECT TO CHANGE DURING DESIGN AND CONSTRUCTION DIMENSIONS ARE APPROXIMATE UNLESS NOTED OTHERWISE TO MEET A SPECIFIC CUSTOMER NEED.



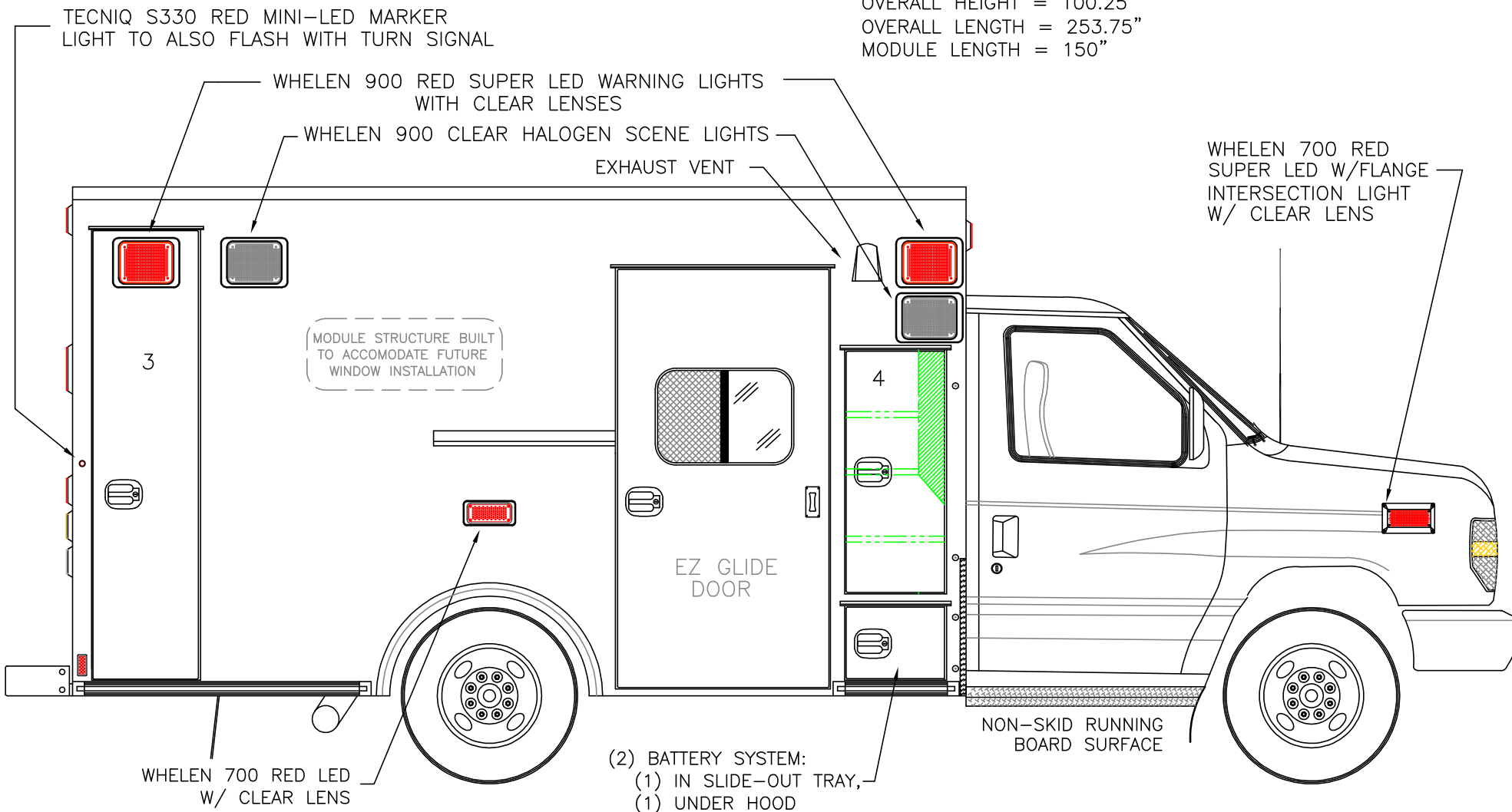
2014 STREETSIDE EXTERIOR VIEW
 SIGNATURE SERIES / FORD E350 CHASSIS

1:24

DATE:	08 APR 13
DWG.	REV.
GLF	NR

DRAWING NO.	14-SS-E350-3
-------------	--------------

DIMENSIONS FOR OVERALL HEIGHT AND LENGTH ARE APPROXIMATE
 OVERALL HEIGHT = 100.25"
 OVERALL LENGTH = 253.75"
 MODULE LENGTH = 150"



O.S.S #3
 CLEAR OPENING: 73.75h x 15.00w
 INSIDE DIM'S.: 75.00h x 18.00w x 18.50d
 BACKBOARD/SCOOP STORAGE

O.S.S #4
 CLEAR OPENING: 39.00h x 15.50w
 INSIDE DIM'S.: SEE PARTITION INTERIOR VIEW
 INSIDE/OUTSIDE ACCESS

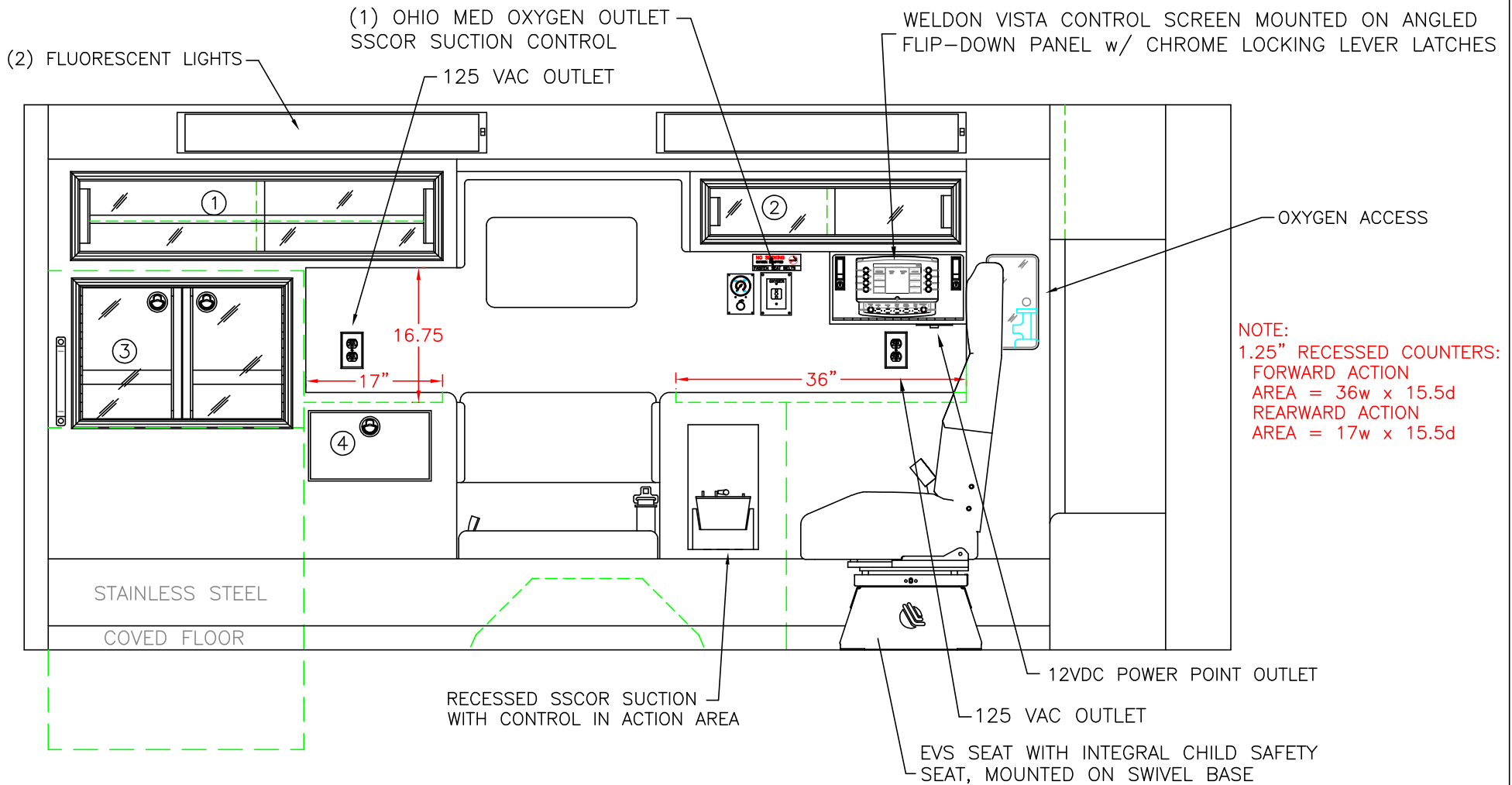
NOTE:
 THIS DRAWING REPRESENTS
 THE STANDARD LAYOUT
 FOR THIS MODEL.

THIS DRAWING IS FOR REPRESENTATIONAL PURPOSES ONLY. DETAILS ARE CONCEPTUAL AND ARE SUBJECT TO CHANGE DURING DESIGN AND CONSTRUCTION
 DIMENSIONS ARE APPROXIMATE UNLESS NOTED OTHERWISE TO MEET A SPECIFIC CUSTOMER NEED.



2014 CURB EXTERIOR VIEW
 SIGNATURE SERIES / FORD E350 CHASSIS

DATE:	08 APR 13		DRAWING NO.
DWG.	GLF	REV.	NR
1:24			14-SS-E350-4



COMPARTMENT:

- #1 DOOR OPENING: 8.75h x 44.00w
INSIDE DIMS: 10.50h x 45.50w x 16.25d
(1) ADJUSTABLE SHELF
- #2 DOOR OPENING: 5.75h x 30.00w
INSIDE DIMS: 8.50h x 31.75w x 15.00d

- #3 DOOR OPENING: 16.50h x 24.50w
INSIDE/OUTSIDE COMPARTMENT ACCESS
HINGED ACRYLIC DOORS
STAINLESS STEEL FLUSH PULL LATCHES

- #4 PULL-OUT DRAWER
INSIDE DIMS: 7.00h x 13.75w x 15.75d
STAINLESS STEEL FLUSH PULL LATCH

CABINETS TO BE ALUMINUM

NOTE:
THIS DRAWING REPRESENTS
THE STANDARD LAYOUT
FOR THIS MODEL.

THIS DRAWING IS FOR REPRESENTATIONAL PURPOSES ONLY. DETAILS ARE CONCEPTUAL AND ARE SUBJECT TO CHANGE DURING DESIGN AND CONSTRUCTION DIMENSIONS ARE APPROXIMATE UNLESS NOTED OTHERWISE TO MEET A SPECIFIC CUSTOMER NEED.

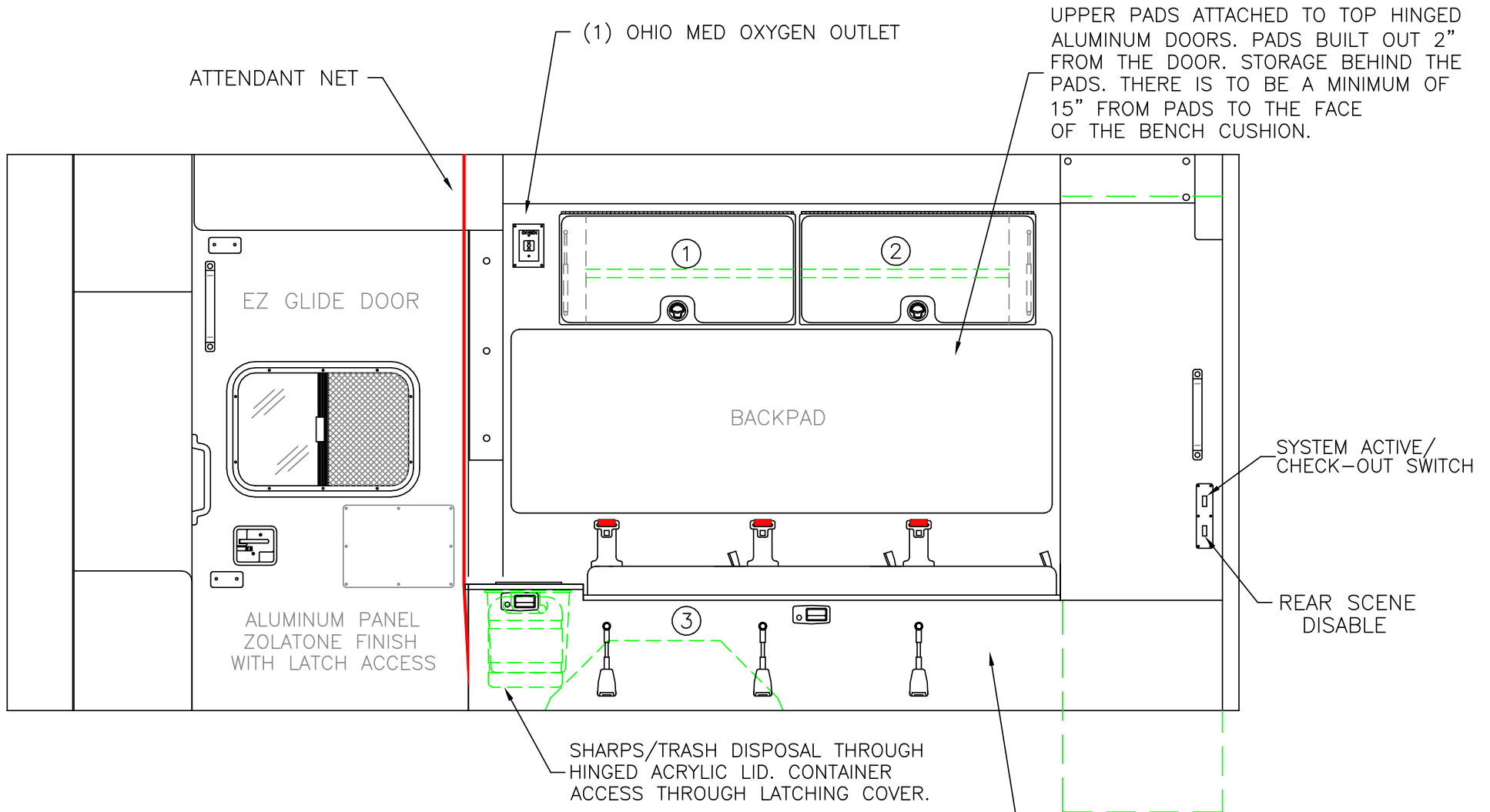


2014 STREETSIDE INTERIOR
SIGNATURE SERIES

1:18

DATE:	08 APR 13
DWG.:	GLF
REV.:	NR

DRAWING NO.	14-SS-E350-5
-------------	--------------



COMPARTMENT

#1-#2 DOOR OPENING: 13.50h x 25.25w
 INSIDE DIMS: 13.50h x 25.25w x 4.50d
 (1) ADJUSTABLE SHELF PER CABINET
 TOP HINGED ALUMINUM DOORS w/ PADS
 STAINLESS STEEL FLUSH PULL LATCHES

#3 INSIDE DIMS: 14.25h x 72.00w x 18.50d

CABINETS TO BE ALUMINUM

NOTE:
 THIS DRAWING REPRESENTS
 THE STANDARD LAYOUT
 FOR THIS MODEL.

THIS DRAWING IS FOR REPRESENTATIONAL PURPOSES ONLY. DETAILS ARE CONCEPTUAL AND ARE SUBJECT TO CHANGE DURING DESIGN AND CONSTRUCTION
 DIMENSIONS ARE APPROXIMATE UNLESS NOTED OTHERWISE TO MEET A SPECIFIC CUSTOMER NEED.

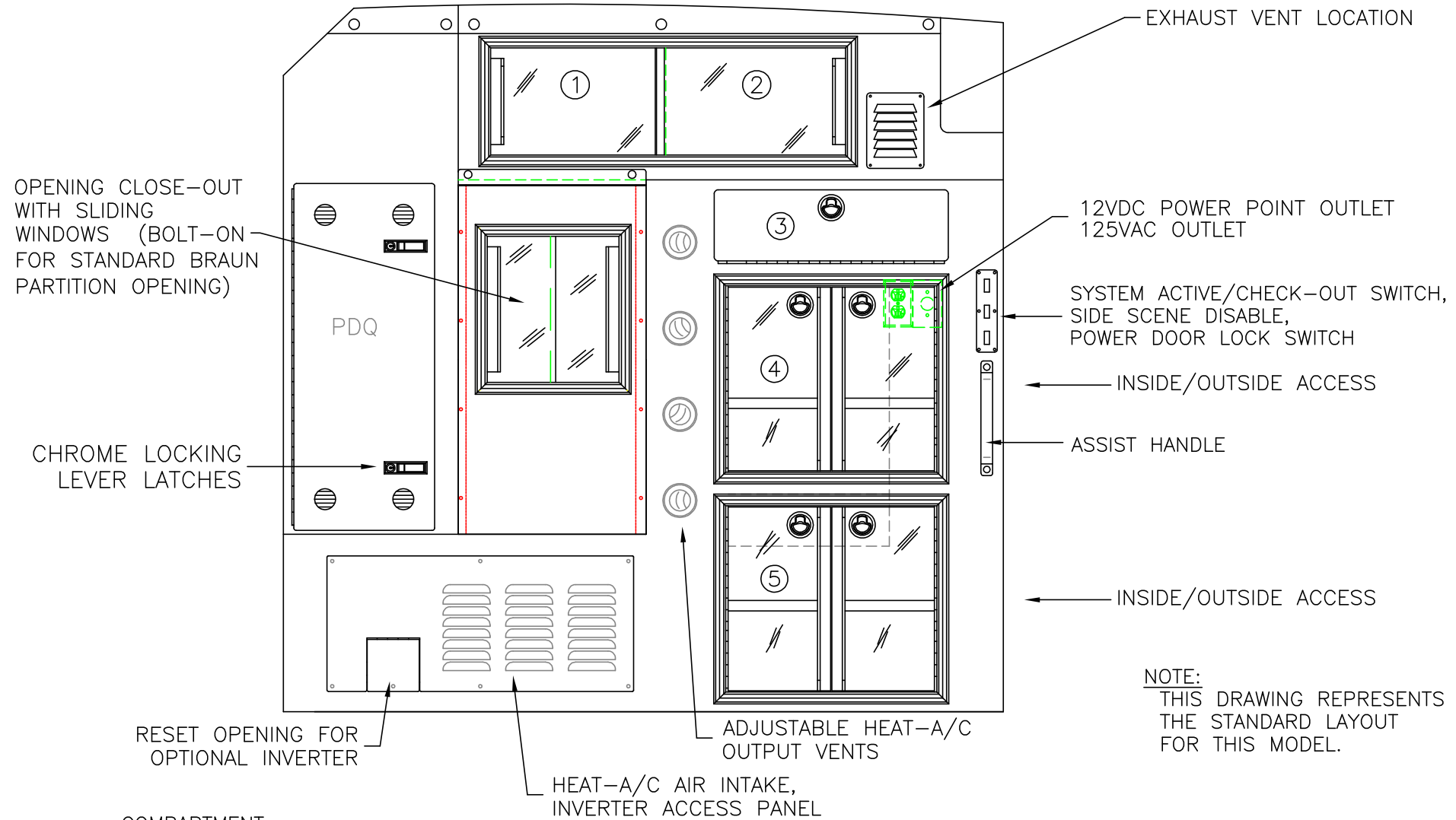


2014 CURBSIDE INTERIOR VIEW
 SIGNATURE SERIES

1:18

DATE: 08 APR 13	
DWG. AAB	REV. NR

DRAWING NO. 14-SS-E350-6



NOTE:
THIS DRAWING REPRESENTS
THE STANDARD LAYOUT
FOR THIS MODEL.

COMPARTMENT
 #1/#2 DOOR OPENING: 10.25h x 34.00w
 INSIDE DIMS: 13.25h x 35.75w x 13.25d
 PERMANENT DIVIDER(CENTERED)
 #3 DROP-DOWN HINGED ALUMINUM DOOR
 WITH STAINLESS STEEL FLUSH PULL LATCH
 OPENING DIMS: 6.50h x 22.00w
 INSIDE DIMS: 7.50h x 22.00w x 14.25d

#4, #5 DOOR OPENINGS: 17.75h x 20.00w
 INSIDE DIMS: 19.25h x 28.00w x 13.25d
 RECESSED .375" ACRYLIC DOORS WITH FULL LENGTH HANDLES
 (2) STAINLESS STEEL FLUSH PULL LATCHES PER CABINET
 (1) ADJUSTABLE SHELF PER COMPARTMENT

CABINETS TO BE ALUMINUM

THIS DRAWING IS FOR REPRESENTATIONAL PURPOSES ONLY. DETAILS ARE CONCEPTUAL AND ARE SUBJECT TO CHANGE DURING DESIGN AND CONSTRUCTION DIMENSIONS ARE APPROXIMATE UNLESS NOTED OTHERWISE TO MEET A SPECIFIC CUSTOMER NEED.



2014 PARTITION INTERIOR VIEW
SIGNATURE SERIES

DATE: 08 APR 13		DRAWING NO.
DWG. GLF	REV. NR	14-SS-E350-7

1:14

ATTENDANT NET

RECESSED SHARPS/WASTE

ALUMINUM PANEL
ZOLATONE FINISH
WITH LATCH ACCESS

ALUMINUM PANEL
ZOLATONE FINISH
WITH LATCH ACCESS

RED/WHITE REFLECTIVE STRIP
ON INSIDE OF EACH DOOR

NOTE:
THIS DRAWING REPRESENTS
THE STANDARD LAYOUT
FOR THIS MODEL.

THIS DRAWING IS FOR REPRESENTATIONAL PURPOSES ONLY. DETAILS ARE CONCEPTUAL AND ARE SUBJECT TO CHANGE DURING DESIGN AND CONSTRUCTION DIMENSIONS ARE APPROXIMATE UNLESS NOTED OTHERWISE TO MEET A SPECIFIC CUSTOMER NEED.

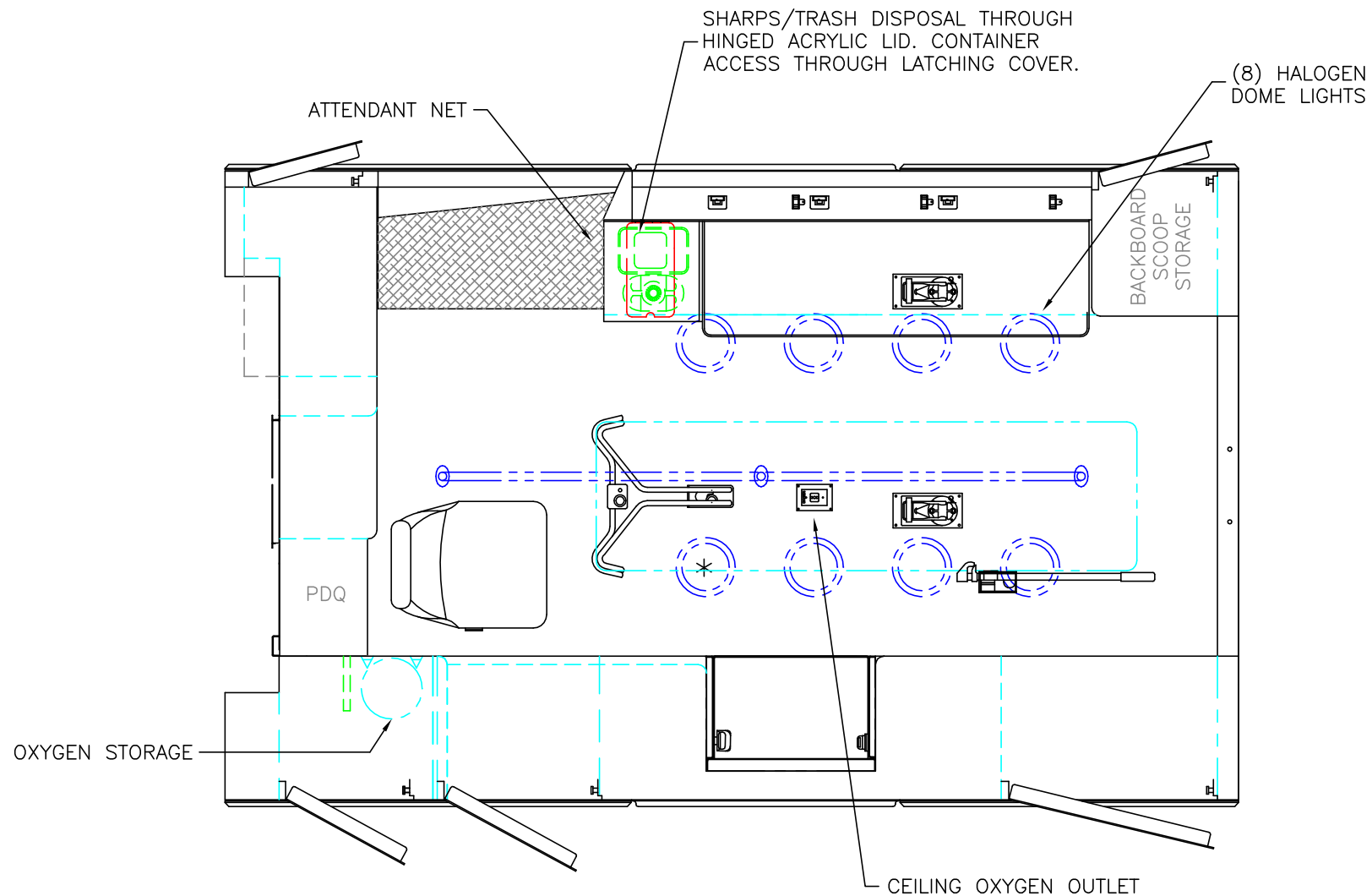


2014 REAR INTERIOR VIEW
SIGNATURE SERIES

1:13

DATE:
08 APR 13
DWG. GLF
REV. NR

DRAWING NO.
14-SS-E350-8



* (1) ANTENNA BASE LOCATED OUTBOARD OF DOME LIGHT WITH COAX SERVICE LOOP

STRYKER CENTER MOUNT COT HARDWARE

 = (2) RECESSED CAST PRODUCTS CEILING IV HANGERS

HEAD ROOM = 68"
 OVERALL WIDTH WITH RUB
 RAILS & FENDERETTES = 95"
 MODULE LENGTH = 150"

NOTE:
 THIS DRAWING REPRESENTS
 THE STANDARD LAYOUT
 FOR THIS MODEL.

THIS DRAWING IS FOR REPRESENTATIONAL PURPOSES ONLY. DETAILS ARE CONCEPTUAL AND ARE SUBJECT TO CHANGE DURING DESIGN AND CONSTRUCTION DIMENSIONS ARE APPROXIMATE UNLESS NOTED OTHERWISE TO MEET A SPECIFIC CUSTOMER NEED.



2014 FLOOR VIEW
 SIGNATURE SERIES

1:24

DATE:	08 APR 13
DWG.	REV.
GLF	NR

DRAWING NO.
14-SS-E350-9