

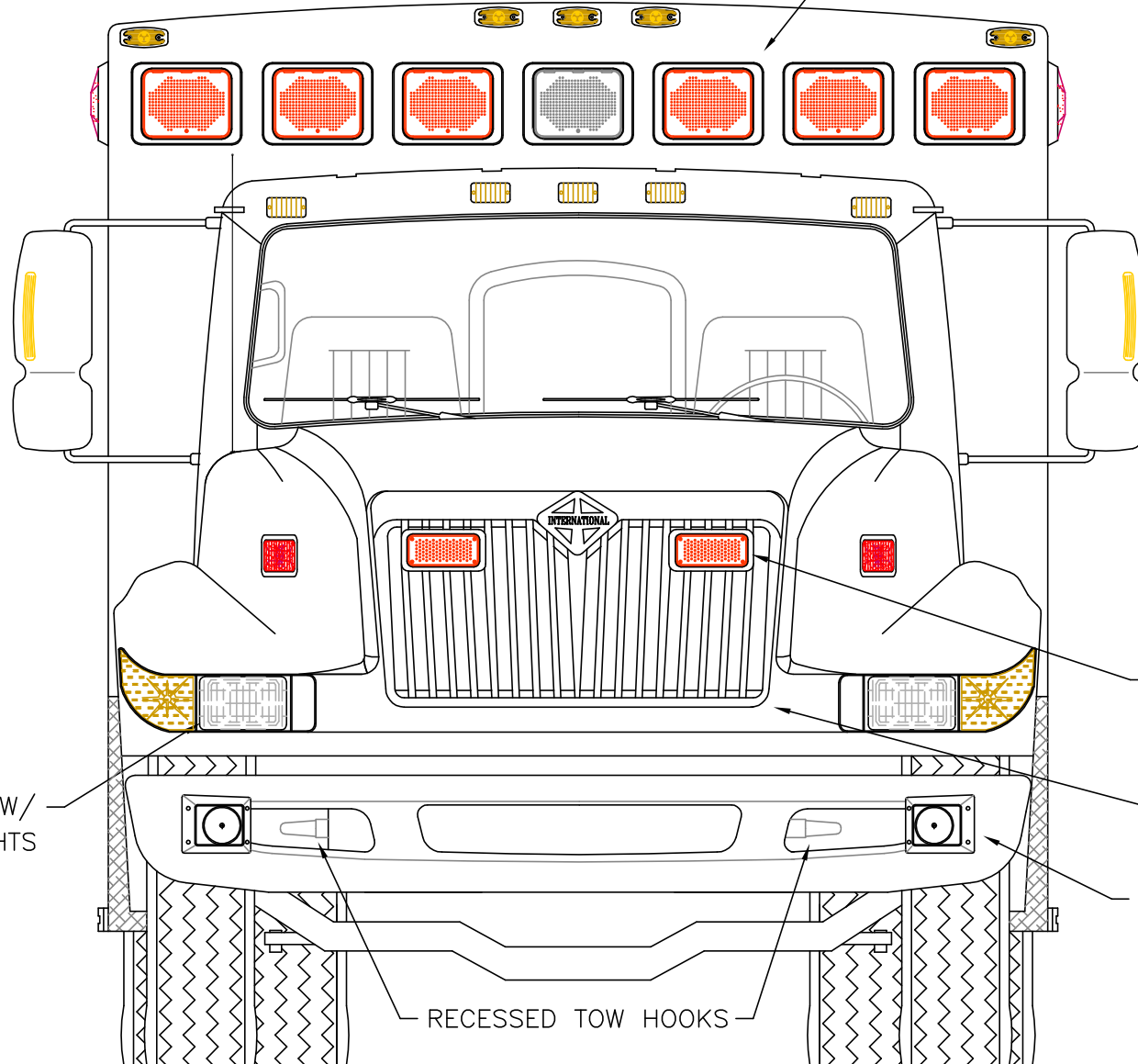
DIMENSIONS FOR OVERALL HEIGHT AND LENGTH ARE APPROXIMATE

OVERALL HEIGHT = 112"

OVERALL WIDTH WITH RUB

RAILS & FENDERETTES = 98"

(7) WHELEN 900 SUPER LED WARNING LIGHTS  
RED/RED/RED/WHITE/RED/RED/RED  
WITH CLEAR LENSES



(2) WHELEN 700  
RED SUPER LED  
GRILLE LIGHTS  
WITH CLEAR LENSES

HIDDEN UNLOCK SWITCH  
IN GRILLE AREA

(2) CAST PRODUCTS  
100-WATT SIREN SPEAKERS  
RECESSED INTO BUMPER

FLASHING HEADLIGHTS W/  
DAYTIME RUNNING LIGHTS

RECESSED TOW HOOKS

THIS DRAWING IS FOR REPRESENTATIONAL PURPOSES ONLY. DETAILS ARE CONCEPTUAL AND ARE SUBJECT TO CHANGE DURING DESIGN AND CONSTRUCTION  
DIMENSIONS ARE APPROXIMATE UNLESS NOTED OTHERWISE TO MEET A SPECIFIC CUSTOMER NEED.



2014 FRONT EXTERIOR VIEW  
SUPER CHIEF-I/INTERNATIONAL 4300LP CHASSIS

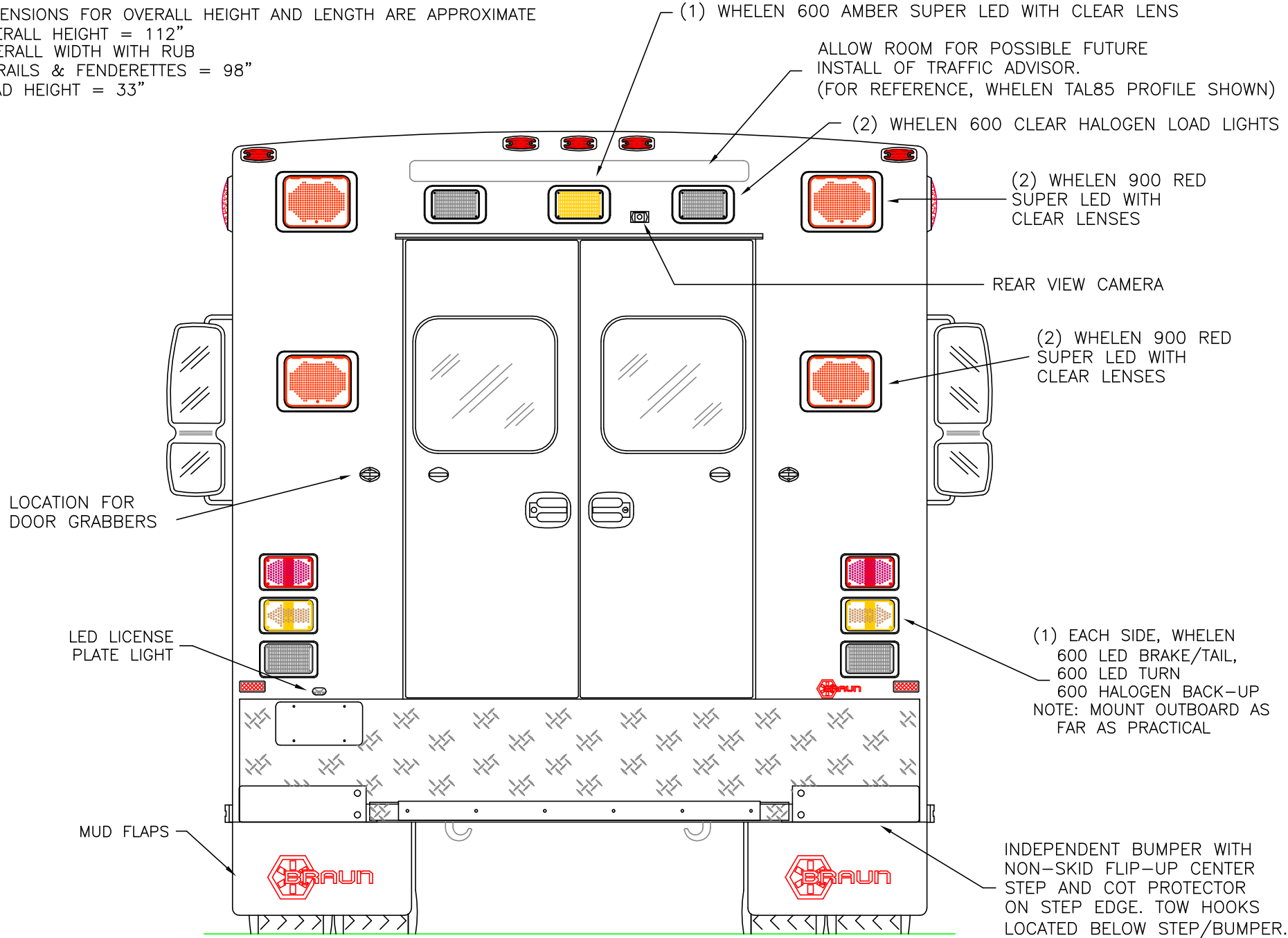
1:18

DATE:  
08 APR 13  
DWG. REV.  
GLF NR

DRAWING NO.  
14SC4300-1

DIMENSIONS FOR OVERALL HEIGHT AND LENGTH ARE APPROXIMATE  
 OVERALL HEIGHT = 112"  
 OVERALL WIDTH WITH RUB  
 RAILS & FENDERETTES = 98"  
 LOAD HEIGHT = 33"

ALLOW ROOM FOR POSSIBLE FUTURE  
 INSTALL OF TRAFFIC ADVISOR.  
 (FOR REFERENCE, WHELEN TAL85 PROFILE SHOWN)



(1) WHELEN 600 AMBER SUPER LED WITH CLEAR LENS

(2) WHELEN 600 CLEAR HALOGEN LOAD LIGHTS

(2) WHELEN 900 RED SUPER LED WITH CLEAR LENSES

REAR VIEW CAMERA

(2) WHELEN 900 RED SUPER LED WITH CLEAR LENSES

LOCATION FOR DOOR GRABBERS

LED LICENSE PLATE LIGHT

(1) EACH SIDE, WHELEN 600 LED BRAKE/TAIL, 600 LED TURN 600 HALOGEN BACK-UP  
 NOTE: MOUNT OUTBOARD AS FAR AS PRACTICAL

MUD FLAPS

INDEPENDENT BUMPER WITH NON-SKID FLIP-UP CENTER STEP AND COT PROTECTOR ON STEP EDGE. TOW HOOKS LOCATED BELOW STEP/BUMPER.

THIS DRAWING IS FOR REPRESENTATIONAL PURPOSES ONLY. DETAILS ARE CONCEPTUAL AND ARE SUBJECT TO CHANGE DURING DESIGN AND CONSTRUCTION DIMENSIONS ARE APPROXIMATE UNLESS NOTED OTHERWISE TO MEET A SPECIFIC CUSTOMER NEED.

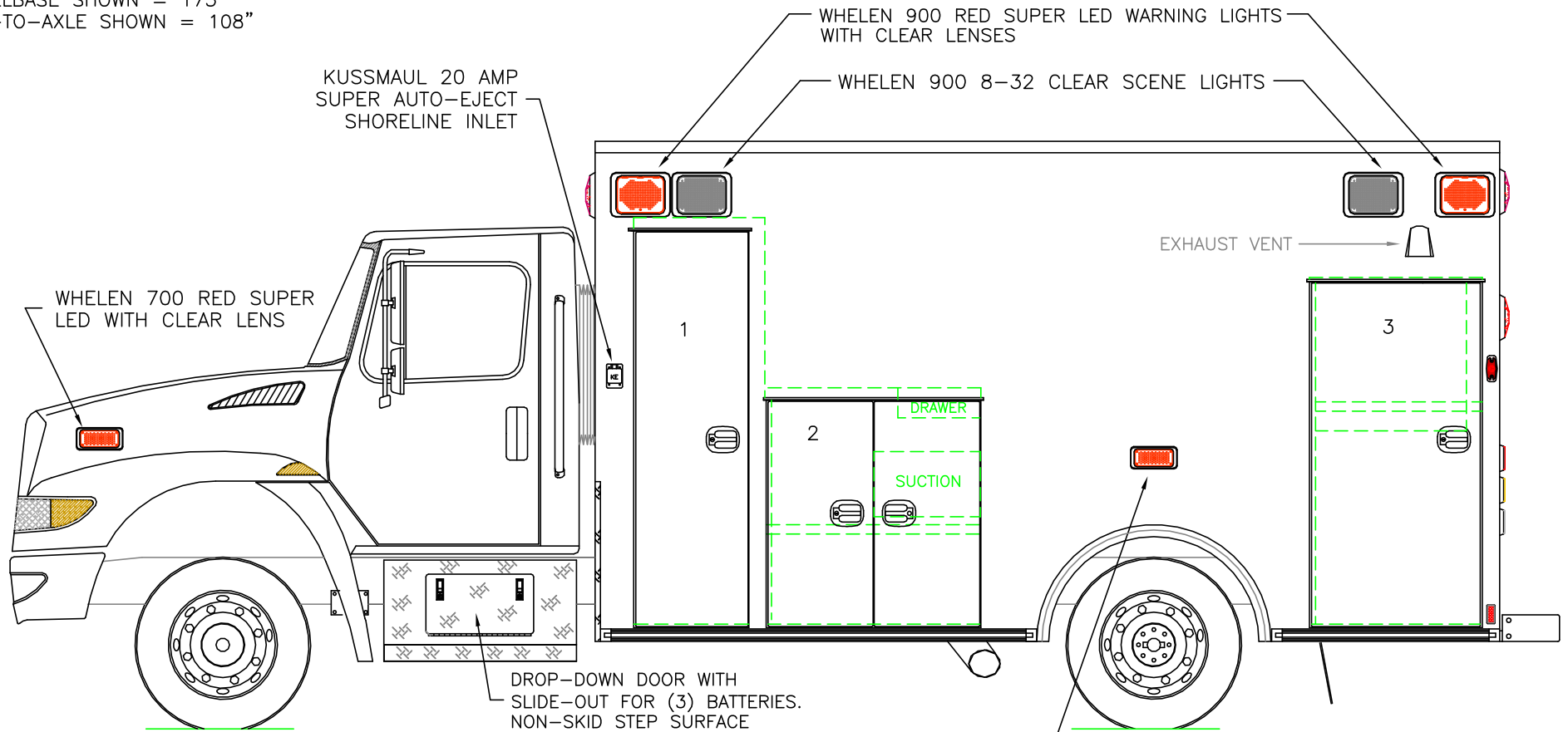


2014 REAR EXTERIOR VIEW  
 SUPER CHIEF-I/INTERNATIONAL 4300LP CHASSIS

1:18

DATE: 08 APR 13		DRAWING NO. 14SC4300-2	
DWG. GLF	REV. NR		

DIMENSIONS FOR OVERALL HEIGHT AND LENGTH ARE APPROXIMATE  
 OVERALL HEIGHT = 112"  
 OVERALL LENGTH = 291.5"  
 MODULE LENGTH = 170"  
 WHEELBASE SHOWN = 175"  
 CAB-TO-AXLE SHOWN = 108"



COMPARTMENT

O.S.S #1

CLEAR OPENING: 73.00h x 18.25w  
 INSIDE DIM'S.: 76.50h x 24.50w x 21.75d  
 BACKBOARD/SCOOP STORAGE

O.S.S #2

CLEAR OPENING: 41.25h x 34.75w  
 INSIDE DIM'S.: 44.50h x 39.50w x 21.75d  
 (1) ADJUSTABLE SHELF

O.S.S #3

CLEAR OPENING: 63.50h x 28.75w  
 INSIDE DIM'S.: 65.25h x 31.25w x 21.75d  
 INSIDE/OUTSIDE ACCESS  
 (1) ADJUSTABLE SHELF

COMPARTMENTS WITH ADJUSTABLE SHELVES HAVE  
 RECESSED UNISTRUT SHELF TRACK

THIS DRAWING IS FOR REPRESENTATIONAL PURPOSES ONLY. DETAILS ARE CONCEPTUAL AND ARE SUBJECT TO CHANGE DURING DESIGN AND CONSTRUCTION  
 DIMENSIONS ARE APPROXIMATE UNLESS NOTED OTHERWISE TO MEET A SPECIFIC CUSTOMER NEED.



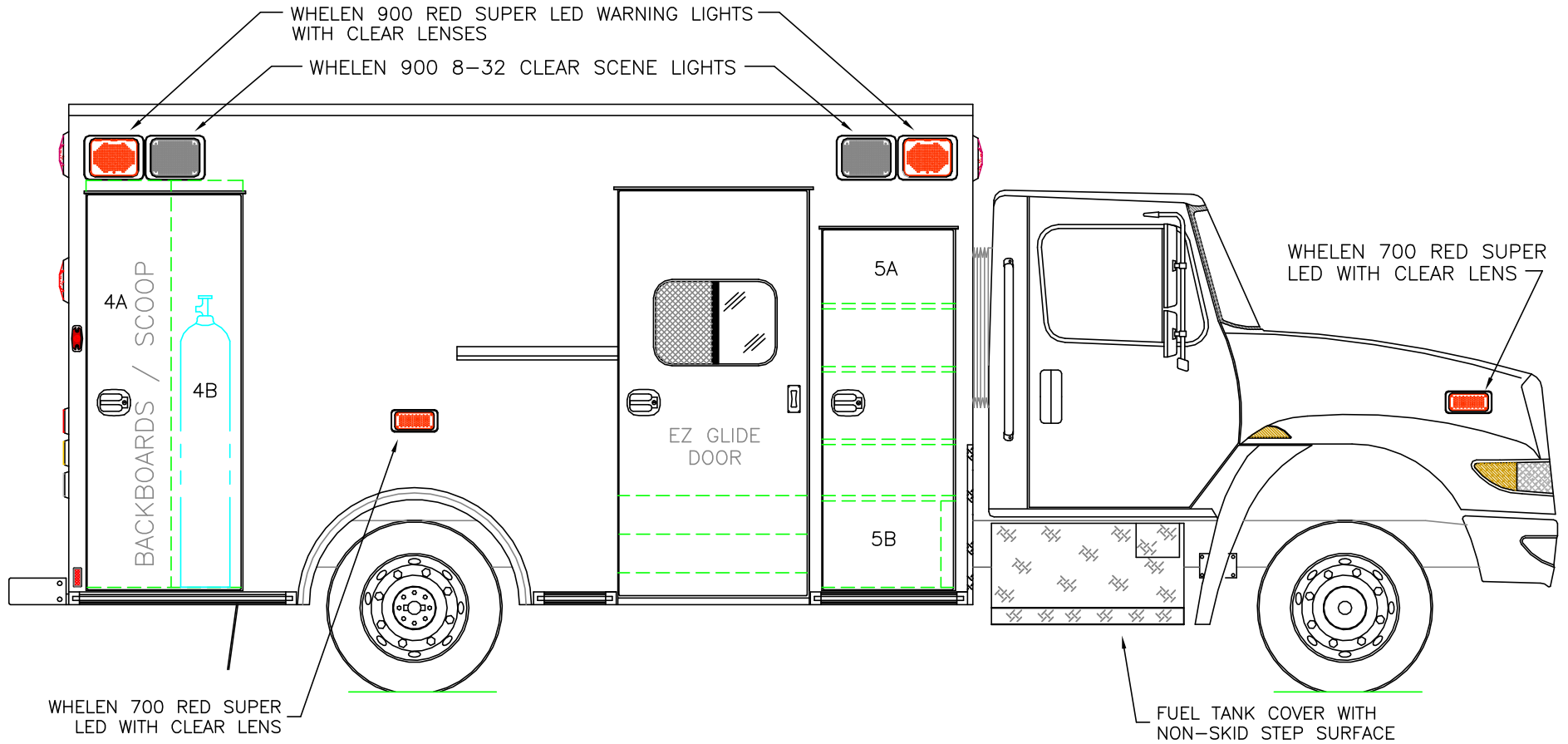
2014 STREETSIDE EXTERIOR VIEW  
 SUPER CHIEF-I/INTERNATIONAL 4300LP CHASSIS

1:30

DATE:	08 APR 13	
DWG.	GLF	REV NR

DRAWING NO.	14SC4300-3
-------------	------------

DIMENSIONS FOR OVERALL HEIGHT AND LENGTH ARE APPROXIMATE  
 OVERALL HEIGHT = 112"  
 OVERALL LENGTH = 291.5"  
 MODULE LENGTH = 170"  
 WHEELBASE SHOWN = 175"  
 CAB-TO-AXLE SHOWN = 108"



COMPARTMENT  
O.S.S #4

CLEAR OPENING: 73.00h x 25.25w  
 INSIDE DIM'S. 4A: 76.50h x 16.00w x 21.75d  
 BACKBOARD/SCOOP STORAGE

INSIDE DIM'S. 4B: 76.50h x 13.50w x 13.00d  
 OXYGEN CYLINDER STORAGE

O.S.S #5

CLEAR OPENING: 66.50h x 21.50w  
 INSIDE DIM'S. 5A: SEE PARTITION INTERIOR VIEW  
 INSIDE/OUTSIDE STORAGE WITH (3) ADJUSTABLE SHELVES

INSIDE DIM'S. 5B: 16.00h x 24.75w x 19.00d

COMPARTMENTS WITH ADJUSTABLE SHELVES HAVE  
 RECESSED UNISTRUT SHELF TRACK

THIS DRAWING IS FOR REPRESENTATIONAL PURPOSES ONLY. DETAILS ARE CONCEPTUAL AND ARE SUBJECT TO CHANGE DURING DESIGN AND CONSTRUCTION  
 DIMENSIONS ARE APPROXIMATE UNLESS NOTED OTHERWISE TO MEET A SPECIFIC CUSTOMER NEED.

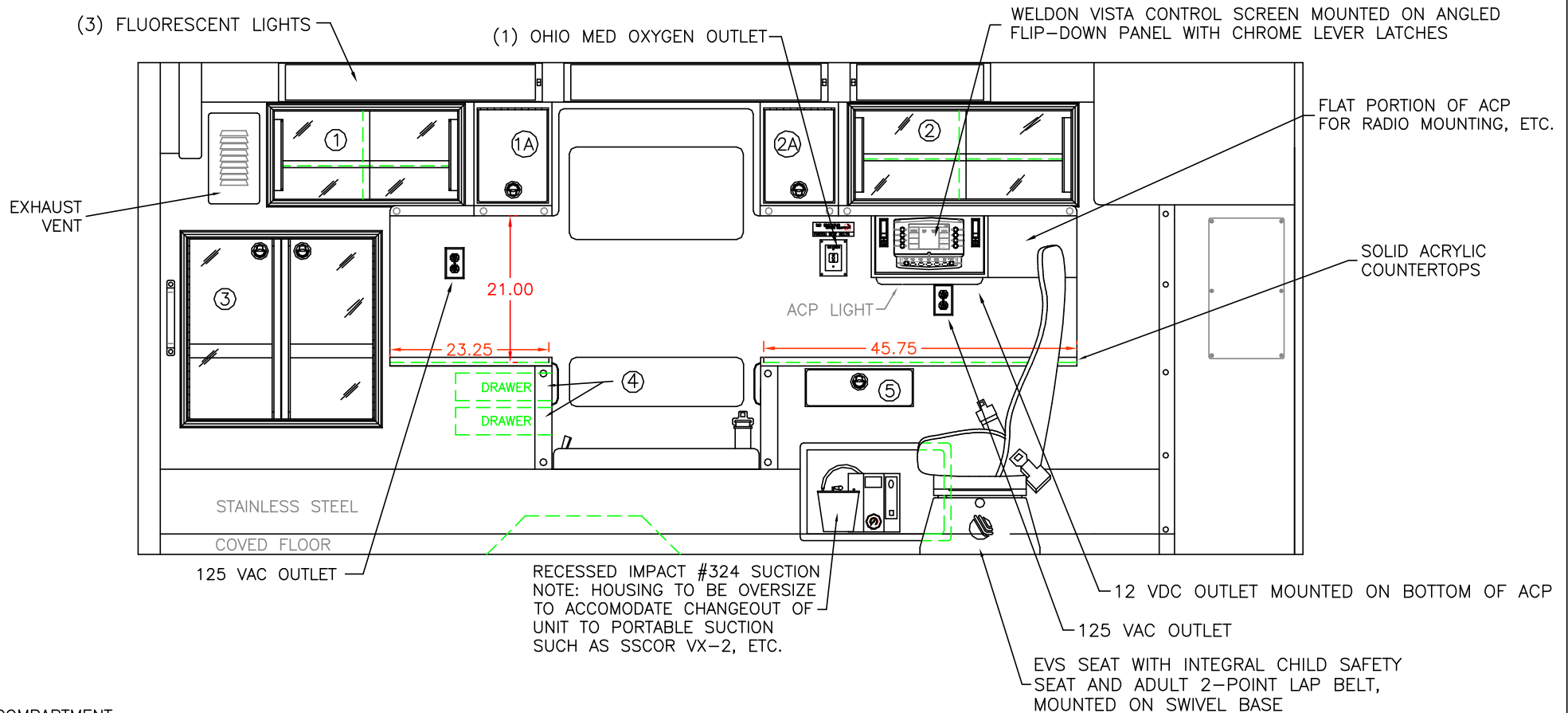


2014 CURBSIDE EXTERIOR VIEW  
 SUPER CHIEF-1/INTERNATIONAL 4300LP CHASSIS

DATE:	08 APR 13	
DWG.	GLF	REV.
		NR

DRAWING NO.	14SC4300-4
-------------	------------

1:30



COMPARTMENT

#1 DOOR OPENING: 13.00h x 26.75w  
 INSIDE DIMS: 14.75h x 28.50w x 19.50d  
 (1) ADJUSTABLE SHELF  
 SLIDING ACRYLIC CABINET DOORS

#2 DOOR OPENING: 13.00h x 31.50w  
 INSIDE DIMS: 14.75h x 33.25w x 19.50d  
 (1) ADJUSTABLE SHELF  
 SLIDING ACRYLIC CABINET DOORS

#1A & #2A ANGLED-FACE CABINETS WITH LIFT-UP DOORS  
 LOCKING STAINLESS STEEL FLUSH PULL LATCHES  
 OPENING DIMS: 13.75h x 12.00w  
 EACH DOOR TO BE DRY-ERASE BOARD WITH HOLD-OPEN

#3 DOOR OPENING: 26.50h x 27.25w  
 INSIDE DIMS: O.S.S. #3  
 RECESSED .375" ACRYLIC DOORS WITH FULL LENGTH HANDLES  
 LOCKING STAINLESS STEEL FLUSH PULL LATCHES

#4 = TWO DRAWERS THAT PULL-OUT TOWARD CPR SEAT  
 INSIDE DIMS: 3.00h x 9.75w x 13.00d  
 LOCKING STAINLESS STEEL FLUSH PULL LATCHES

#5 PULL-OUT DRAWER WITH HINGED ACRYLIC WRITING SURFACE  
 INSIDE DIMS: 4.50h x 14.50w x 13.25d  
 LOCKING STAINLESS STEEL FLUSH PULL LATCH

CABINETS TO BE ALUMINUM  
 CABINET SHELF TRACK TO BE RECESSED  
 MINIMIZE EXPOSED FASTENERS

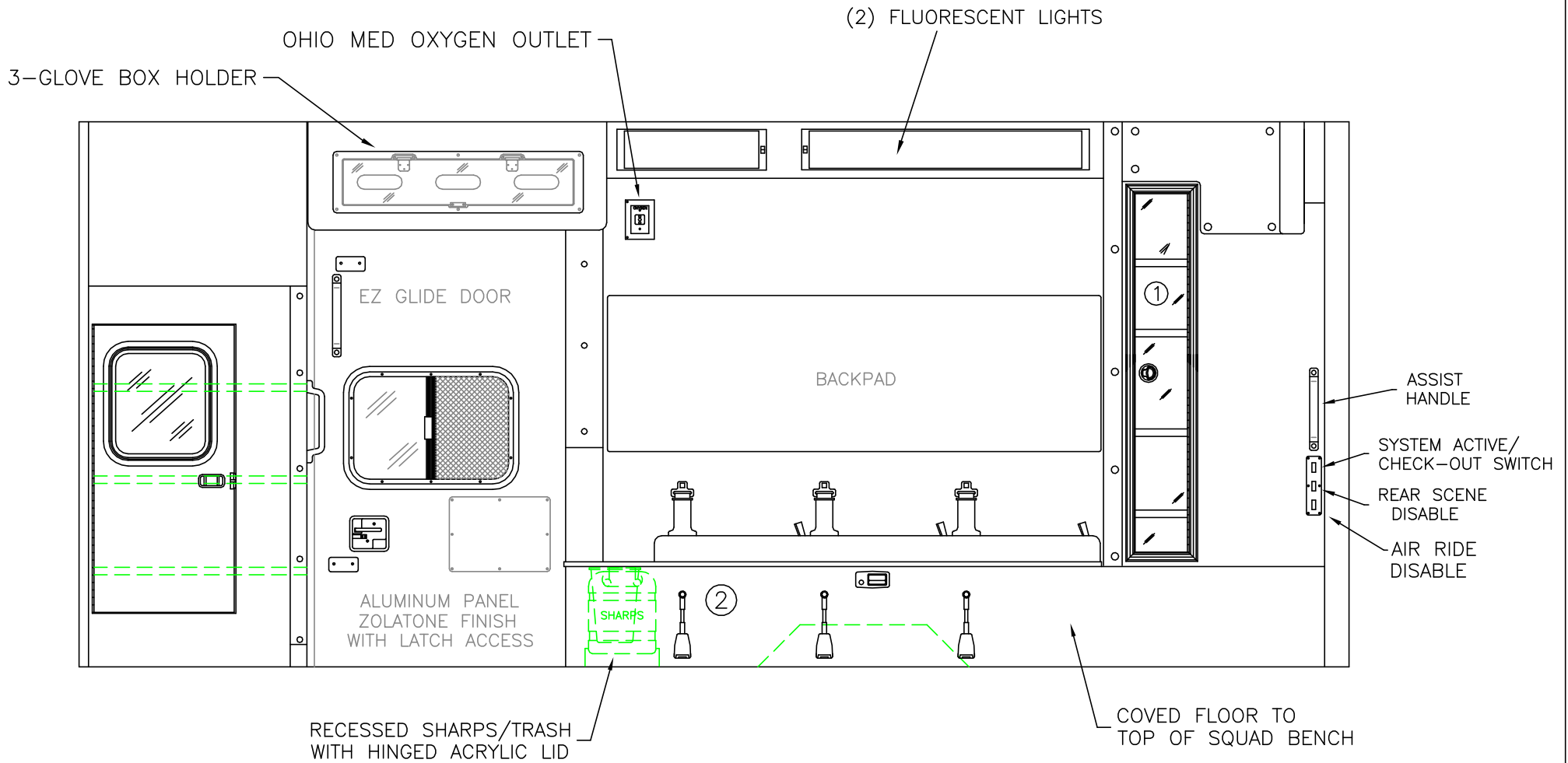
THIS DRAWING IS FOR REPRESENTATIONAL PURPOSES ONLY. DETAILS ARE CONCEPTUAL AND ARE SUBJECT TO CHANGE DURING DESIGN AND CONSTRUCTION  
 DIMENSIONS ARE APPROXIMATE UNLESS NOTED OTHERWISE TO MEET A SPECIFIC CUSTOMER NEED.



2014 STREETSIDE INTERIOR VIEW  
 SUPER CHIEF-I

DATE:	08 APR 13	DRAWING NO.	14SC4300-5
DWG.	GLF	REV.	

1:22



COMPARTMENT

- #1 DOOR OPENING: 48.00h x 7.25w
- INSIDE DIMS: 50.00h x 11.50w x 7.50d
- RECESSED .375" ACRYLIC DOOR
- (1) LOCKING STAINLESS STEEL FLUSH PULL LATCH
- (4) ADJUSTABLE SHELVES

- #2 INSIDE DIM'S: 14.25h x 72.00w x 21.00d

CABINETS TO BE ALUMINUM

CABINET SHELF TRACK TO BE RECESSED  
MINIMIZE EXPOSED FASTENERS

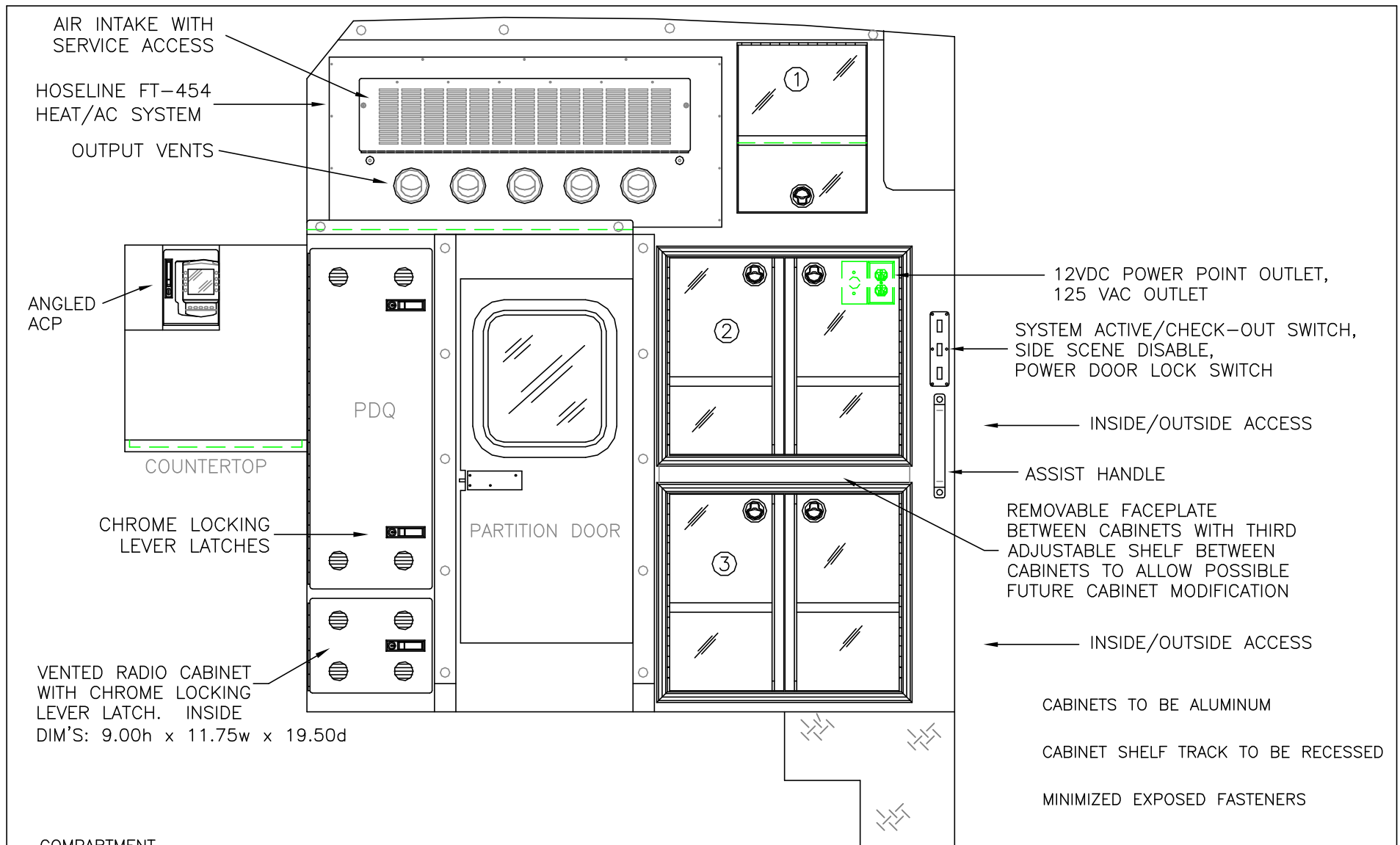
THIS DRAWING IS FOR REPRESENTATIONAL PURPOSES ONLY. DETAILS ARE CONCEPTUAL AND ARE SUBJECT TO CHANGE DURING DESIGN AND CONSTRUCTION  
DIMENSIONS ARE APPROXIMATE UNLESS NOTED OTHERWISE TO MEET A SPECIFIC CUSTOMER NEED.



2014 CURBSIDE INTERIOR VIEW  
SUPER CHIEF-I

DATE: 08 APR 13		DRAWING NO. 14SC4300-6	
DWG. GLF	REV. NR		

1:20



VENTED RADIO CABINET WITH CHROME LOCKING LEVER LATCH. INSIDE DIM'S: 9.00h x 11.75w x 19.50d

COMPARTMENT  
 #1 DOOR OPENING: 18.00h x 13.75w  
 INSIDE DIMS: 18.00h x 13.75w x 23.00d  
 LIFT UP ACRYLIC DOOR WITH HOLD-OPEN  
 (1) ADJUSTABLE SHELF  
 LOCKING STAINLESS STEEL FLUSH PULL LATCH

#2 & #3 DOOR OPENINGS: 21.00h x 24.75w  
 INSIDE DIMS: 24.75h x 31.25w x 28.00d  
 RECESSED .375" ACRYLIC DOORS WITH FULL LENGTH HANDLES  
 LOCKING STAINLESS STEEL FLUSH PULL LATCHES  
 (1) ADJUSTABLE SHELF PER COMPARTMENT  
 (1) ADJUSTABLE SHELF BETWEEN COMPARTMENTS FOR A TOTAL OF (3) SHELVES  
 REMOVABLE FACEPLATE BETWEEN #2 & #3 COMPARTMENTS  
 FOR POSSIBLE FUTURE CHANGE TO FULL-HEIGHT DOORS

CABINETS TO BE ALUMINUM  
 CABINET SHELF TRACK TO BE RECESSED  
 MINIMIZED EXPOSED FASTENERS

THIS DRAWING IS FOR REPRESENTATIONAL PURPOSES ONLY. DETAILS ARE CONCEPTUAL AND ARE SUBJECT TO CHANGE DURING DESIGN AND CONSTRUCTION DIMENSIONS ARE APPROXIMATE UNLESS NOTED OTHERWISE TO MEET A SPECIFIC CUSTOMER NEED.



2014 PARTITION INTERIOR VIEW  
 SUPER CHIEF-I

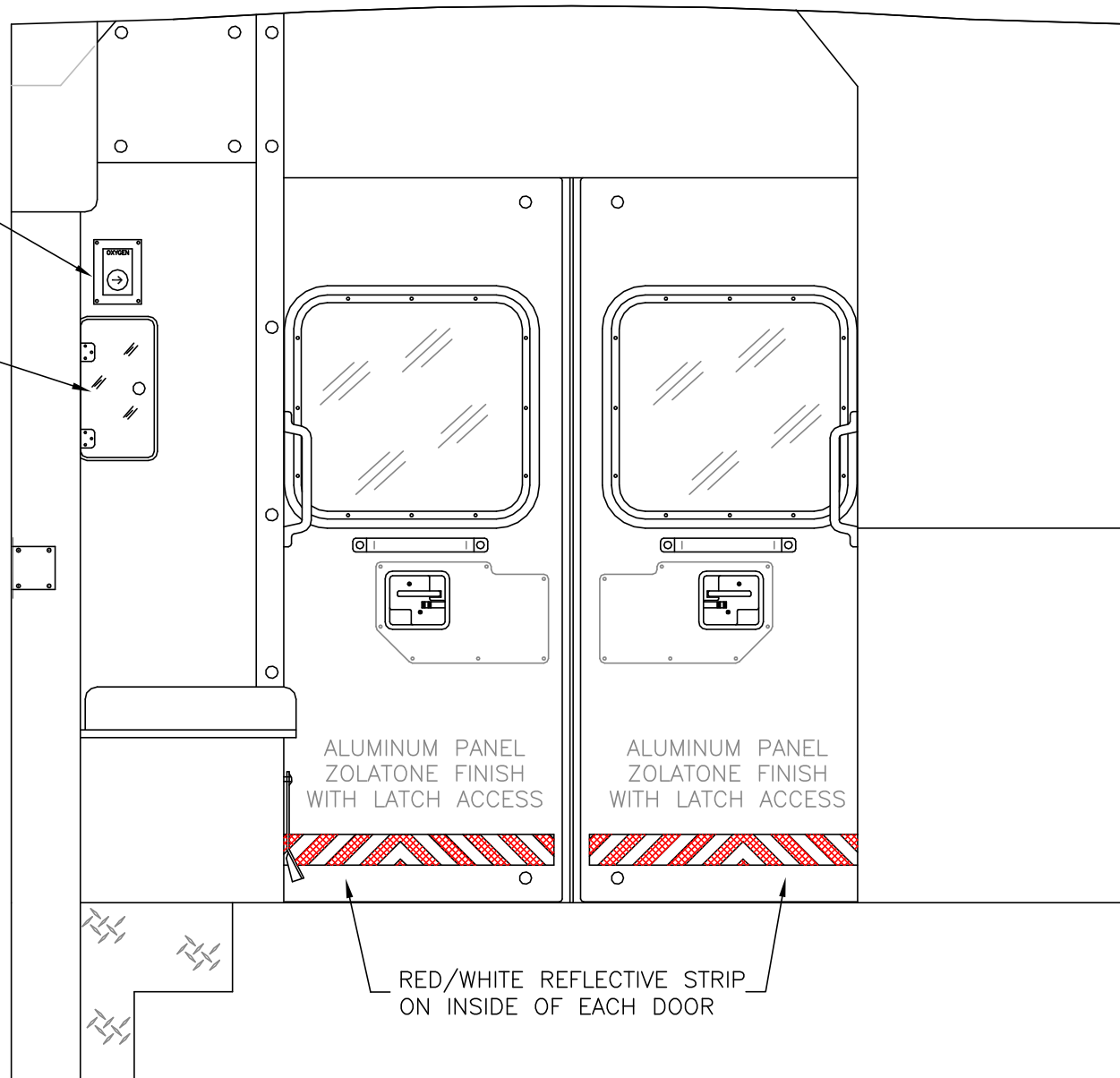
DATE:  
08 APR 13  
 DWG.  
GLF

REV.  
NR

DRAWING NO.  
14SC4300-7

OXYGEN BYPASS

OXYGEN ACCESS



ALUMINUM PANEL  
ZOLATONE FINISH  
WITH LATCH ACCESS

ALUMINUM PANEL  
ZOLATONE FINISH  
WITH LATCH ACCESS

RED/WHITE REFLECTIVE STRIP  
ON INSIDE OF EACH DOOR

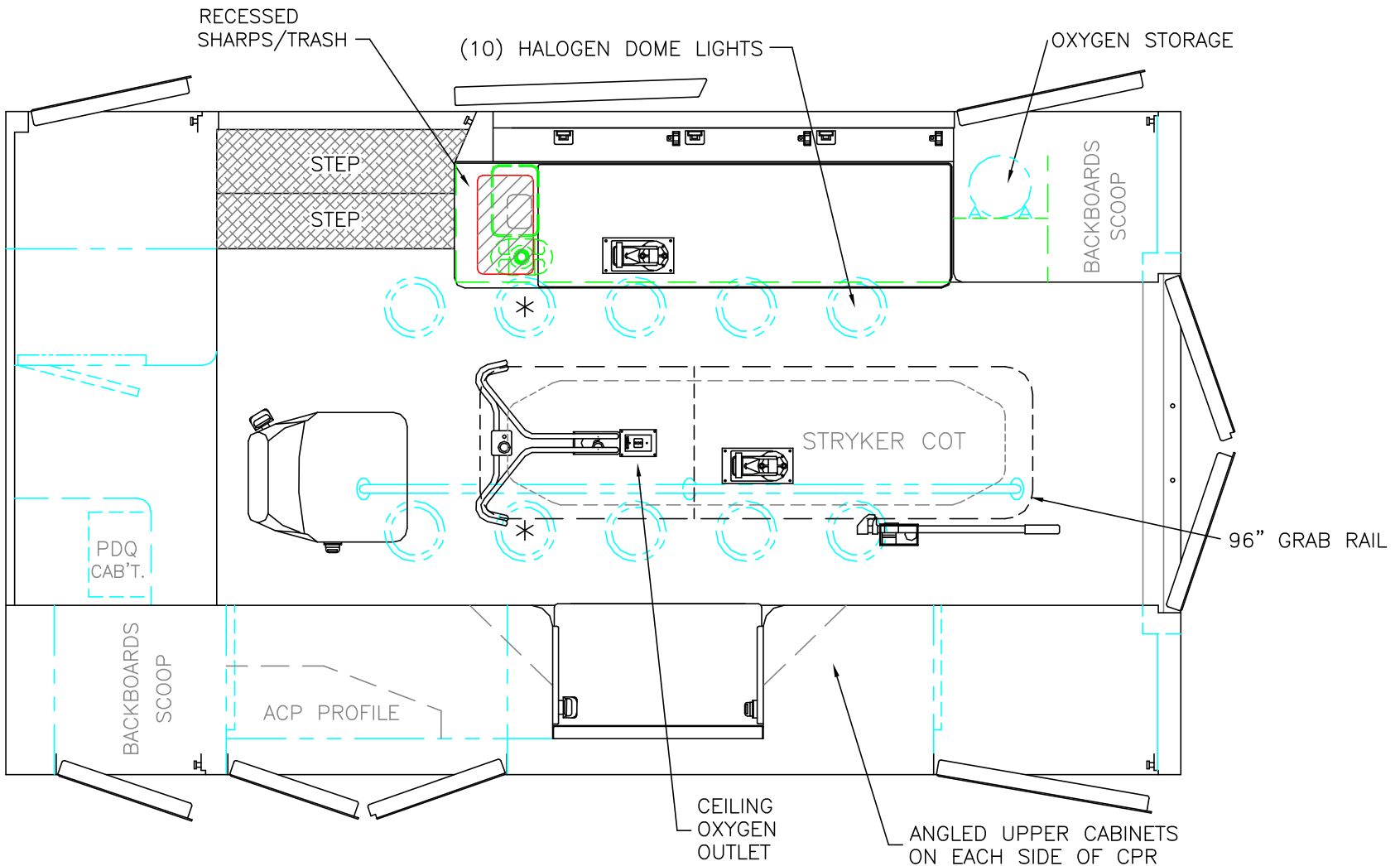
THIS DRAWING IS FOR REPRESENTATIONAL PURPOSES ONLY. DETAILS ARE CONCEPTUAL AND ARE SUBJECT TO CHANGE DURING DESIGN AND CONSTRUCTION DIMENSIONS ARE APPROXIMATE UNLESS NOTED OTHERWISE TO MEET A SPECIFIC CUSTOMER NEED.



2014 REAR INTERIOR VIEW  
SUPER CHIEF-1

DATE:	08 APR 13	DRAWING NO.
DWG.	GLF	REV. NR
1:14		14SC4300-8





 = (2) RECESSED CEILING IV HANGER LOCATIONS

\* (2) ANTENNA BASES LOCATED OUTBOARD OF DOME LIGHTS WITH COAX SERVICE LOOP

STRYKER CENTER MOUNT COT HARDWARE

MODULE WIDTH = 96"  
 MODULE LENGTH = 170"  
 MODULE HEAD ROOM = 73.5"

THIS DRAWING IS FOR REPRESENTATIONAL PURPOSES ONLY. DETAILS ARE CONCEPTUAL AND ARE SUBJECT TO CHANGE DURING DESIGN AND CONSTRUCTION DIMENSIONS ARE APPROXIMATE UNLESS NOTED OTHERWISE TO MEET A SPECIFIC CUSTOMER NEED.



2014 FLOOR INTERIOR VIEW  
 SUPER CHIEF-I

DATE: 08 APR 13		DRAWING NO. 14SC4300-9
DWG. GLF	REV. NR	

1:23