

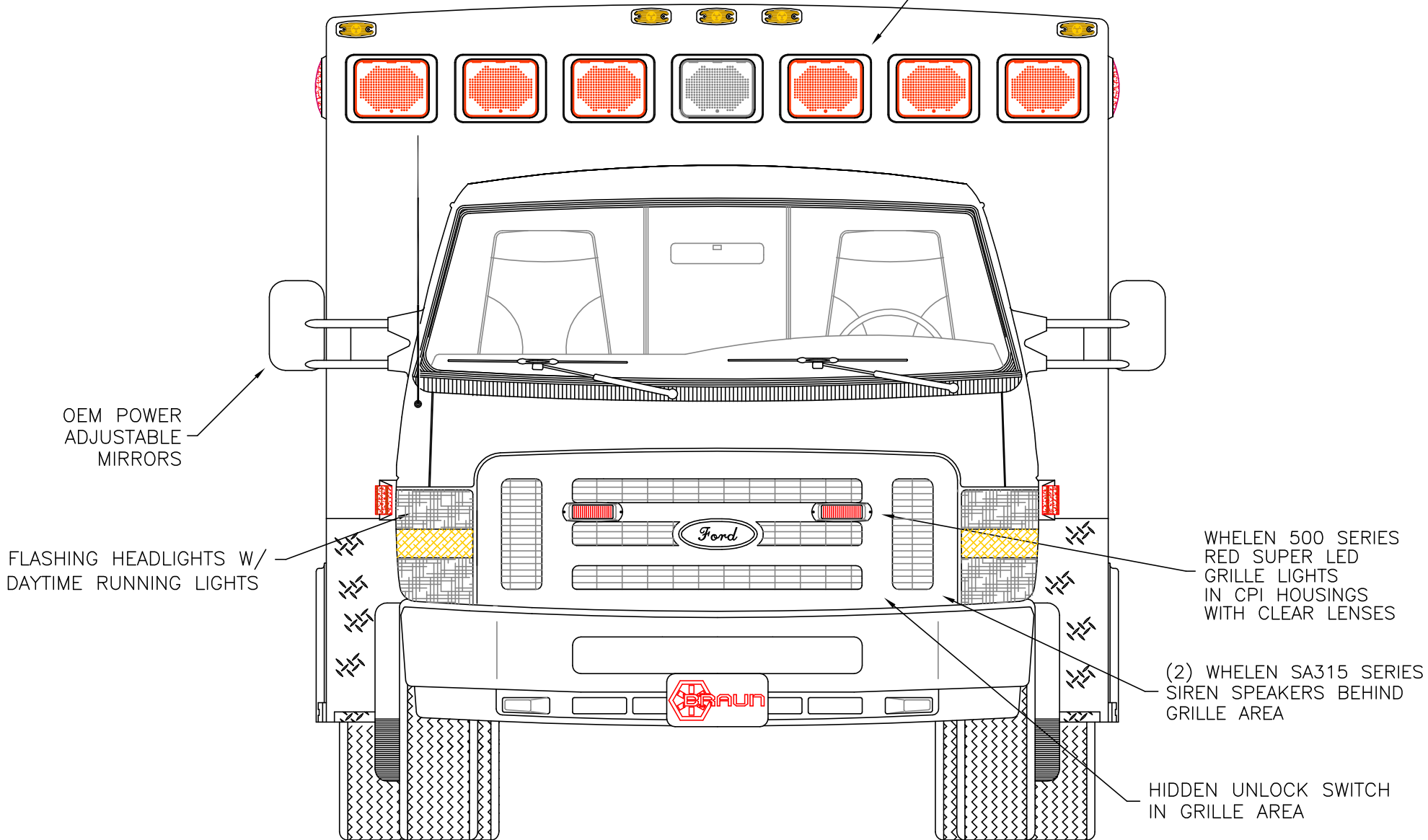
DIMENSIONS FOR OVERALL HEIGHT AND LENGTH ARE APPROXIMATE

OVERALL HEIGHT = 106.5"

OVERALL WIDTH WITH RUB

RAILS & FENDERETTES = 98"

(7) WHELEN 900 SUPER LED WARNING LIGHTS
RED/RED/RED/WHITE/RED/RED/RED
WITH CLEAR LENSES



THIS DRAWING IS FOR REPRESENTATIONAL PURPOSES ONLY. DETAILS ARE CONCEPTUAL AND ARE SUBJECT TO CHANGE DURING DESIGN AND CONSTRUCTION
DIMENSIONS ARE APPROXIMATE UNLESS NOTED OTHERWISE TO MEET A SPECIFIC CUSTOMER NEED.



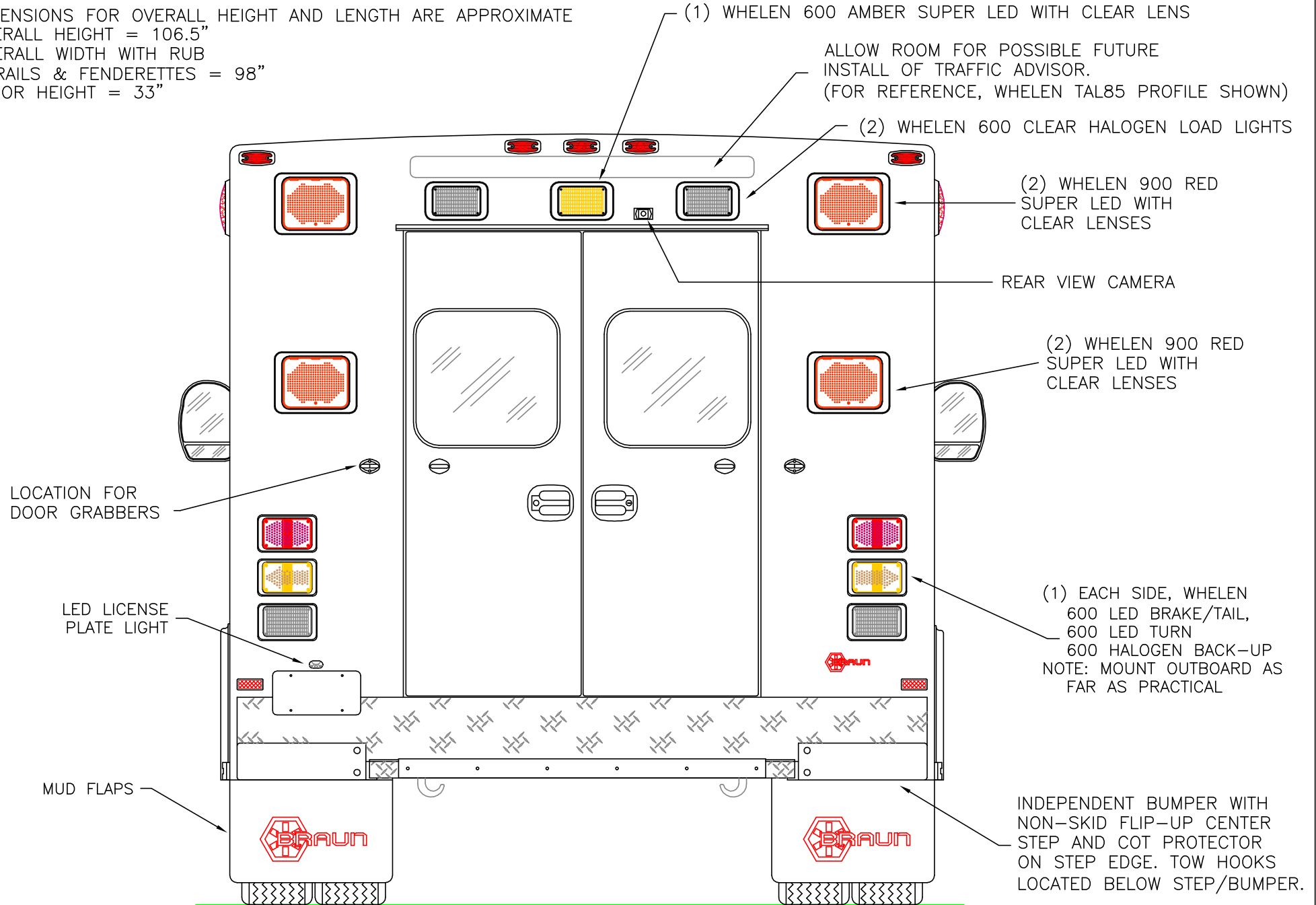
2014 FRONT EXTERIOR VIEW
CHIEF XL-III/FORD E-450 CHASSIS-GAS ENGINE

1:17

DATE:
08 APR 13
DWG. GLF
REV. NR

DRAWING NO.
14XLE450-1

DIMENSIONS FOR OVERALL HEIGHT AND LENGTH ARE APPROXIMATE
 OVERALL HEIGHT = 106.5"
 OVERALL WIDTH WITH RUB
 RAILS & FENDERETTES = 98"
 FLOOR HEIGHT = 33"



THIS DRAWING IS FOR REPRESENTATIONAL PURPOSES ONLY. DETAILS ARE CONCEPTUAL AND ARE SUBJECT TO CHANGE DURING DESIGN AND CONSTRUCTION
 DIMENSIONS ARE APPROXIMATE UNLESS NOTED OTHERWISE TO MEET A SPECIFIC CUSTOMER NEED.



2014 REAR EXTERIOR VIEW
 CHIEF XL-III/FORD E-450 CHASSIS

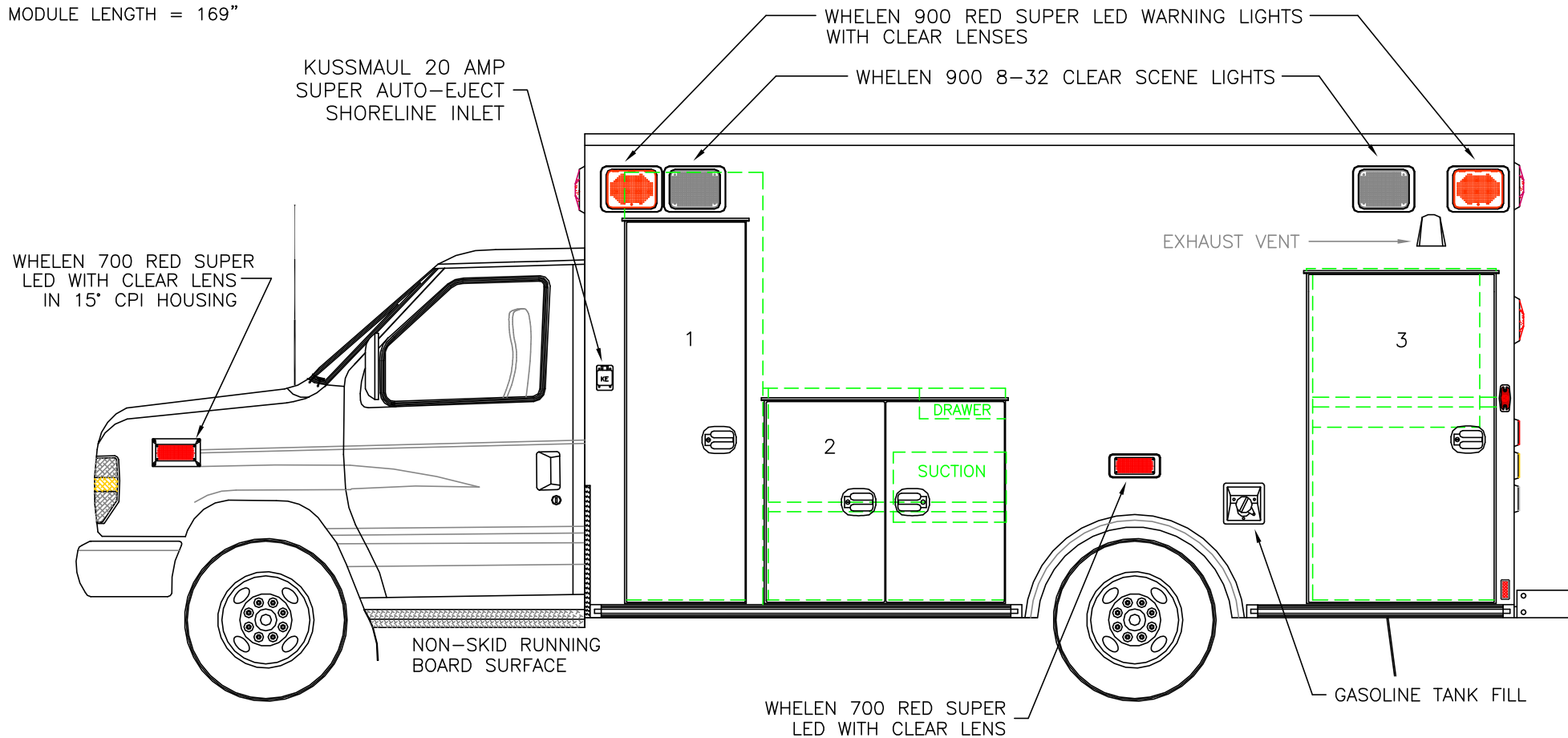
DATE:		DRAWING NO.	
08	APR	13	
DWG.	REV.	14XLE450-2	
GLF	NR		

DIMENSIONS FOR OVERALL HEIGHT AND LENGTH ARE APPROXIMATE

OVERALL HEIGHT = 106.5"

OVERALL LENGTH = 272.75"

MODULE LENGTH = 169"



COMPARTMENT

O.S.S #1

CLEAR OPENING: 68.00h x 18.25w
 INSIDE DIM'S.: 77.75h x 24.25w x 20.75d
 BACKBOARD/SCOOP STORAGE

O.S.S #2

CLEAR OPENING: 35.50h x 38.50w
 INSIDE DIM'S.: 38.50h x 43.00w x 20.75d
 (1) ADJUSTABLE SHELF

O.S.S #3

CLEAR OPENING: 58.50h x 30.75w
 INSIDE DIM'S.: 60.25h x 33.25w x 20.75d
 INSIDE/OUTSIDE ACCESS
 (1) ADJUSTABLE SHELF

COMPARTMENTS WITH ADJUSTABLE SHELVES HAVE
 RECESSED UNISTRUT SHELF TRACK

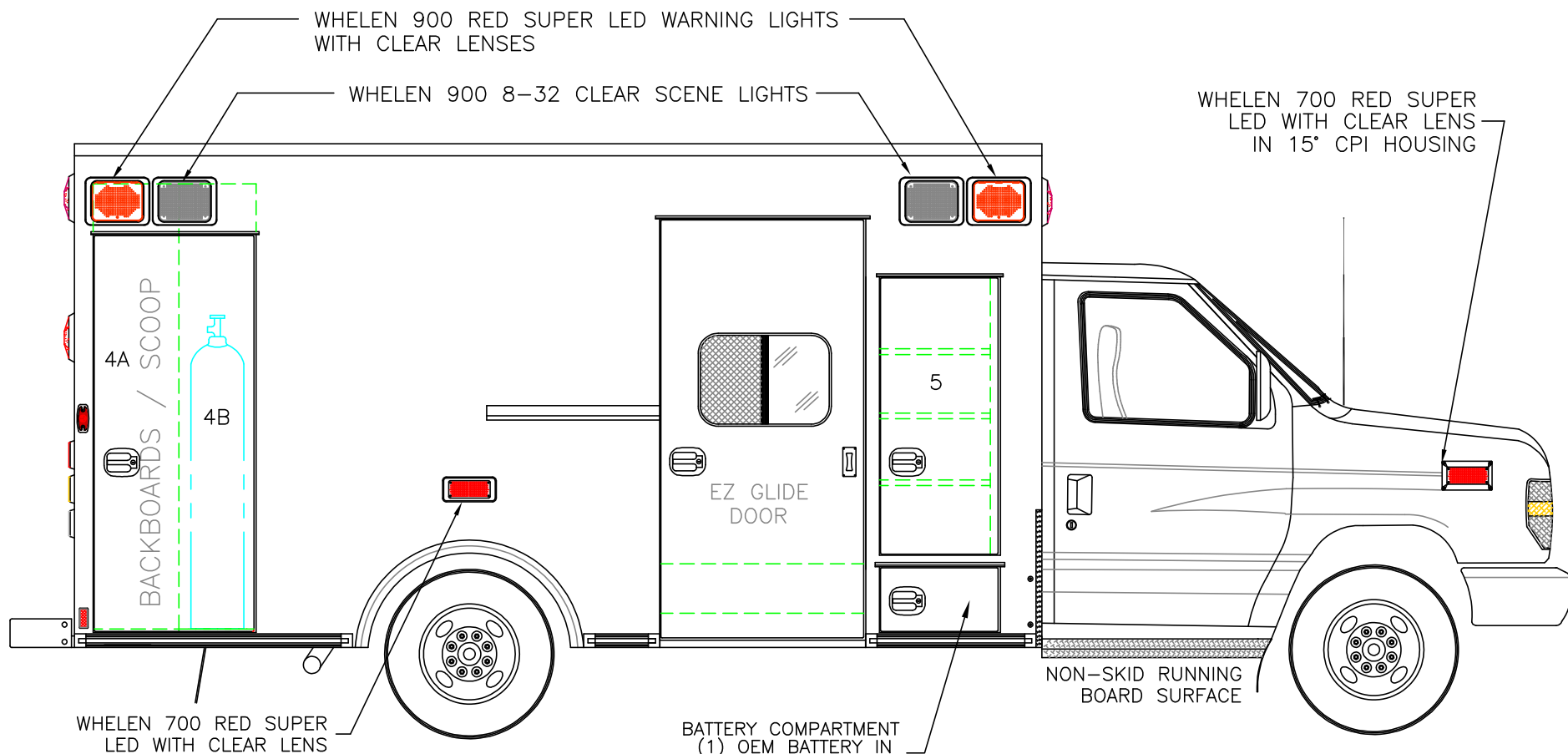
THIS DRAWING IS FOR REPRESENTATIONAL PURPOSES ONLY. DETAILS ARE CONCEPTUAL AND ARE SUBJECT TO CHANGE DURING DESIGN AND CONSTRUCTION
 DIMENSIONS ARE APPROXIMATE UNLESS NOTED OTHERWISE TO MEET A SPECIFIC CUSTOMER NEED.



2014 STREETSIDE EXTERIOR VIEW
 CHIEF XL-III/FORD E-450 CHASSIS

DATE:	08 APR 13		DRAWING NO.
DWG.	GLF	REV.	NR
1:28			14XLE450-3

DIMENSIONS FOR OVERALL HEIGHT AND LENGTH ARE APPROXIMATE
 OVERALL HEIGHT = 106.5"
 OVERALL LENGTH = 272.75"
 MODULE LENGTH = 169"



COMPARTMENT
 O.S.S #4

CLEAR OPENING: 68.00h x 24.75w
 INSIDE DIM'S. 4A: 77.75h x 15.00w x 20.75d
 BACKBOARD/SCOOP STORAGE

INSIDE DIM'S. 4B: 77.75h x 13.50w x 12.00d
 MAIN OXYGEN STORAGE

BATTERY COMPARTMENT
 (1) OEM BATTERY IN
 SLIDE-OUT TRAY,
 (1) UNDER HOOD

O.S.S #5

CLEAR OPENING: 46.75h x 17.25w
 INSIDE DIM'S. 5: SEE PARTITION INTERIOR VIEW
 INSIDE/OUTSIDE ACCESS WITH (3) ADJUSTABLE SHELVES

COMPARTMENTS WITH ADJUSTABLE SHELVES HAVE
 RECESSED UNISTRUT SHELF TRACK

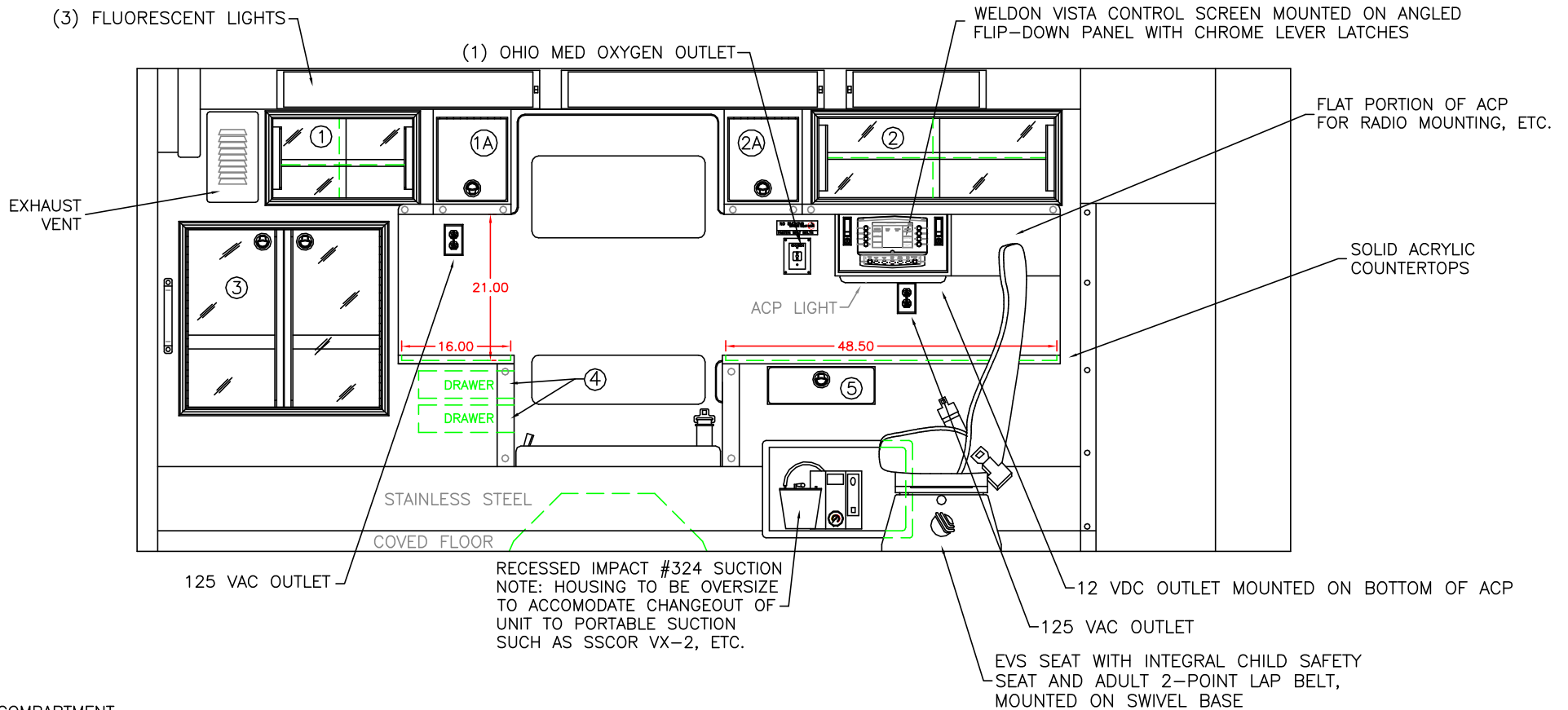
THIS DRAWING IS FOR REPRESENTATIONAL PURPOSES ONLY. DETAILS ARE CONCEPTUAL AND ARE SUBJECT TO CHANGE DURING DESIGN AND CONSTRUCTION
 DIMENSIONS ARE APPROXIMATE UNLESS NOTED OTHERWISE TO MEET A SPECIFIC CUSTOMER NEED.



2014 CURBSIDE EXTERIOR VIEW
 CHIEF XL-III/FORD E-450 CHASSIS

DATE:	08 APR 13	DRAWING NO.	14XLE450-4
DWG.	GLF	REV.	

1:28



COMPARTMENT

#1 DOOR OPENING: 11.50h x 20.50w
 INSIDE DIMS: 13.25h x 22.25w x 17.25d
 (1) ADJUSTABLE SHELF
 SLIDING ACRYLIC CABINET DOORS

#2 DOOR OPENING: 11.50h x 34.50w
 INSIDE DIMS: 13.25h x 36.25w x 17.25d
 (1) ADJUSTABLE SHELF
 SLIDING ACRYLIC CABINET DOORS

#1A & #2A ANGLED-FACE CABINETS WITH LIFT-UP DOORS
 LOCKING STAINLESS STEEL FLUSH PULL LATCHES
 OPENING DIMS: 12.25h x 12.00w
 EACH DOOR TO BE DRY-ERASE BOARD WITH HOLD-OPEN

#3 DOOR OPENING: 26.25h x 28.50w
 INSIDE DIMS: O.S.S. #3
 RECESSED .375" ACRYLIC DOORS WITH FULL LENGTH HANDLES
 LOCKING STAINLESS STEEL FLUSH PULL LATCHES

#4 = TWO DRAWERS THAT PULL-OUT TOWARD CPR SEAT
 INSIDE DIMS: 3.00h x 9.75w x 13.00d
 LOCKING STAINLESS STEEL FLUSH PULL LATCHES

#5 PULL-OUT DRAWER WITH HINGED ACRYLIC WRITING SURFACE
 INSIDE DIMS: 4.50h x 14.50w x 13.25d
 LOCKING STAINLESS STEEL FLUSH PULL LATCH

CABINETS TO BE ALUMINUM

CABINET SHELF TRACK TO BE RECESSED

MINIMIZE EXPOSED FASTENERS

THIS DRAWING IS FOR REPRESENTATIONAL PURPOSES ONLY. DETAILS ARE CONCEPTUAL AND ARE SUBJECT TO CHANGE DURING DESIGN AND CONSTRUCTION
 DIMENSIONS ARE APPROXIMATE UNLESS NOTED OTHERWISE TO MEET A SPECIFIC CUSTOMER NEED.

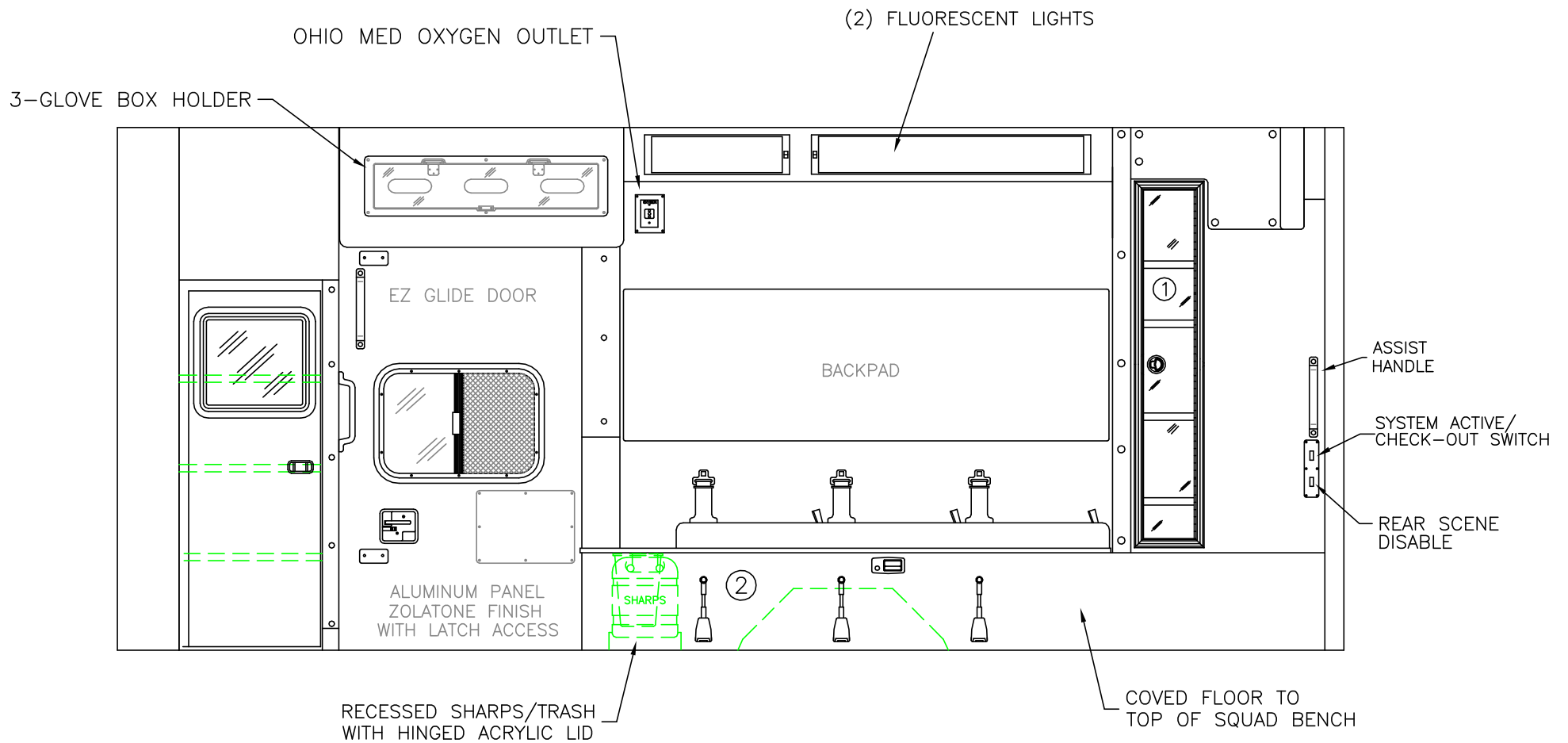


2014 STREETSIDE INTERIOR VIEW
 CHIEF XL-III

1:22

DATE:	08 APR 13
DWG.	REV.
GLF	NR

DRAWING NO.	14XLE450-5
-------------	------------



COMPARTMENT

- #1 DOOR OPENING: 48.00h x 7.25w
- INSIDE DIMS: 50.00h x 11.50w x 7.50d
- RECESSED .375" ACRYLIC DOOR
- (1) LOCKING STAINLESS STEEL FLUSH PULL LATCH
- (4) ADJUSTABLE SHELVES

#2 INSIDE DIM'S: 14.25h x 72.00w x 21.00d

CABINETS TO BE ALUMINUM

CABINET SHELF TRACK TO BE RECESSED

MINIMIZE EXPOSED FASTENERS

THIS DRAWING IS FOR REPRESENTATIONAL PURPOSES ONLY. DETAILS ARE CONCEPTUAL AND ARE SUBJECT TO CHANGE DURING DESIGN AND CONSTRUCTION
 DIMENSIONS ARE APPROXIMATE UNLESS NOTED OTHERWISE TO MEET A SPECIFIC CUSTOMER NEED.

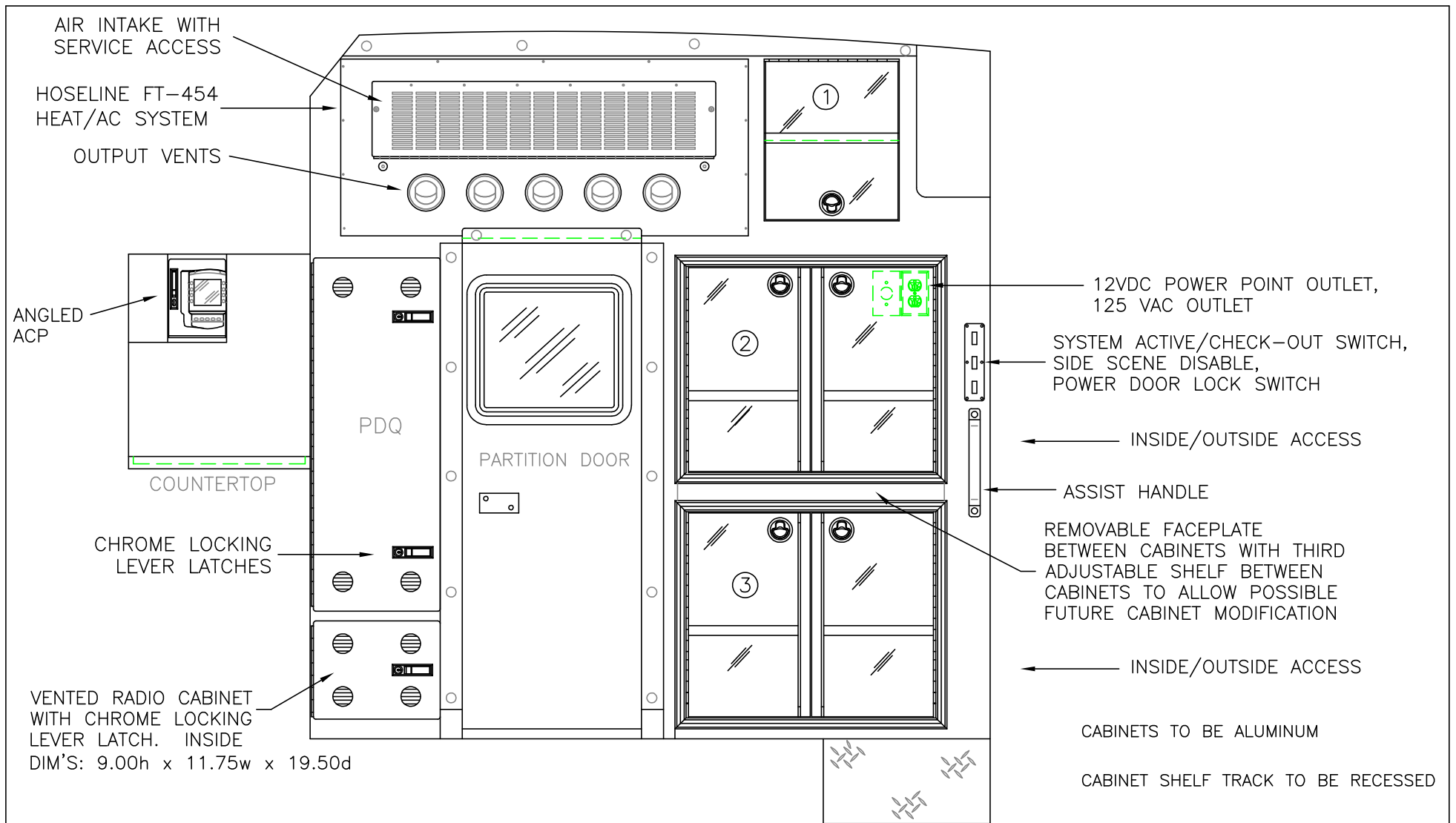


2014 CURBSIDE INTERIOR VIEW
 CHIEF XL-III

1:20

DATE:	08 APR 13
DWG.:	GLF
REV.:	NR

DRAWING NO.
 14XLE450-6



ANGLED ACP

AIR INTAKE WITH SERVICE ACCESS
 HOSELINE FT-454 HEAT/AC SYSTEM
 OUTPUT VENTS

COUNTERTOP

PDQ

PARTITION DOOR

CHROME LOCKING LEVER LATCHES

VENTED RADIO CABINET WITH CHROME LOCKING LEVER LATCH. INSIDE
 DIM'S: 9.00h x 11.75w x 19.50d

12VDC POWER POINT OUTLET, 125 VAC OUTLET

SYSTEM ACTIVE/CHECK-OUT SWITCH, SIDE SCENE DISABLE, POWER DOOR LOCK SWITCH

INSIDE/OUTSIDE ACCESS

ASSIST HANDLE

REMOVABLE FACEPLATE BETWEEN CABINETS WITH THIRD ADJUSTABLE SHELF BETWEEN CABINETS TO ALLOW POSSIBLE FUTURE CABINET MODIFICATION

INSIDE/OUTSIDE ACCESS

CABINETS TO BE ALUMINUM

CABINET SHELF TRACK TO BE RECESSED

MINIMIZED EXPOSED FASTENERS

COMPARTMENT

#1 DOOR OPENING: 16.50h x 13.75w
 INSIDE DIMS: 16.50h x 13.75w x 19.00d
 LIFT UP ACRYLIC DOOR WITH HOLD-OPEN
 (1) ADJUSTABLE SHELF
 LOCKING STAINLESS STEEL FLUSH PULL LATCH

#2 & #3 DOOR OPENINGS: 21.00h x 25.25w
 INSIDE DIMS: 24.75h x 31.50w x 20.75d
 RECESSED .375" ACRYLIC DOORS WITH FULL LENGTH HANDLES
 LOCKING STAINLESS STEEL FLUSH PULL LATCHES
 (1) ADJUSTABLE SHELF PER COMPARTMENT
 (1) ADJUSTABLE SHELF BETWEEN COMPARTMENTS FOR A TOTAL OF (3) SHELVES
 REMOVABLE FACEPLATE BETWEEN #2 & #3 COMPARTMENTS
 FOR POSSIBLE FUTURE CHANGE TO FULL-HEIGHT DOORS

THIS DRAWING IS FOR REPRESENTATIONAL PURPOSES ONLY. DETAILS ARE CONCEPTUAL AND ARE SUBJECT TO CHANGE DURING DESIGN AND CONSTRUCTION DIMENSIONS ARE APPROXIMATE UNLESS NOTED OTHERWISE TO MEET A SPECIFIC CUSTOMER NEED.

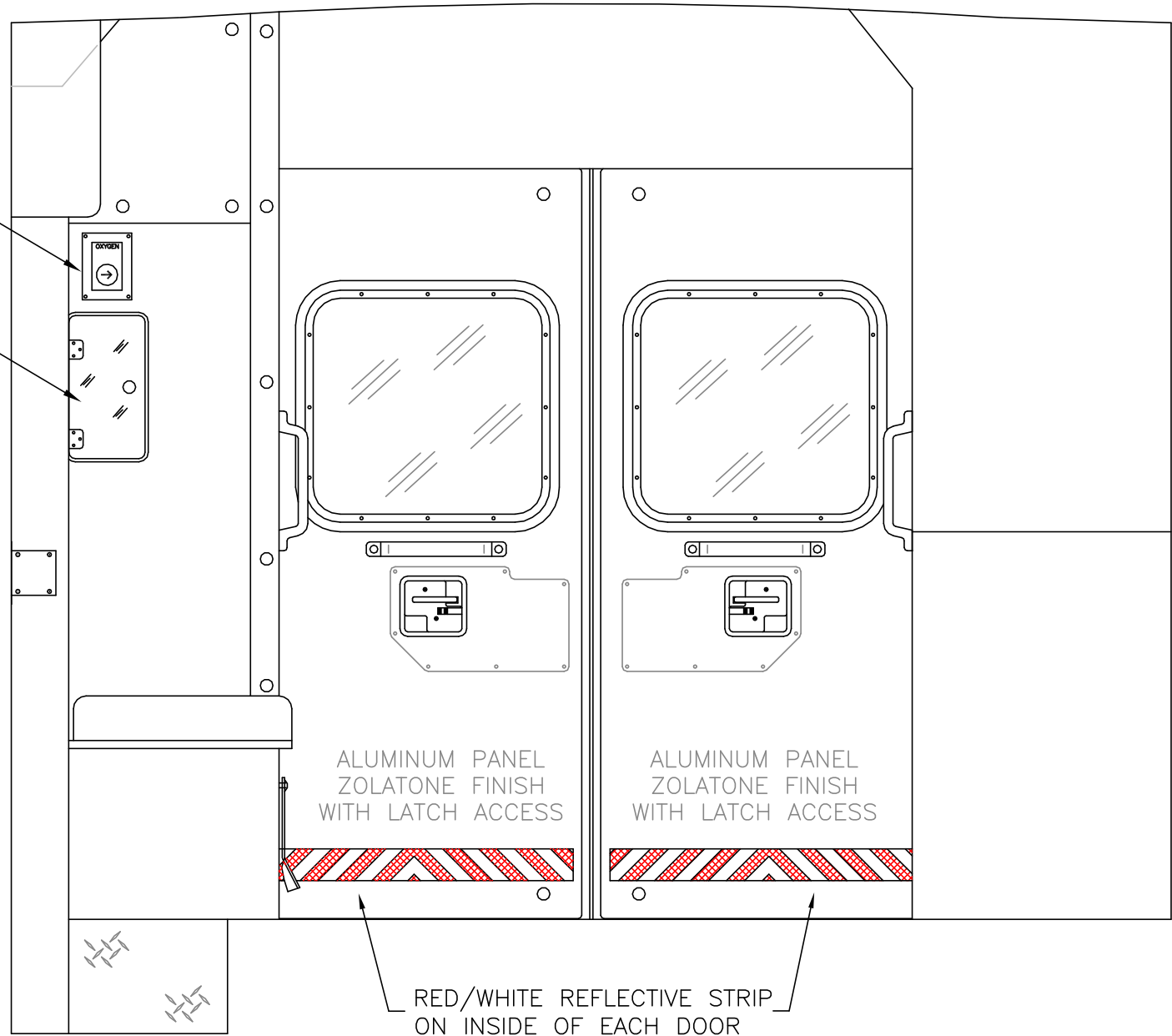


2014 PARTITION INTERIOR VIEW
 CHIEF XL-III

DATE:		DRAWING NO.	
08 APR 13		14XLE450-7	
DWG.	REV.		
GLF	NR		

OXYGEN BYPASS

OXYGEN ACCESS

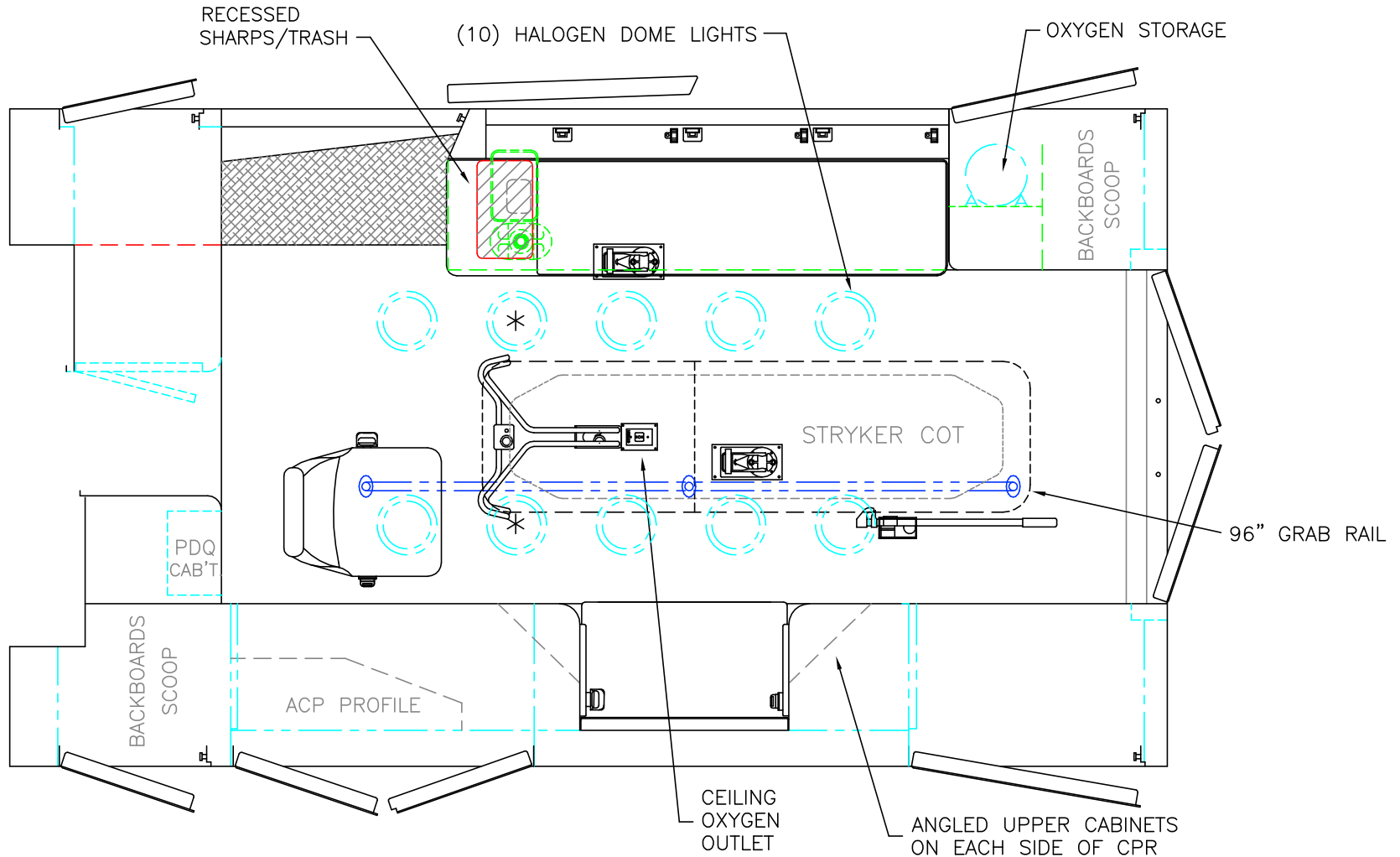


THIS DRAWING IS FOR REPRESENTATIONAL PURPOSES ONLY. DETAILS ARE CONCEPTUAL AND ARE SUBJECT TO CHANGE DURING DESIGN AND CONSTRUCTION DIMENSIONS ARE APPROXIMATE UNLESS NOTED OTHERWISE TO MEET A SPECIFIC CUSTOMER NEED.



2014 REAR INTERIOR VIEW
CHIEF XL-III

DATE:	08 APR 13	DRAWING NO.	14XLE450-8	
DWG.	GLF	REV.		NR
1:12				



 = (2) RECESSED CEILING IV HANGER LOCATIONS

* (2) ANTENNA BASES LOCATED OUTBOARD OF DOME LIGHTS WITH COAX SERVICE LOOP

STRYKER CENTER MOUNT COT HARDWARE

MODULE WIDTH = 96"
 MODULE LENGTH = 169"
 MODULE HEAD ROOM = 72"

THIS DRAWING IS FOR REPRESENTATIONAL PURPOSES ONLY. DETAILS ARE CONCEPTUAL AND ARE SUBJECT TO CHANGE DURING DESIGN AND CONSTRUCTION DIMENSIONS ARE APPROXIMATE UNLESS NOTED OTHERWISE TO MEET A SPECIFIC CUSTOMER NEED.



2014 FLOOR INTERIOR VIEW
 CHIEF XL-III

1:22

DATE:	08 APR 13
DWG.	GLF
REV.	NR

DRAWING NO.	14XLE450-9
-------------	------------