

DIMENSIONS FOR OVERALL HEIGHT AND LENGTH ARE APPROXIMATE  
 OVERALL HEIGHT = 110"  
 OVERALL WIDTH WITH RUB  
 RAILS & FENDERETTES = 98"

(7) WHELEN 900 SUPER LED WARNING LIGHTS  
 RED/RED/RED/WHITE/RED/RED/RED  
 WITH CLEAR LENSES

OEM POWER  
 ADJUSTABLE  
 MIRRORS

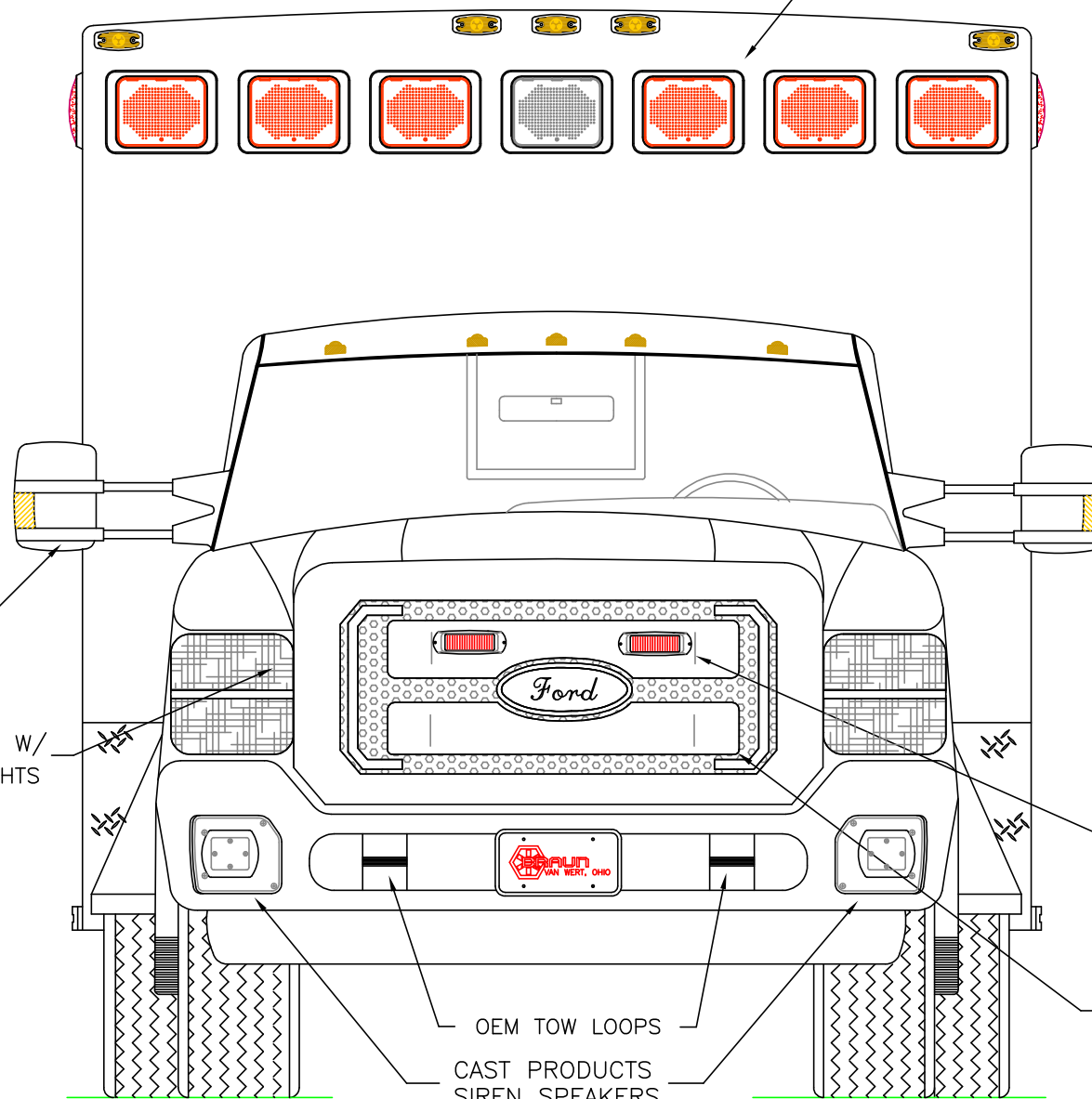
FLASHING HEADLIGHTS W/  
 DAYTIME RUNNING LIGHTS

(2) WHELEN 500 SERIES  
 RED SUPER LED  
 GRILLE LIGHTS  
 WITH CLEAR LENSES

HIDDEN UNLOCK SWITCH  
 IN GRILLE AREA

OEM TOW LOOPS

CAST PRODUCTS  
 SIREN SPEAKERS



THIS DRAWING IS FOR REPRESENTATIONAL PURPOSES ONLY. DETAILS ARE CONCEPTUAL AND ARE SUBJECT TO CHANGE DURING DESIGN AND CONSTRUCTION  
 DIMENSIONS ARE APPROXIMATE UNLESS NOTED OTHERWISE TO MEET A SPECIFIC CUSTOMER NEED.

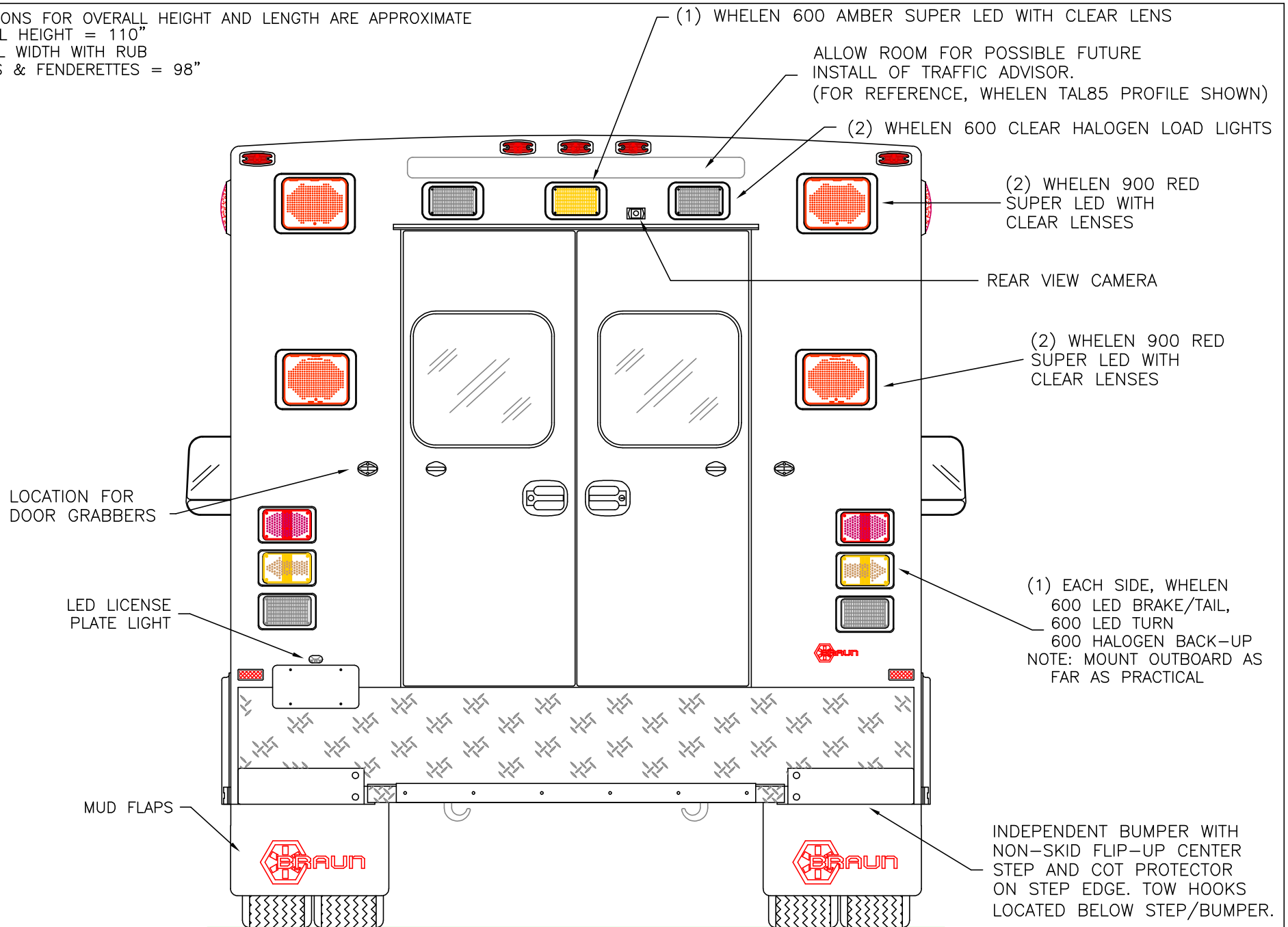


2014 FRONT EXTERIOR VIEW  
 CHIEF XL-1/FORD F-450 CHASSIS

DATE:		DRAWING NO.	
08 APR 13		14XLF450-1	
DWG.	REV.		
GLF	NR		

1:17

DIMENSIONS FOR OVERALL HEIGHT AND LENGTH ARE APPROXIMATE  
 OVERALL HEIGHT = 110"  
 OVERALL WIDTH WITH RUB  
 RAILS & FENDERETTES = 98"



THIS DRAWING IS FOR REPRESENTATIONAL PURPOSES ONLY. DETAILS ARE CONCEPTUAL AND ARE SUBJECT TO CHANGE DURING DESIGN AND CONSTRUCTION  
 DIMENSIONS ARE APPROXIMATE UNLESS NOTED OTHERWISE TO MEET A SPECIFIC CUSTOMER NEED.



2014 REAR EXTERIOR VIEW  
 CHIEF XL-1/FORD F-450 CHASSIS

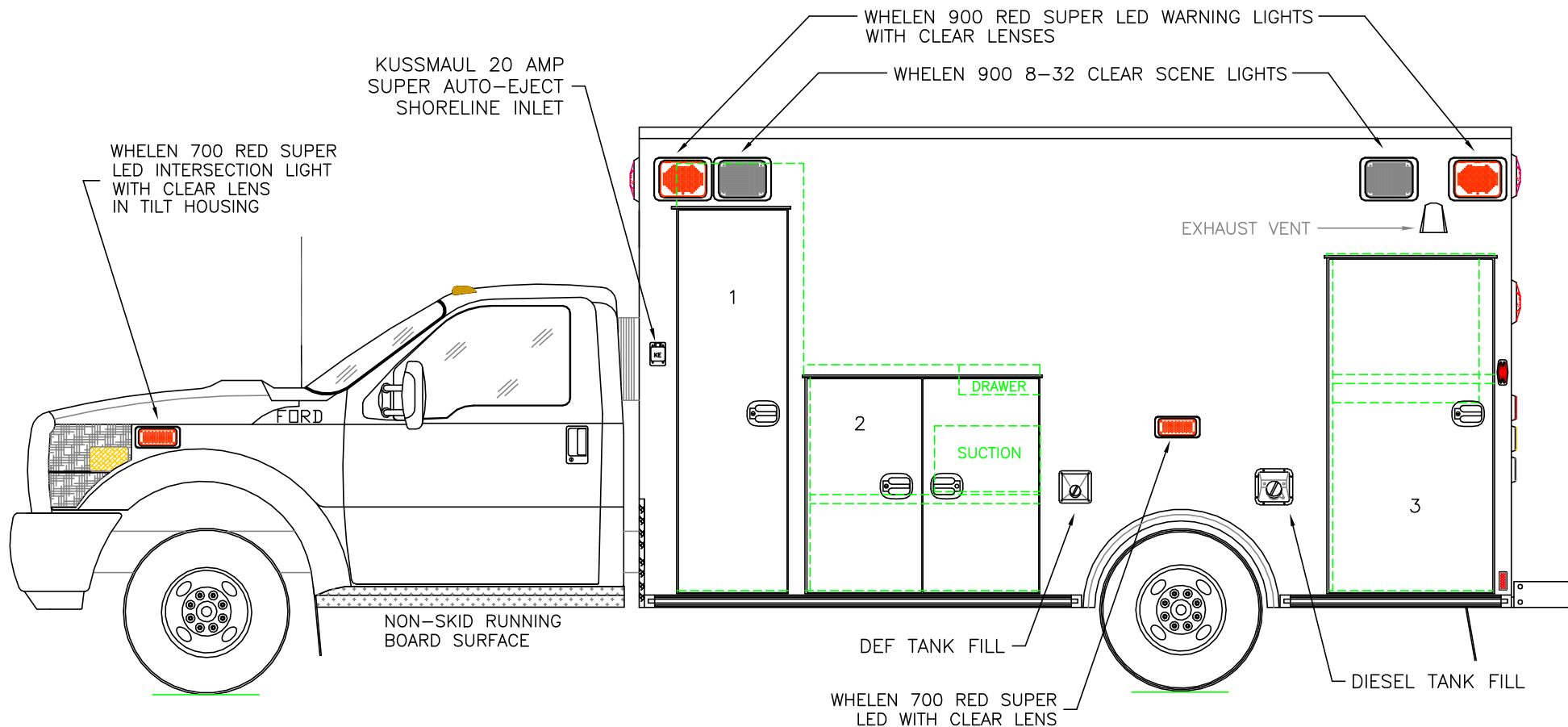
DATE:  
 08 APR 13  
 DWG. REV.  
 GLF NR

DRAWING NO.

14XLF450-2

1:16

DIMENSIONS FOR OVERALL HEIGHT AND LENGTH ARE APPROXIMATE  
 OVERALL HEIGHT = 110"  
 OVERALL LENGTH = 301.5"  
 MODULE LENGTH = 169"



COMPARTMENT

O.S.S #1

CLEAR OPENING: 73.00h x 18.25w  
 INSIDE DIM'S.: 82.75h x 24.50w x 20.75d  
 BACKBOARD/SCOOP STORAGE

O.S.S #2

CLEAR OPENING: 40.25h x 39.50w  
 INSIDE DIM'S.: 43.75h x 44.50w x 20.75d  
 (1) ADJUSTABLE SHELF

O.S.S #3

CLEAR OPENING: 63.50h x 28.75w  
 INSIDE DIM'S.: 65.25h x 31.25w x 20.75d  
 INSIDE/OUTSIDE ACCESS  
 (1) ADJUSTABLE SHELF

COMPARTMENTS WITH ADJUSTABLE SHELVES HAVE RECESSED UNISTRUT SHELF TRACK

THIS DRAWING IS FOR REPRESENTATIONAL PURPOSES ONLY. DETAILS ARE CONCEPTUAL AND ARE SUBJECT TO CHANGE DURING DESIGN AND CONSTRUCTION  
 DIMENSIONS ARE APPROXIMATE UNLESS NOTED OTHERWISE TO MEET A SPECIFIC CUSTOMER NEED.



2014 STREETSIDE EXTERIOR VIEW  
 CHIEF XL-1/FORD F-450 CHASSIS

DATE:  
08 APR 13  
 DWG. GLF  
 REV. NR

DRAWING NO.  
14XLF450-3

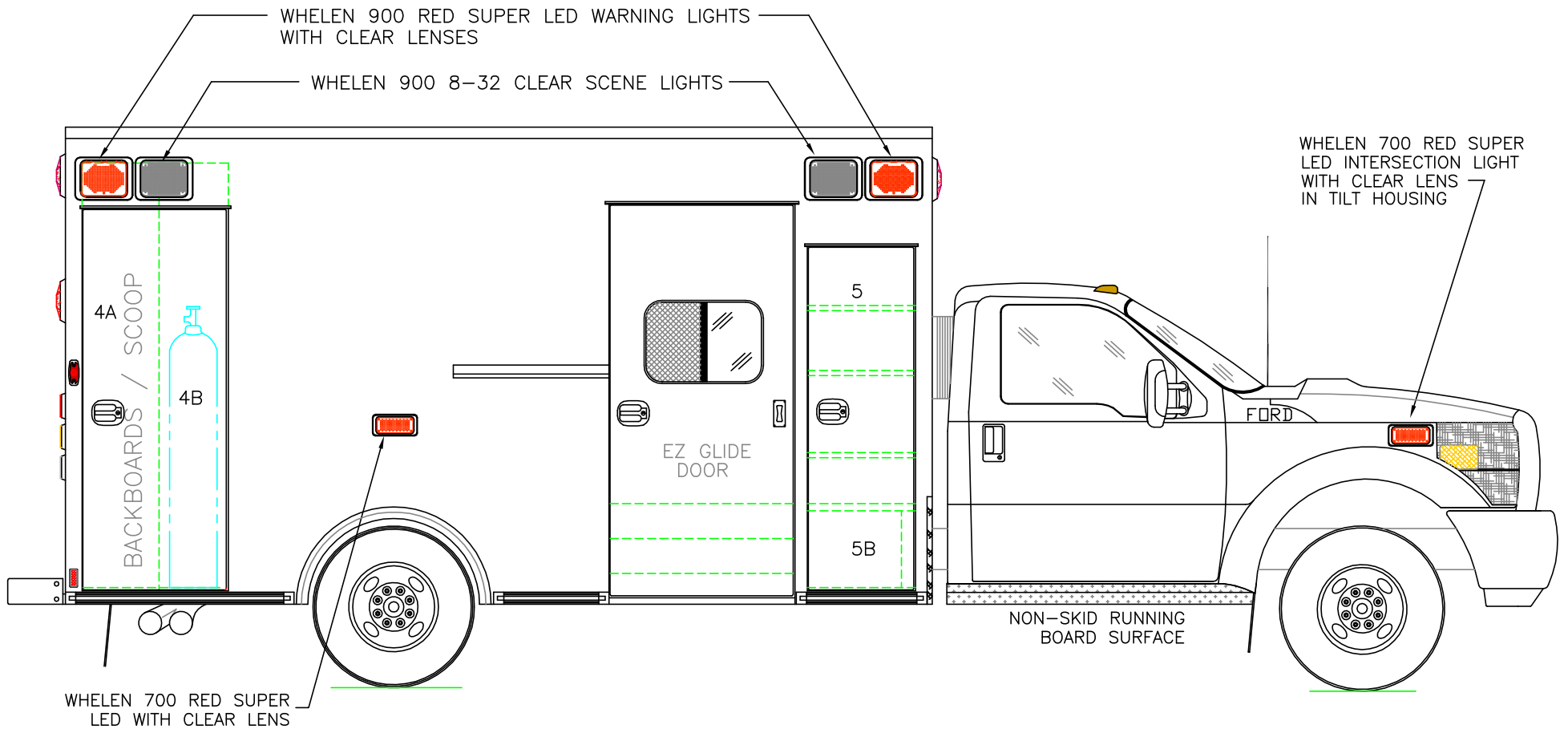
1:30

DIMENSIONS FOR OVERALL HEIGHT AND LENGTH ARE APPROXIMATE

OVERALL HEIGHT = 110"

OVERALL LENGTH = 301.5"

MODULE LENGTH = 169"



COMPARTMENT

O.S.S #4

CLEAR OPENING: 73.00h x 24.75w  
 INSIDE DIM'S. 4A: 82.75h x 15.00w x 20.75d  
 BACKBOARD/SCOOP STORAGE

INSIDE DIM'S. 4B: 82.75h x 13.50w x 12.00d  
 MAIN OXYGEN STORAGE

O.S.S #5

CLEAR OPENING: 65.50h x 17.50w  
 INSIDE DIM'S. 5A: SEE PARTITION INTERIOR VIEW  
 INSIDE/OUTSIDE STORAGE WITH THREE (3) ADJUSTABLE SHELVES

INSIDE DIM'S. 5B: 15.00h x 20.25w x 18.00d

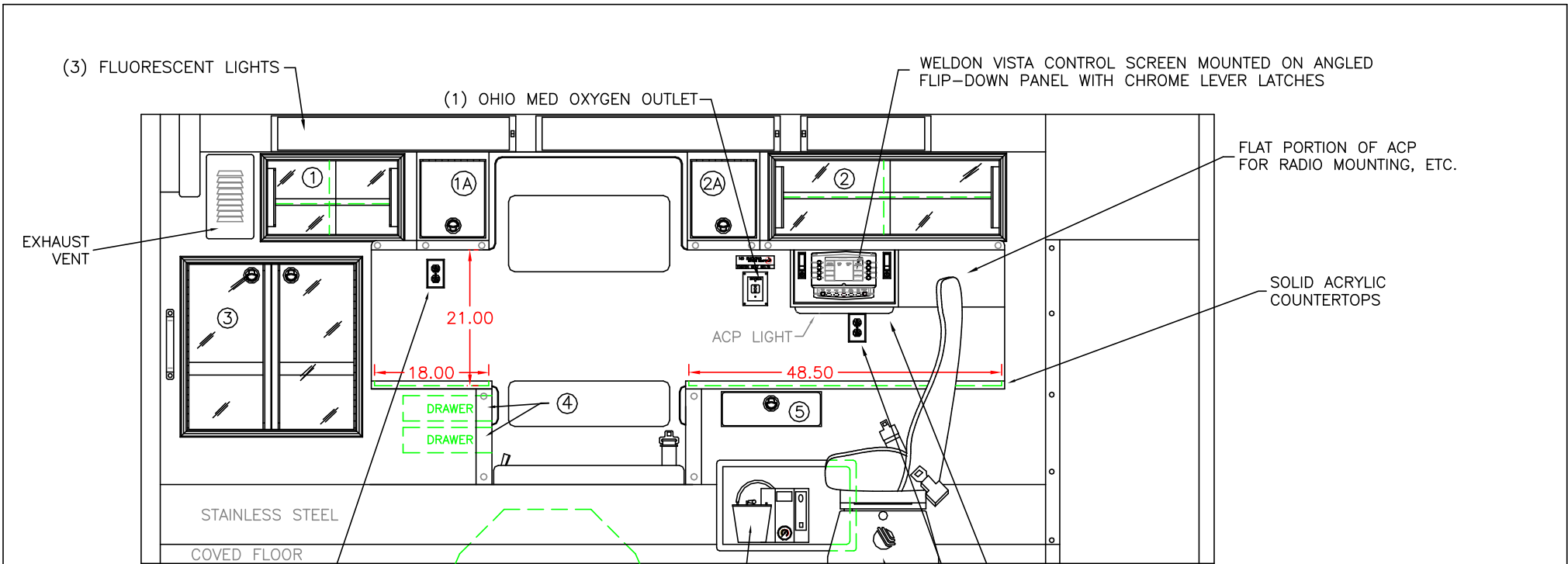
COMPARTMENTS WITH ADJUSTABLE SHELVES HAVE  
 RECESSED UNISTRUT SHELF TRACK

THIS DRAWING IS FOR REPRESENTATIONAL PURPOSES ONLY. DETAILS ARE CONCEPTUAL AND ARE SUBJECT TO CHANGE DURING DESIGN AND CONSTRUCTION  
 DIMENSIONS ARE APPROXIMATE UNLESS NOTED OTHERWISE TO MEET A SPECIFIC CUSTOMER NEED.



2014 CURBSIDE EXTERIOR VIEW  
 CHIEF XL-I/FORD F-450 CHASSIS

DATE:		08 APR 13		DRAWING NO.	
DWG.	GLF	REV.	NR	14XLF450-4	
1:30					



COMPARTMENT

#1 DOOR OPENING: 11.50h x 20.50w  
 INSIDE DIMS: 13.25h x 22.25w x 17.25d  
 (1) ADJUSTABLE SHELF  
 SLIDING ACRYLIC CABINET DOORS

#2 DOOR OPENING: 11.50h x 35.25w  
 INSIDE DIMS: 13.25h x 37.00w x 17.25d  
 (1) ADJUSTABLE SHELF  
 SLIDING ACRYLIC CABINET DOORS

#1A & #2A ANGLED-FACE CABINETS WITH LIFT-UP DOORS  
 LOCKING STAINLESS STEEL FLUSH PULL LATCHES  
 OPENING DIMS: 12.25h x 12.00w  
 EACH DOOR TO BE DRY-ERASE BOARD WITH HOLD-OPEN

#3 DOOR OPENING: 26.25h x 26.50w  
 INSIDE DIMS: O.S.S. #3  
 RECESSED .375" ACRYLIC DOORS WITH FULL LENGTH HANDLES  
 LOCKING STAINLESS STEEL FLUSH PULL LATCHES

#4 = TWO DRAWERS THAT PULL-OUT TOWARD CPR SEAT  
 INSIDE DIMS: 3.00h x 9.75w x 13.00d  
 LOCKING STAINLESS STEEL FLUSH PULL LATCHES

#5 PULL-OUT DRAWER WITH HINGED ACRYLIC WRITING SURFACE  
 INSIDE DIMS: 4.50h x 14.50w x 13.25d  
 LOCKING STAINLESS STEEL FLUSH PULL LATCH

CABINETS TO BE ALUMINUM

CABINET SHELF TRACK TO BE RECESSED

MINIMIZE EXPOSED FASTENERS

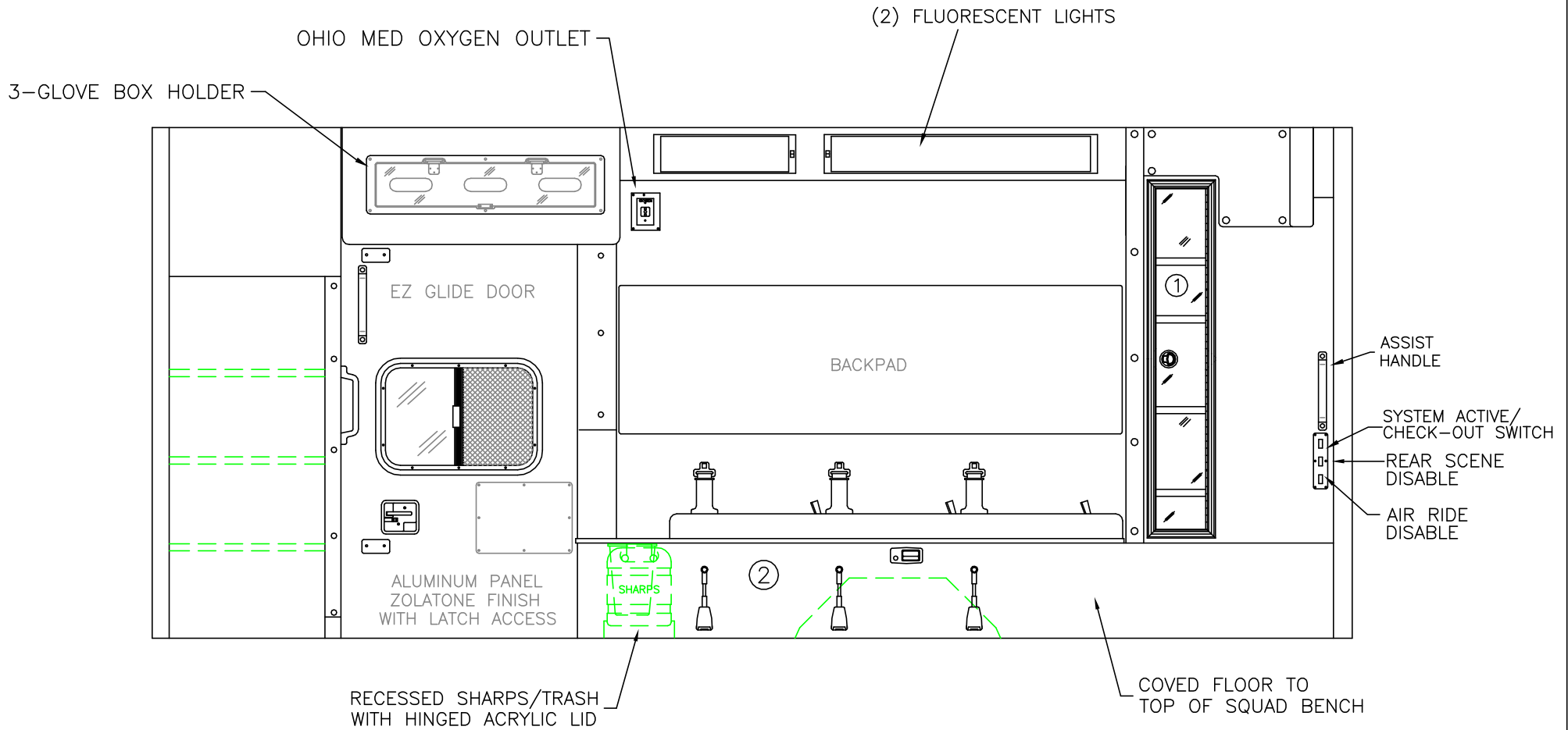
THIS DRAWING IS FOR REPRESENTATIONAL PURPOSES ONLY. DETAILS ARE CONCEPTUAL AND ARE SUBJECT TO CHANGE DURING DESIGN AND CONSTRUCTION  
 DIMENSIONS ARE APPROXIMATE UNLESS NOTED OTHERWISE TO MEET A SPECIFIC CUSTOMER NEED.



2014 STREETSIDE INTERIOR VIEW  
 CHIEF XL-I

DATE:		08 APR 13		DRAWING NO.
DWG.	REV.	GLF	NR	14XLF450-5

1:22



COMPARTMENT

- #1 DOOR OPENING: 48.00h x 7.25w
- INSIDE DIMS: 50.00h x 11.50w x 7.50d
- RECESSED .375" ACRYLIC DOOR
- (1) LOCKING STAINLESS STEEL FLUSH PULL LATCH
- (4) ADJUSTABLE SHELVES

- #2 INSIDE DIM'S: 14.25h x 77.00w x 21.00d

CABINETS TO BE ALUMINUM

CABINET SHELF TRACK TO BE RECESSED

MINIMIZE EXPOSED FASTENERS

THIS DRAWING IS FOR REPRESENTATIONAL PURPOSES ONLY. DETAILS ARE CONCEPTUAL AND ARE SUBJECT TO CHANGE DURING DESIGN AND CONSTRUCTION  
 DIMENSIONS ARE APPROXIMATE UNLESS NOTED OTHERWISE TO MEET A SPECIFIC CUSTOMER NEED.

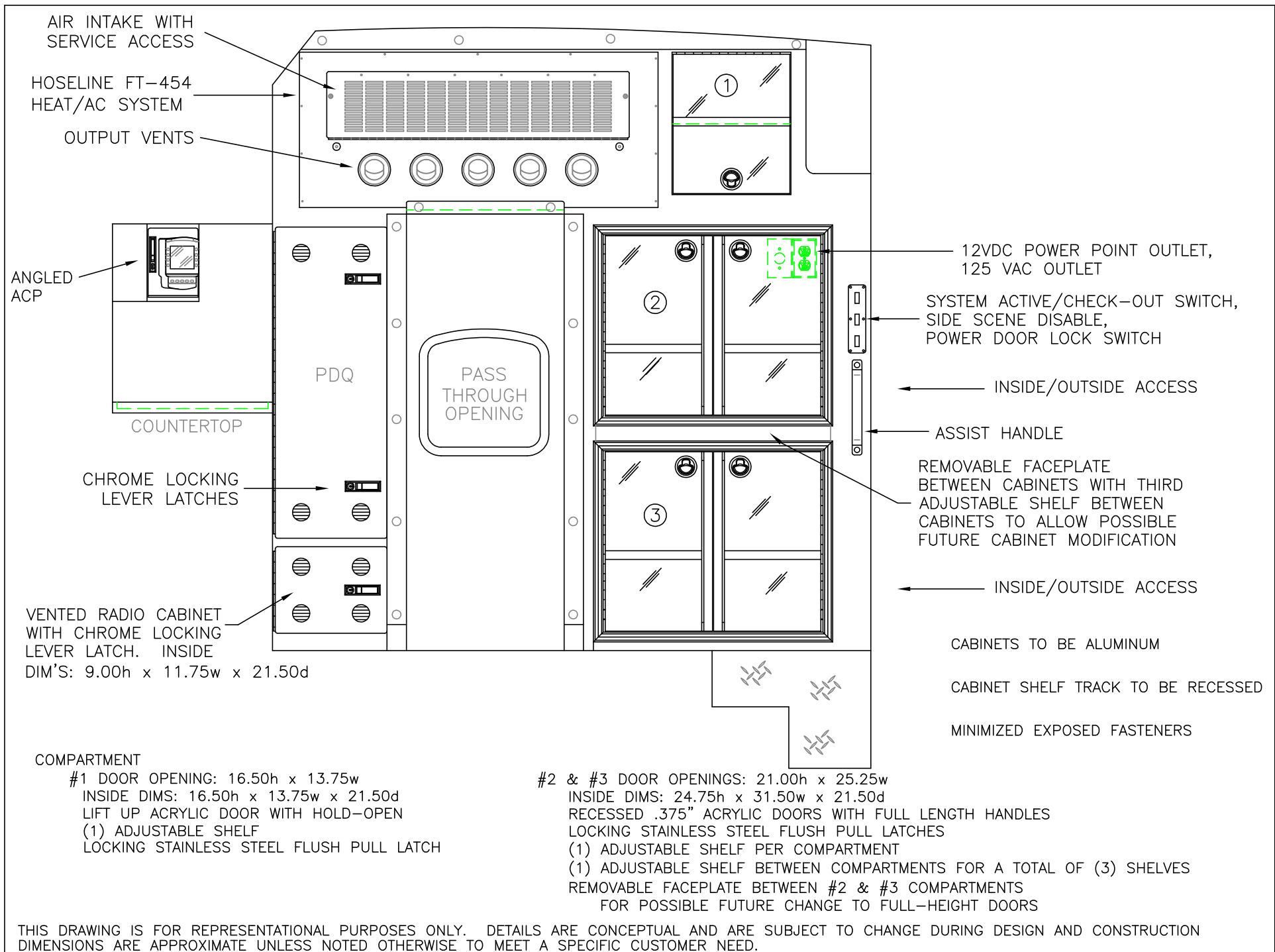


2014 CURBSIDE INTERIOR VIEW  
 CHIEF XL-I

1:20

DATE:	08 APR 13
DWG.:	GLF
REV.:	NR

DRAWING NO.	14XLF450-6
-------------	------------



THIS DRAWING IS FOR REPRESENTATIONAL PURPOSES ONLY. DETAILS ARE CONCEPTUAL AND ARE SUBJECT TO CHANGE DURING DESIGN AND CONSTRUCTION DIMENSIONS ARE APPROXIMATE UNLESS NOTED OTHERWISE TO MEET A SPECIFIC CUSTOMER NEED.

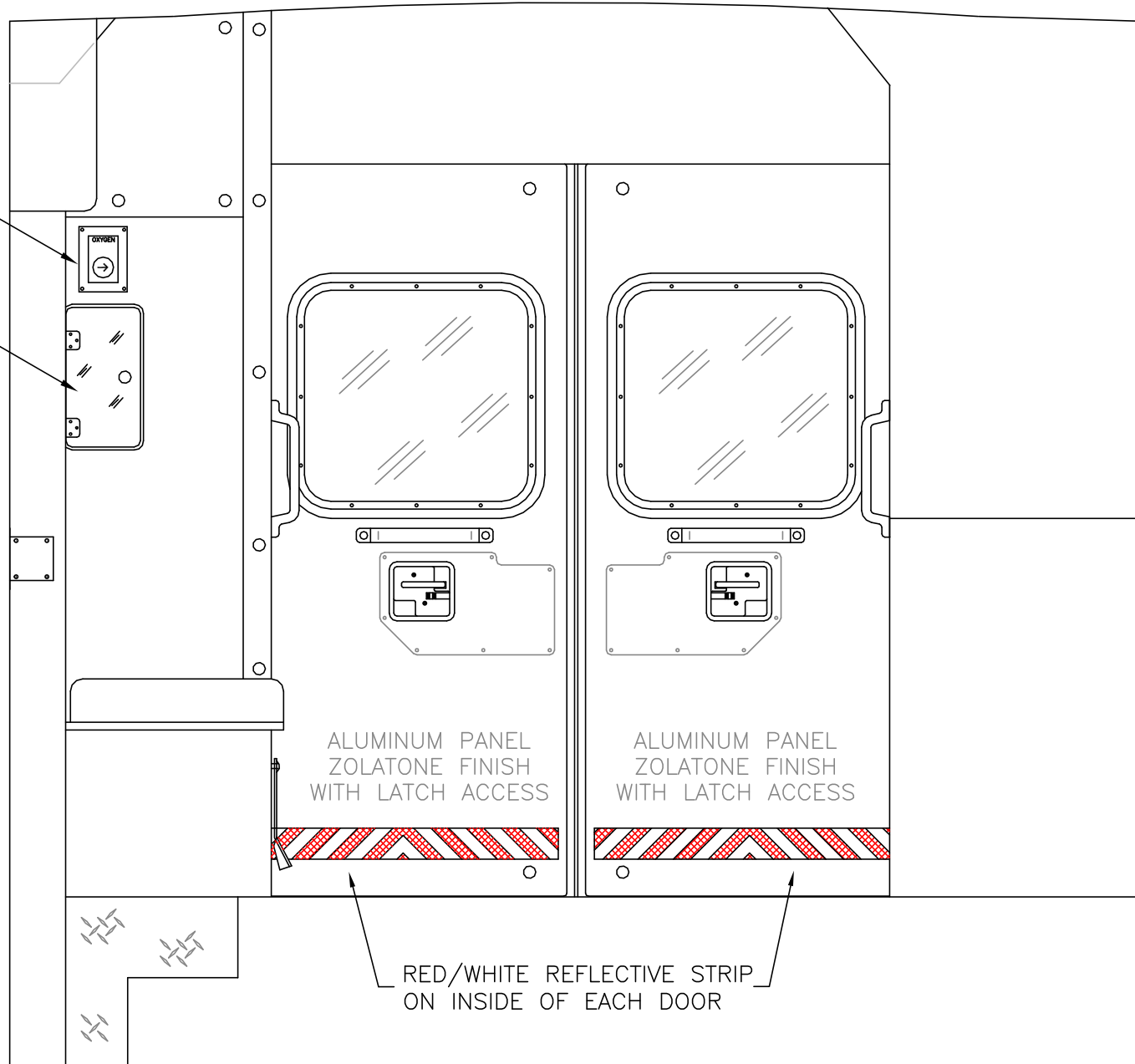


2014 PARTITION INTERIOR VIEW  
 CHIEF XL-I

DATE:		DRAWING NO.	
08 APR 13		14XLF450-7	
DWG.	REV.		
GLF	NR		

OXYGEN BYPASS

OXYGEN ACCESS



THIS DRAWING IS FOR REPRESENTATIONAL PURPOSES ONLY. DETAILS ARE CONCEPTUAL AND ARE SUBJECT TO CHANGE DURING DESIGN AND CONSTRUCTION  
 DIMENSIONS ARE APPROXIMATE UNLESS NOTED OTHERWISE TO MEET A SPECIFIC CUSTOMER NEED.



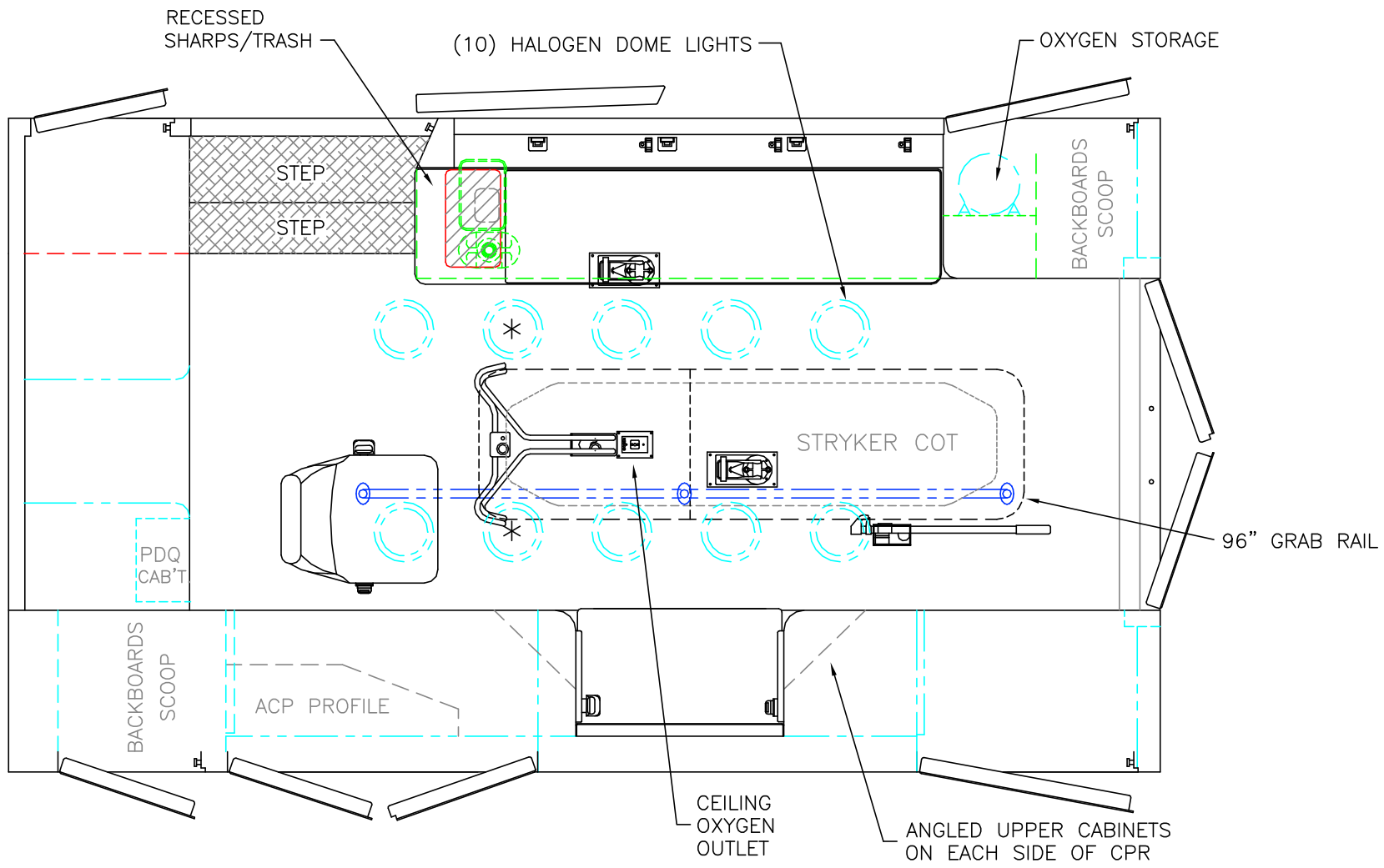
2014 REAR INTERIOR VIEW  
 CHIEF XL-1

1:12

DATE:	08 APR 13
DWG.	GLF
REV.	NR

DRAWING NO.	14XLF450-8
-------------	------------





 = (2) RECESSED CEILING IV HANGER LOCATIONS

\* (2) ANTENNA BASES LOCATED OUTBOARD OF DOME LIGHTS WITH COAX SERVICE LOOP

STRYKER CENTER MOUNT COT HARDWARE

MODULE WIDTH = 96"  
 MODULE LENGTH = 169"  
 MODULE HEAD ROOM = 72"

THIS DRAWING IS FOR REPRESENTATIONAL PURPOSES ONLY. DETAILS ARE CONCEPTUAL AND ARE SUBJECT TO CHANGE DURING DESIGN AND CONSTRUCTION DIMENSIONS ARE APPROXIMATE UNLESS NOTED OTHERWISE TO MEET A SPECIFIC CUSTOMER NEED.



2014 FLOOR INTERIOR VIEW  
 CHIEF XL-1

DATE: 08 APR 13	DRAWING NO.	
	DWG. GLF	REV. NR
1:22	14XLF450-9	