

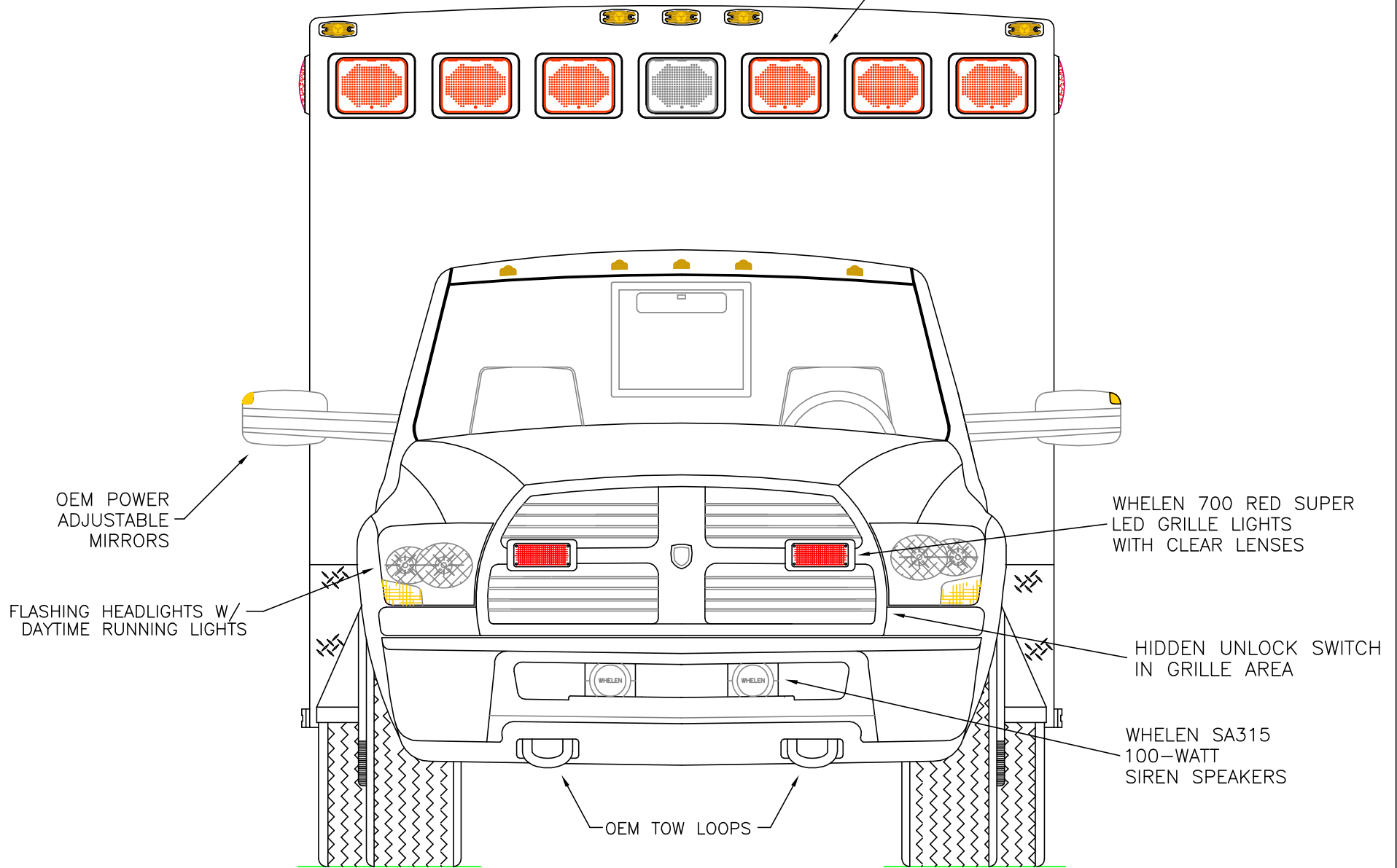
DIMENSIONS FOR OVERALL HEIGHT AND LENGTH ARE APPROXIMATE

OVERALL HEIGHT = 110"

OVERALL WIDTH WITH RUB

RAILS & FENDERETTES = 98"

(7) WHELEN 900 SUPER LED WARNING LIGHTS
RED/RED/RED/WHITE/RED/RED/RED
WITH CLEAR LENSES



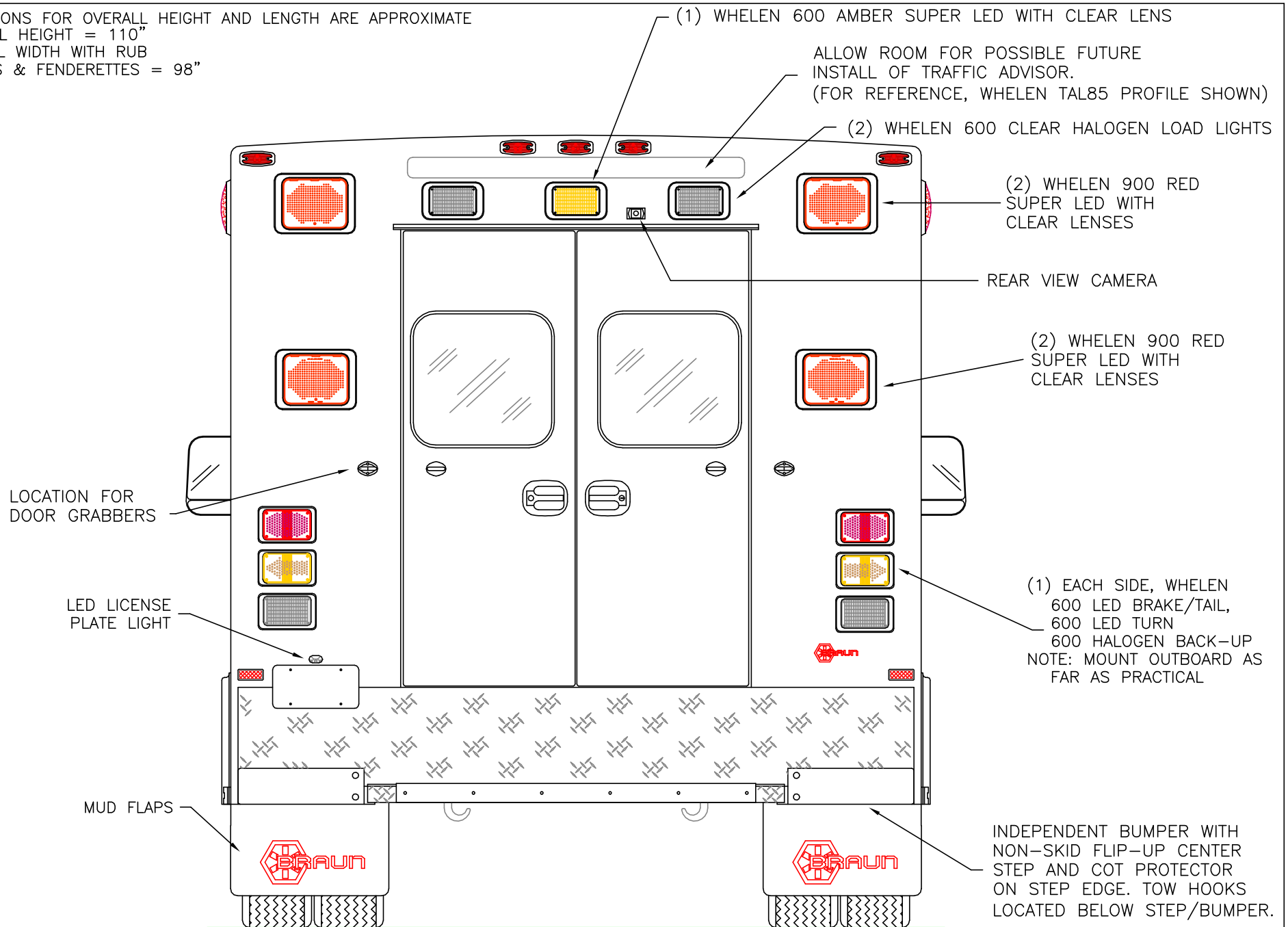
THIS DRAWING IS FOR REPRESENTATIONAL PURPOSES ONLY. DETAILS ARE CONCEPTUAL AND ARE SUBJECT TO CHANGE DURING DESIGN AND CONSTRUCTION
DIMENSIONS ARE APPROXIMATE UNLESS NOTED OTHERWISE TO MEET A SPECIFIC CUSTOMER NEED.



2014 FRONT EXTERIOR VIEW
CHIEF XL-1/RAM 4500 CHASSIS

DATE:	08 APR 13	DRAWING NO.	
DWG.	GLF	REV.	NR
1:17			14XLR4500-1

DIMENSIONS FOR OVERALL HEIGHT AND LENGTH ARE APPROXIMATE
 OVERALL HEIGHT = 110"
 OVERALL WIDTH WITH RUB
 RAILS & FENDERETTES = 98"



THIS DRAWING IS FOR REPRESENTATIONAL PURPOSES ONLY. DETAILS ARE CONCEPTUAL AND ARE SUBJECT TO CHANGE DURING DESIGN AND CONSTRUCTION
 DIMENSIONS ARE APPROXIMATE UNLESS NOTED OTHERWISE TO MEET A SPECIFIC CUSTOMER NEED.



2014 REAR EXTERIOR VIEW
 CHIEF XL-1/RAM 4500 CHASSIS

DATE:
 08 APR 13
 DWG. REV.

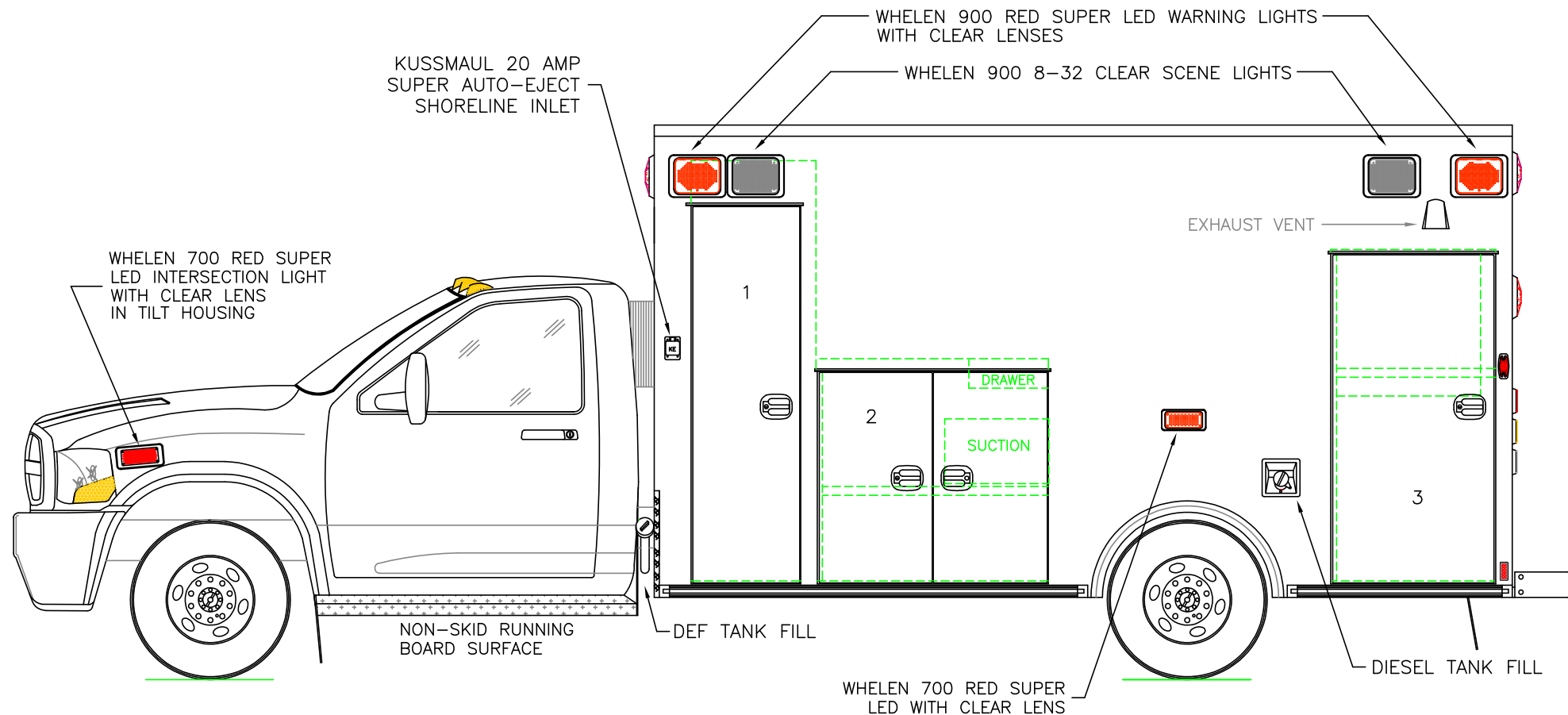
DRAWING NO.

1:16

GLF NR

14XLR4500-2

DIMENSIONS FOR OVERALL HEIGHT AND LENGTH ARE APPROXIMATE
 OVERALL HEIGHT = 110"
 OVERALL LENGTH = 306.5"
 MODULE LENGTH = 169"



COMPARTMENT

O.S.S #1

CLEAR OPENING: 73.00h x 18.25w
 INSIDE DIM'S.: 82.75h x 24.50w x 20.75d
 BACKBOARD/SCOOP STORAGE

O.S.S #2

CLEAR OPENING: 40.25h x 39.50w
 INSIDE DIM'S.: 43.75h x 44.50w x 20.75d
 (1) ADJUSTABLE SHELF

O.S.S #3

CLEAR OPENING: 63.50h x 28.75w
 INSIDE DIM'S.: 65.25h x 31.25w x 20.75d
 INSIDE/OUTSIDE ACCESS
 (1) ADJUSTABLE SHELF

COMPARTMENTS WITH ADJUSTABLE SHELVES HAVE RECESSED UNISTRUT SHELF TRACK

THIS DRAWING IS FOR REPRESENTATIONAL PURPOSES ONLY. DETAILS ARE CONCEPTUAL AND ARE SUBJECT TO CHANGE DURING DESIGN AND CONSTRUCTION
 DIMENSIONS ARE APPROXIMATE UNLESS NOTED OTHERWISE TO MEET A SPECIFIC CUSTOMER NEED.



2014 STREETSIDE EXTERIOR VIEW
 CHIEF XL-1/RAM 4500 CHASSIS

DATE:
08 APR 13
 DWG. GLF
 REV. NR

DRAWING NO.
14XLR4500-3

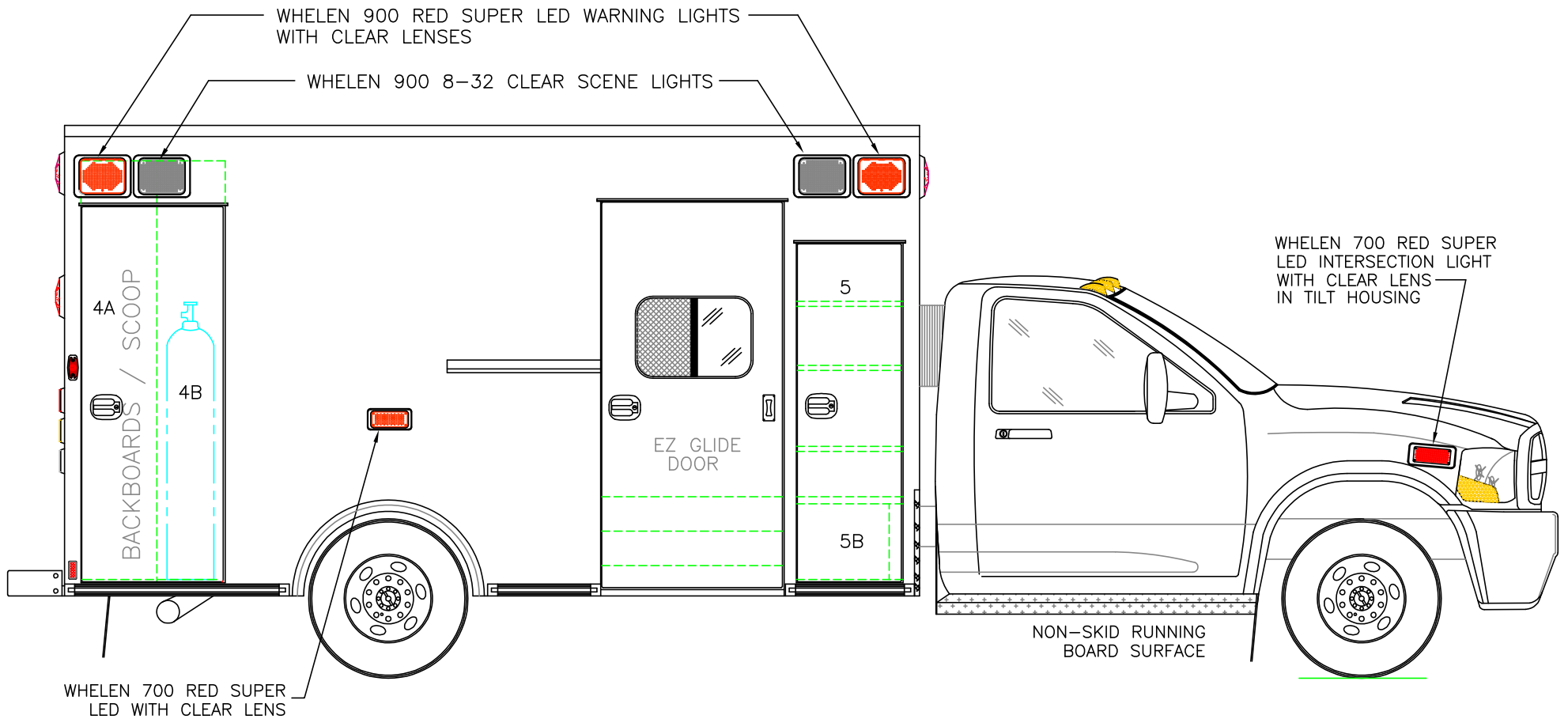
1:30

DIMENSIONS FOR OVERALL HEIGHT AND LENGTH ARE APPROXIMATE

OVERALL HEIGHT = 110"

OVERALL LENGTH = 306.5"

MODULE LENGTH = 169"



COMPARTMENT

O.S.S #4

CLEAR OPENING: 73.00h x 24.75w
 INSIDE DIM'S. 4A: 82.75h x 15.00w x 20.75d
 BACKBOARD/SCOOP STORAGE

INSIDE DIM'S. 4B: 82.75h x 13.50w x 12.00d
 MAIN OXYGEN STORAGE

O.S.S #5

CLEAR OPENING: 65.50h x 17.50w
 INSIDE DIM'S. 5A: SEE PARTITION INTERIOR VIEW
 INSIDE/OUTSIDE STORAGE WITH THREE (3) ADJUSTABLE SHELVES

INSIDE DIM'S. 5B: 15.00h x 20.25w x 18.00d

COMPARTMENTS WITH ADJUSTABLE SHELVES HAVE
 RECESSED UNISTRUT SHELF TRACK

THIS DRAWING IS FOR REPRESENTATIONAL PURPOSES ONLY. DETAILS ARE CONCEPTUAL AND ARE SUBJECT TO CHANGE DURING DESIGN AND CONSTRUCTION
 DIMENSIONS ARE APPROXIMATE UNLESS NOTED OTHERWISE TO MEET A SPECIFIC CUSTOMER NEED.

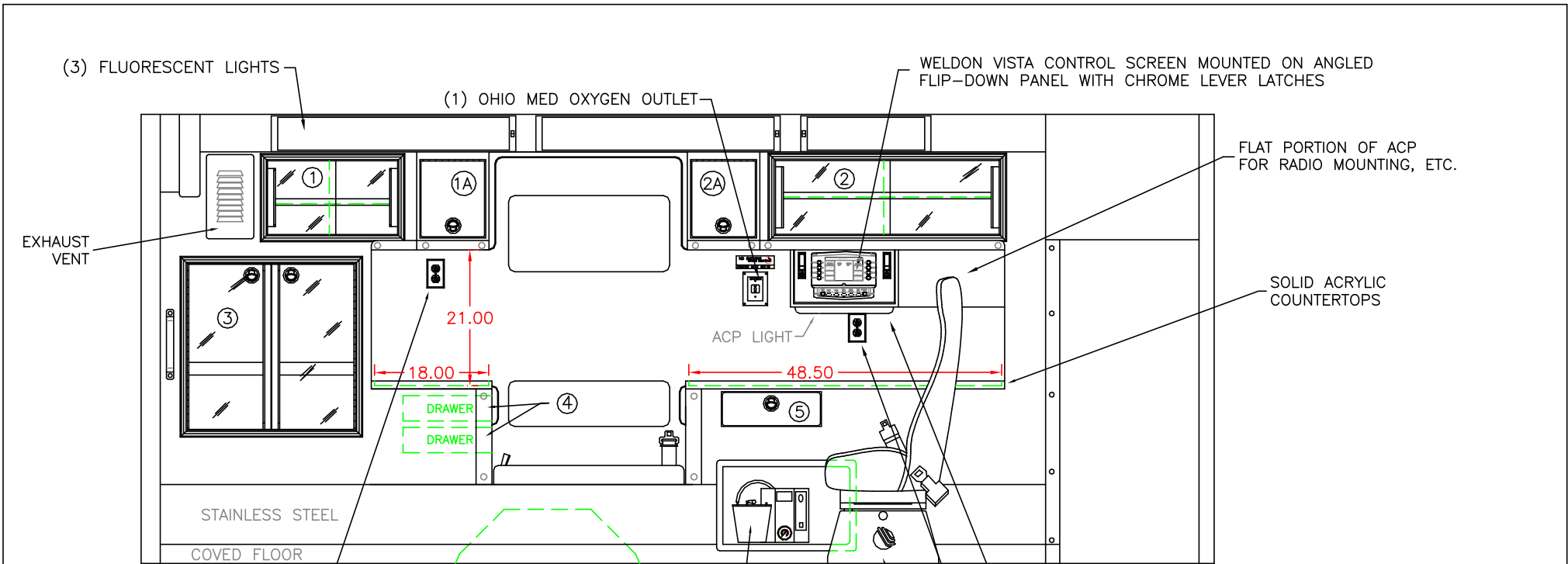


2014 CURBSIDE EXTERIOR VIEW
 CHIEF XL-1/RAM 4500 CHASSIS

DATE:
 08 APR 13
 DWG. GLF
 REV. NR

DRAWING NO.
 14XLR4500-4

1:30



RECESSED IMPACT #324 SUCTION
 NOTE: HOUSING TO BE OVERSIZE
 TO ACCOMODATE CHANGEOUT OF
 UNIT TO PORTABLE SUCTION
 SUCH AS SSCOR VX-2, ETC.

- COMPARTMENT
- #1 DOOR OPENING: 11.50h x 20.50w
 INSIDE DIMS: 13.25h x 22.25w x 17.25d
 (1) ADJUSTABLE SHELF
 SLIDING ACRYLIC CABINET DOORS
 - #2 DOOR OPENING: 11.50h x 35.25w
 INSIDE DIMS: 13.25h x 37.00w x 17.25d
 (1) ADJUSTABLE SHELF
 SLIDING ACRYLIC CABINET DOORS
 - #1A & #2A ANGLED-FACE CABINETS WITH LIFT-UP DOORS
 LOCKING STAINLESS STEEL FLUSH PULL LATCHES
 OPENING DIMS: 12.25h x 12.00w
 EACH DOOR TO BE DRY-ERASE BOARD WITH HOLD-OPEN

- #3 DOOR OPENING: 26.25h x 26.50w
 INSIDE DIMS: O.S.S. #3
 RECESSED .375" ACRYLIC DOORS WITH FULL LENGTH HANDLES
 LOCKING STAINLESS STEEL FLUSH PULL LATCHES
- #4 = TWO DRAWERS THAT PULL-OUT TOWARD CPR SEAT
 INSIDE DIMS: 3.00h x 9.75w x 13.00d
 LOCKING STAINLESS STEEL FLUSH PULL LATCHES
- #5 PULL-OUT DRAWER WITH HINGED ACRYLIC WRITING SURFACE
 INSIDE DIMS: 4.50h x 14.50w x 13.25d
 LOCKING STAINLESS STEEL FLUSH PULL LATCH

- CABINETS TO BE ALUMINUM
- CABINET SHELF TRACK TO BE RECESSED
- MINIMIZE EXPOSED FASTENERS

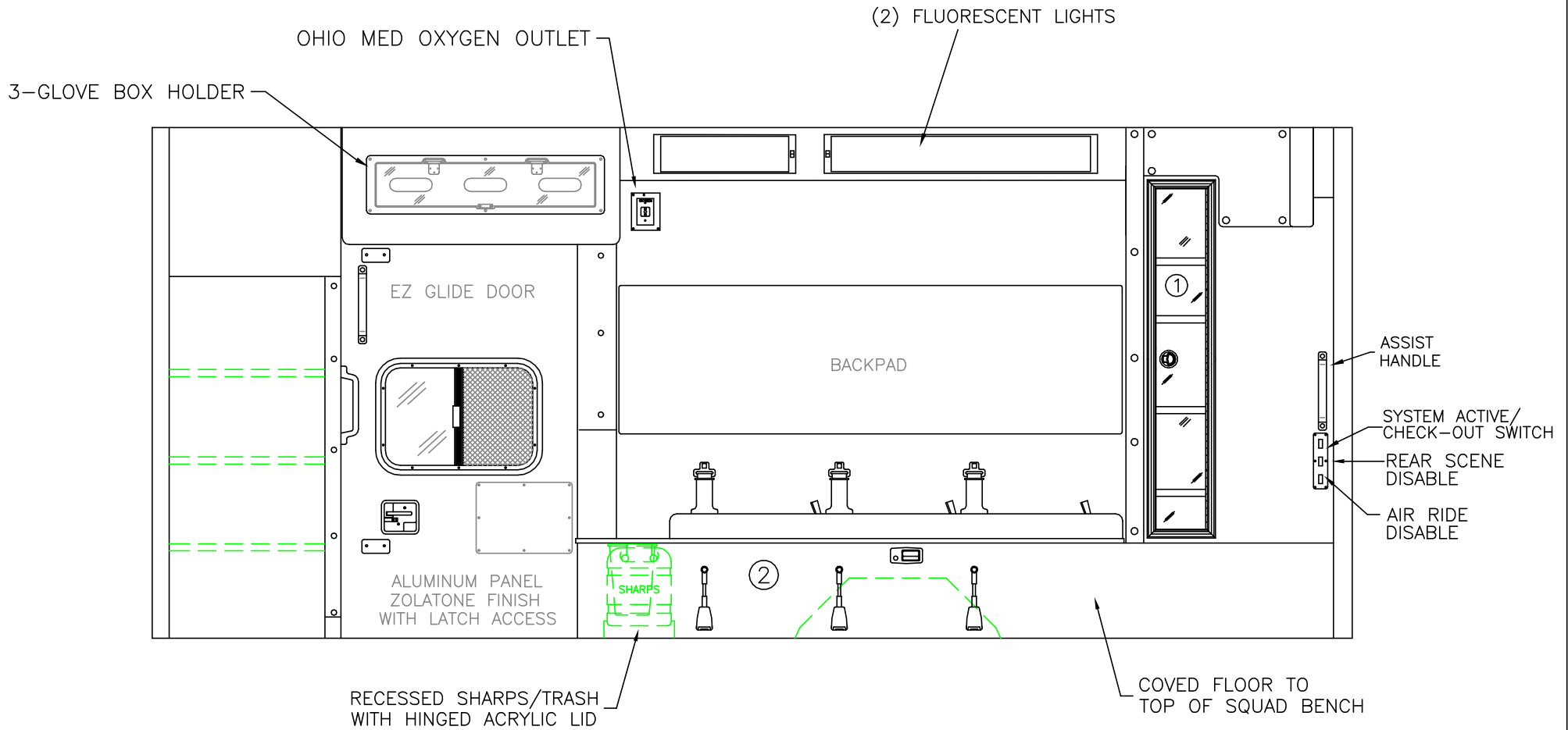
THIS DRAWING IS FOR REPRESENTATIONAL PURPOSES ONLY. DETAILS ARE CONCEPTUAL AND ARE SUBJECT TO CHANGE DURING DESIGN AND CONSTRUCTION
 DIMENSIONS ARE APPROXIMATE UNLESS NOTED OTHERWISE TO MEET A SPECIFIC CUSTOMER NEED.



2014 STREETSIDE INTERIOR VIEW
 CHIEF XL-I

DATE:		08 APR 13		DRAWING NO.
DWG.	REV.	GLF	NR	14XLR4500-5

1:22



COMPARTMENT

- #1 DOOR OPENING: 48.00h x 7.25w
- INSIDE DIMS: 50.00h x 11.50w x 7.50d
- RECESSED .375" ACRYLIC DOOR
- (1) LOCKING STAINLESS STEEL FLUSH PULL LATCH
- (4) ADJUSTABLE SHELVES

- #2 INSIDE DIM'S: 14.25h x 77.00w x 21.00d

CABINETS TO BE ALUMINUM

CABINET SHELF TRACK TO BE RECESSED

MINIMIZE EXPOSED FASTENERS

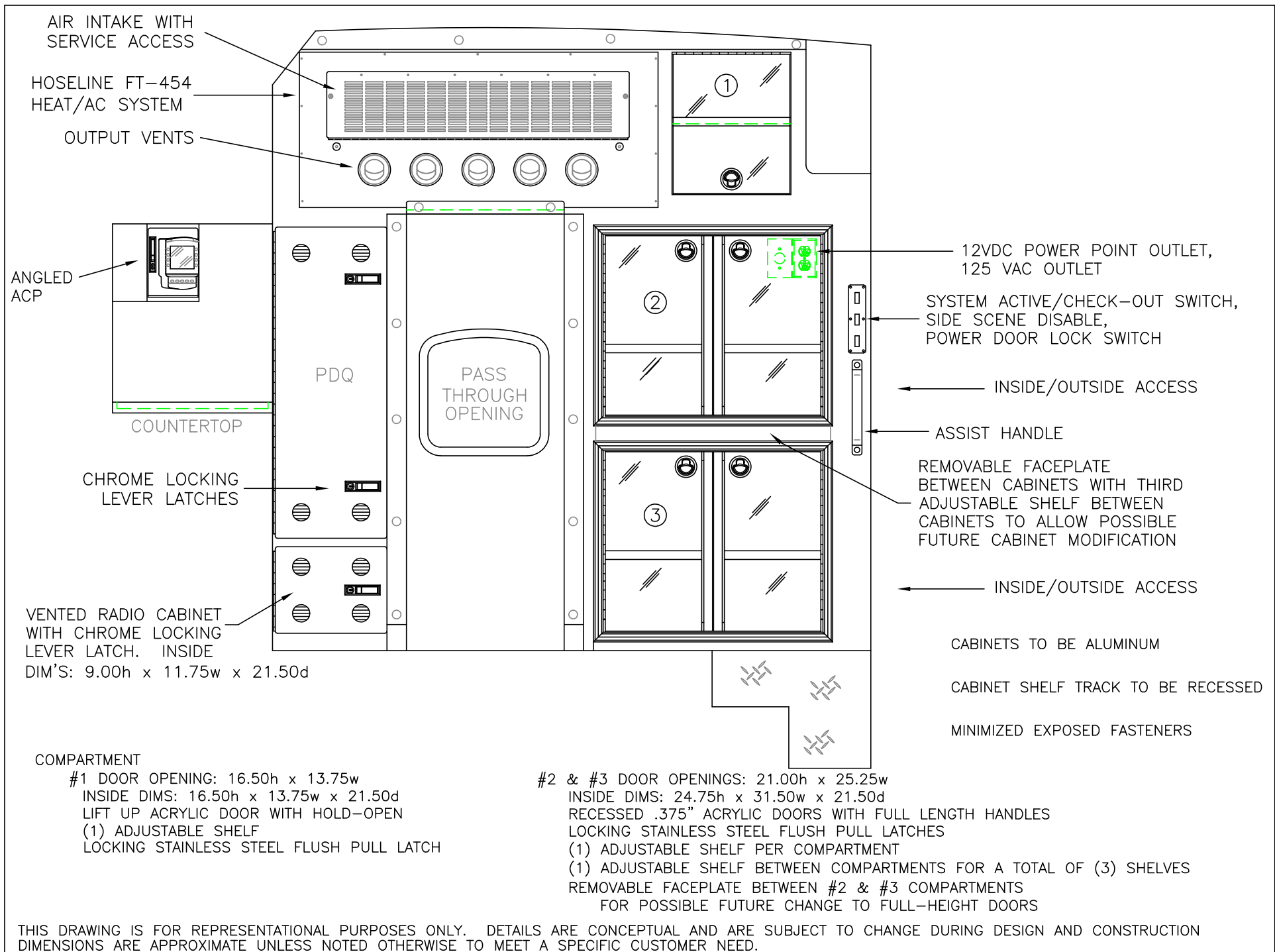
THIS DRAWING IS FOR REPRESENTATIONAL PURPOSES ONLY. DETAILS ARE CONCEPTUAL AND ARE SUBJECT TO CHANGE DURING DESIGN AND CONSTRUCTION
 DIMENSIONS ARE APPROXIMATE UNLESS NOTED OTHERWISE TO MEET A SPECIFIC CUSTOMER NEED.



2014 CURBSIDE INTERIOR VIEW
 CHIEF XL-I

DATE:	08 APR 13	DRAWING NO.	14XLR4500-6
DWG.	GLF	REV.	

1:20



THIS DRAWING IS FOR REPRESENTATIONAL PURPOSES ONLY. DETAILS ARE CONCEPTUAL AND ARE SUBJECT TO CHANGE DURING DESIGN AND CONSTRUCTION DIMENSIONS ARE APPROXIMATE UNLESS NOTED OTHERWISE TO MEET A SPECIFIC CUSTOMER NEED.

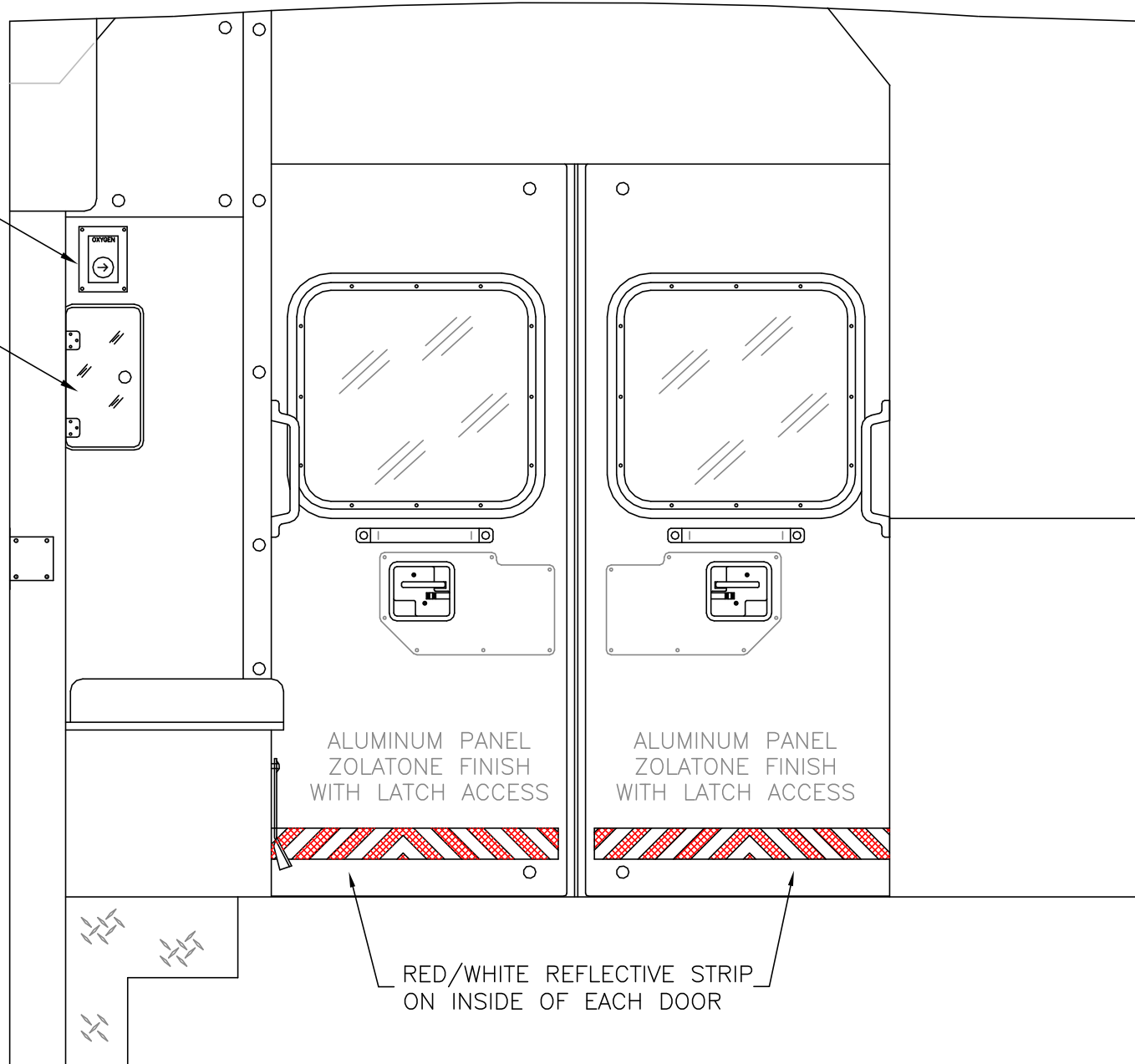


2014 PARTITION INTERIOR VIEW
 CHIEF XL-1

DATE:		DRAWING NO.	
08 APR 13		14XLR4500-7	
DWG.	REV.		
GLF	NR		

OXYGEN BYPASS

OXYGEN ACCESS



ALUMINUM PANEL
ZOLATONE FINISH
WITH LATCH ACCESS

ALUMINUM PANEL
ZOLATONE FINISH
WITH LATCH ACCESS

RED/WHITE REFLECTIVE STRIP
ON INSIDE OF EACH DOOR

THIS DRAWING IS FOR REPRESENTATIONAL PURPOSES ONLY. DETAILS ARE CONCEPTUAL AND ARE SUBJECT TO CHANGE DURING DESIGN AND CONSTRUCTION
DIMENSIONS ARE APPROXIMATE UNLESS NOTED OTHERWISE TO MEET A SPECIFIC CUSTOMER NEED.

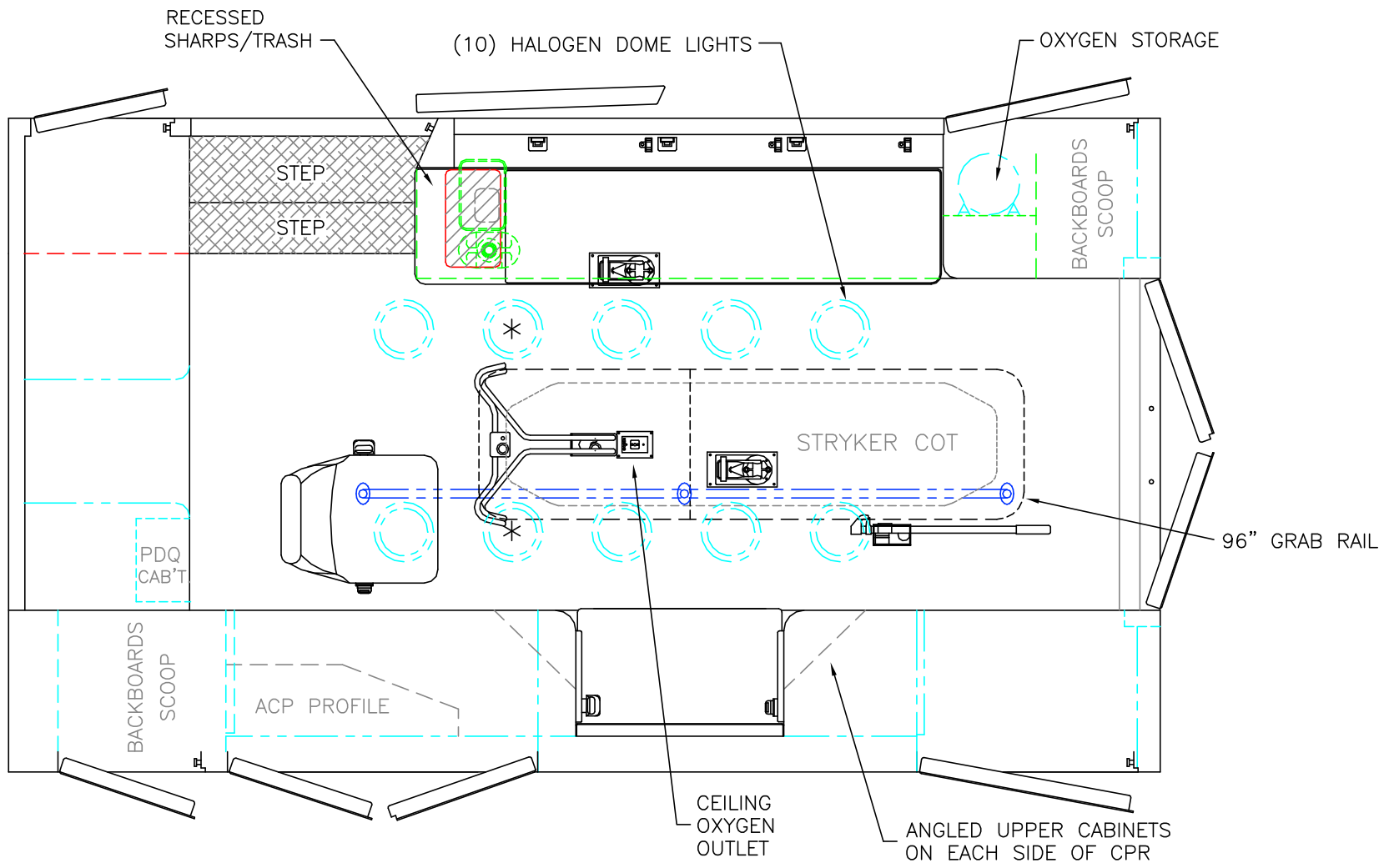


2014 REAR INTERIOR VIEW
CHIEF XL-I

1:12

DATE:	08 APR 13
DWG.	GLF
REV.	NR

DRAWING NO.	14XLR4500-8
-------------	-------------



 = (2) RECESSED CEILING IV HANGER LOCATIONS

* (2) ANTENNA BASES LOCATED OUTBOARD OF DOME LIGHTS WITH COAX SERVICE LOOP

STRYKER CENTER MOUNT COT HARDWARE

MODULE WIDTH = 96"
 MODULE LENGTH = 169"
 MODULE HEAD ROOM = 72"

THIS DRAWING IS FOR REPRESENTATIONAL PURPOSES ONLY. DETAILS ARE CONCEPTUAL AND ARE SUBJECT TO CHANGE DURING DESIGN AND CONSTRUCTION DIMENSIONS ARE APPROXIMATE UNLESS NOTED OTHERWISE TO MEET A SPECIFIC CUSTOMER NEED.



2014 FLOOR INTERIOR VIEW
 CHIEF XL-1

DATE: 08 APR 13	DRAWING NO.	
	DWG. GLF	REV. NR
1:22	14XLR4500-9	