

DIMENSIONS FOR OVERALL HEIGHT AND LENGTH ARE APPROXIMATE

OVERALL HEIGHT = 109.75"

OVERALL WIDTH WITH RUB

RAILS & FENDERETTES = 98"

(7) WHELEN 600 SUPER LED WITH CLEAR LENSES  
RED / RED / RED / WHITE / RED / RED / RED

(5) TECNIQ S330 AMBER  
MINI-LED MARKER LIGHTS

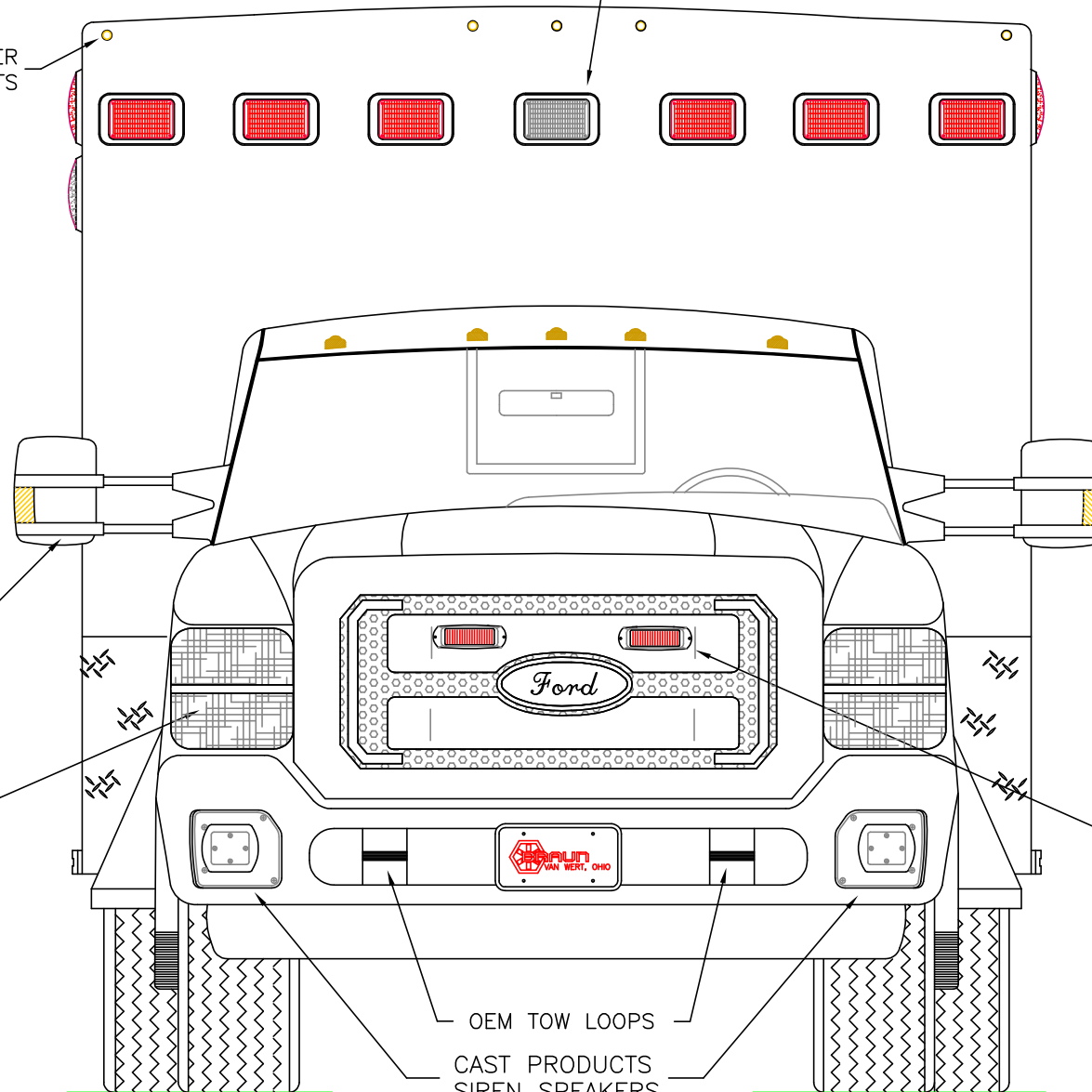
OEM POWER  
ADJUSTABLE  
MIRRORS

FLASHING HEADLIGHTS W/  
DAYTIME RUNNING LIGHTS

(2) WHELEN 500 SERIES  
RED SUPER LED LIGHTS  
WITH CLEAR LENSES  
IN CPI HOUSINGS

OEM TOW LOOPS

CAST PRODUCTS  
SIREN SPEAKERS



THIS DRAWING IS FOR REPRESENTATIONAL PURPOSES ONLY. DETAILS ARE CONCEPTUAL AND ARE SUBJECT TO CHANGE DURING DESIGN AND CONSTRUCTION  
DIMENSIONS ARE APPROXIMATE UNLESS NOTED OTHERWISE TO MEET A SPECIFIC CUSTOMER NEED.



2014 FRONT EXTERIOR VIEW  
BRAUN LIBERTY TYPE-I / FORD F-450 CHASSIS

1:17

DATE:  
08 APR 13  
DWG. GLF  
REV. NR

DRAWING NO.  
14-LIB-F450-1

DIMENSIONS FOR OVERALL HEIGHT AND LENGTH ARE APPROXIMATE  
 OVERALL HEIGHT = 109.75"  
 OVERALL WIDTH WITH RUB  
 RAILS & FENDERETTES = 98"

(5) WHELEN 600 SUPER LED WARNING LIGHTS WITH CLEAR LENSES,  
 (2) WHELEN 600 CLEAR HALOGEN LOAD LIGHTS:  
 RED / RED / LOAD / AMBER / LOAD / RED / RED

(5) TECNIQ S330 RED  
 MINI-LED MARKER LIGHTS

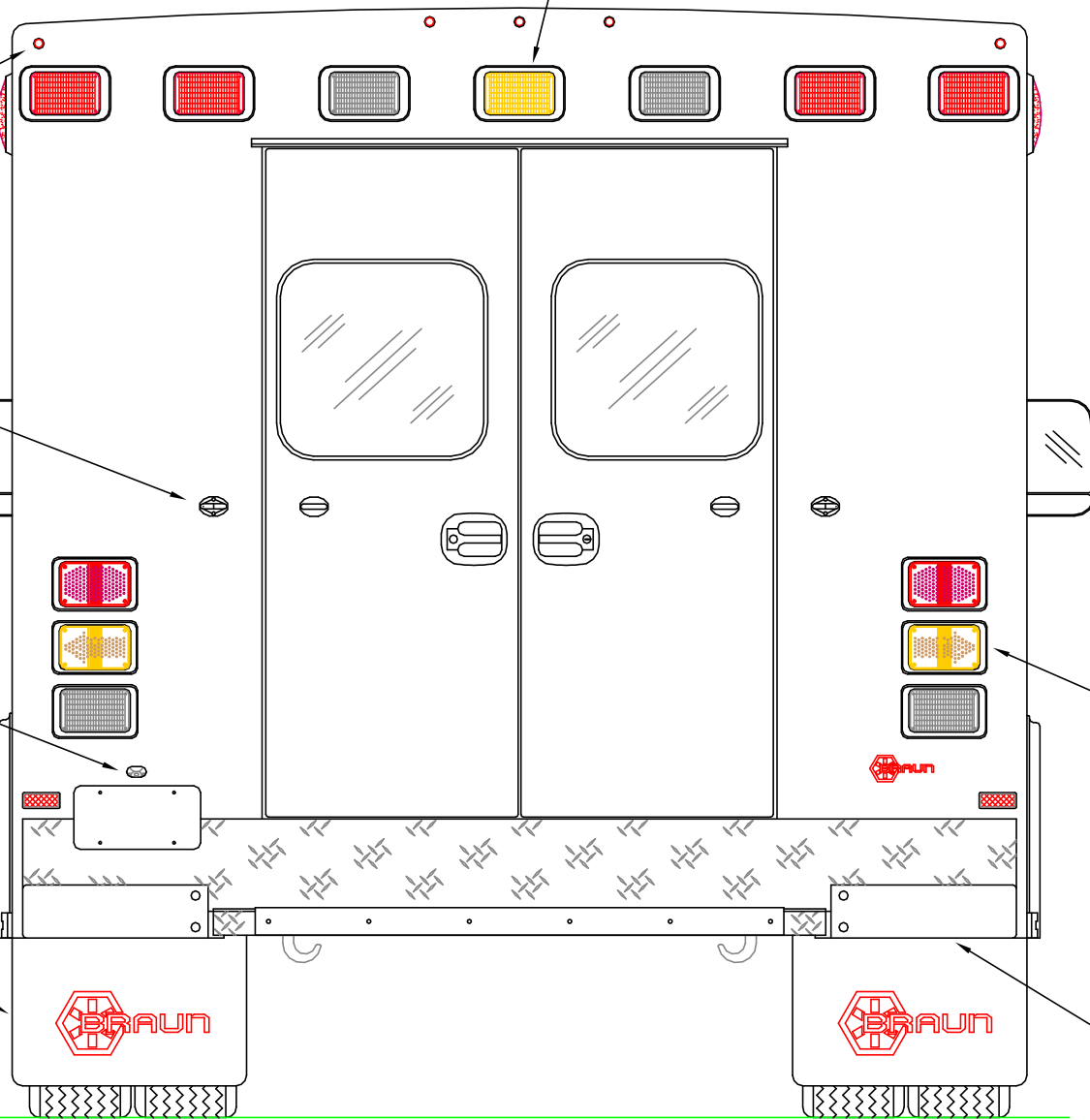
LOCATION FOR  
 DOOR GRABBERS

LED LICENSE  
 PLATE LIGHT

MUD FLAPS

(1) EACH SIDE, WHELEN  
 600 LED BRAKE/TAIL,  
 600 LED TURN  
 600 HALOGEN BACK-UP  
 NOTE: MOUNT OUTBOARD AS  
 FAR AS PRACTICAL

INDEPENDENT BUMPER WITH  
 NON-SKID FLIP-UP CENTER  
 STEP AND COT PROTECTOR  
 ON STEP EDGE. TOW HOOKS  
 LOCATED BELOW STEP/BUMPER.



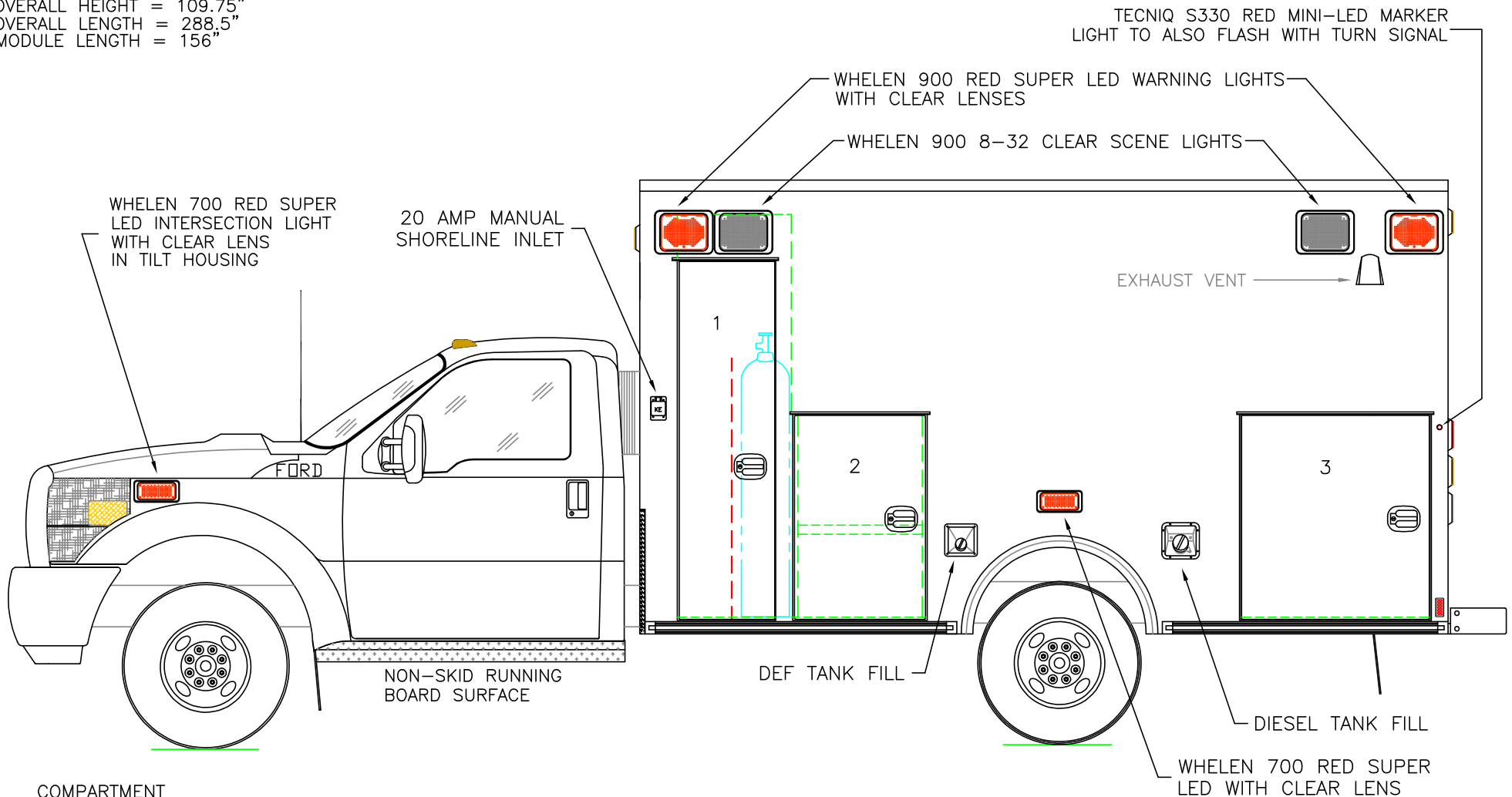
THIS DRAWING IS FOR REPRESENTATIONAL PURPOSES ONLY. DETAILS ARE CONCEPTUAL AND ARE SUBJECT TO CHANGE DURING DESIGN AND CONSTRUCTION  
 DIMENSIONS ARE APPROXIMATE UNLESS NOTED OTHERWISE TO MEET A SPECIFIC CUSTOMER NEED.



2014 REAR EXTERIOR VIEW  
 BRAUN LIBERTY TYPE-I

DATE: 08 APR 13		DRAWING NO.
DWG. GLF	REV. NR	14-LIB-F450-2

DIMENSIONS FOR OVERALL HEIGHT AND LENGTH ARE APPROXIMATE  
 OVERALL HEIGHT = 109.75"  
 OVERALL LENGTH = 288.5"  
 MODULE LENGTH = 156"



COMPARTMENT

O.S.S #1

CLEAR OPENING: 68.00h x 15.50w  
 INSIDE DIM'S.: 77.75h x 22.00w x 20.75d  
 BACKBOARD/SCOOP STORAGE WITH 50" TALL DIVIDER  
 OXYGEN STORAGE REARWARD OF DIVIDER

O.S.S #2

CLEAR OPENING: 38.50h x 22.00w  
 INSIDE DIM'S.: 41.50h x 24.00w x 20.75d  
 (1) ADJUSTABLE SHELF

O.S.S #3

CLEAR OPENING: 38.50h x 33.25w  
 INSIDE DIM'S.: 41.50h x 36.75w x 20.75d

COMPARTMENTS WITH ADJUSTABLE SHELVES HAVE  
 RECESSED UNISTRUT SHELF TRACK

THIS DRAWING IS FOR REPRESENTATIONAL PURPOSES ONLY. DETAILS ARE CONCEPTUAL AND ARE SUBJECT TO CHANGE DURING DESIGN AND CONSTRUCTION  
 DIMENSIONS ARE APPROXIMATE UNLESS NOTED OTHERWISE TO MEET A SPECIFIC CUSTOMER NEED.



2014 STREETSIDE EXTERIOR VIEW  
 BRAUN LIBERTY TYPE-I / FORD F-450 CHASSIS

1:28

DATE: 08 APR 13		DRAWING NO. 14-LIB-F450-3
DWG. GLF	REV. NR	

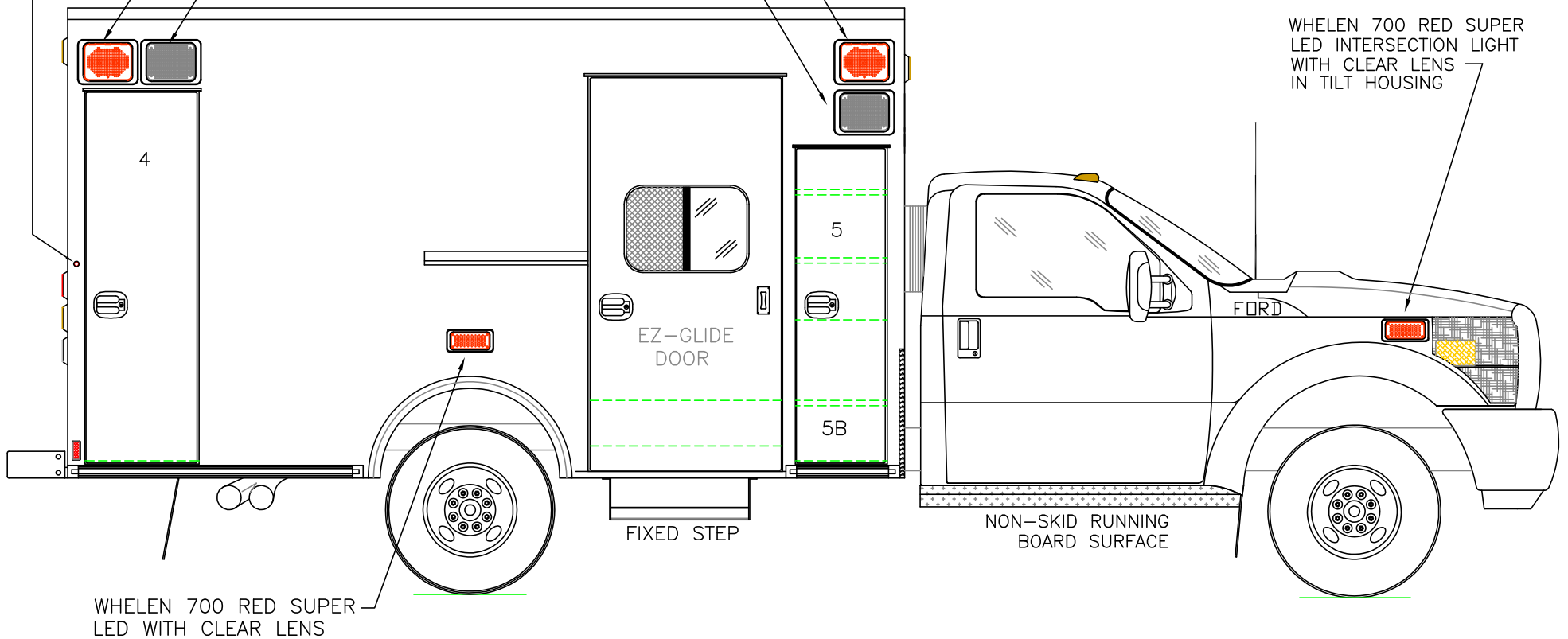
TECNIQ S330 RED MINI-LED MARKER LIGHT TO ALSO FLASH WITH TURN SIGNAL

WHELEN 900 RED SUPER LED WARNING LIGHTS WITH CLEAR LENSES

WHELEN 900 8-32 CLEAR SCENE LIGHTS

DIMENSIONS FOR OVERALL HEIGHT AND LENGTH ARE APPROXIMATE  
 OVERALL HEIGHT = 109.75"  
 OVERALL LENGTH = 288.5"  
 MODULE LENGTH = 156"

WHELEN 700 RED SUPER LED INTERSECTION LIGHT WITH CLEAR LENS IN TILT HOUSING



COMPARTMENT

O.S.S #4  
 CLEAR OPENING: 68.00h x 17.75w  
 INSIDE DIM'S.: 77.75h x 21.50w x 20.50d  
 BACKBOARD/SCOOP STORAGE

O.S.S #5  
 CLEAR OPENING: 57.50h x 13.50w  
 INSIDE DIM'S. 5A: SEE PARTITION INTERIOR VIEW  
 INSIDE/OUTSIDE STORAGE WITH (2) ADJUSTABLE SHELVES  
 INSIDE DIM'S. 5B: 10.25h x 16.00w x 17.50d

COMPARTMENTS WITH ADJUSTABLE SHELVES HAVE RECESSED UNISTRUT SHELF TRACK

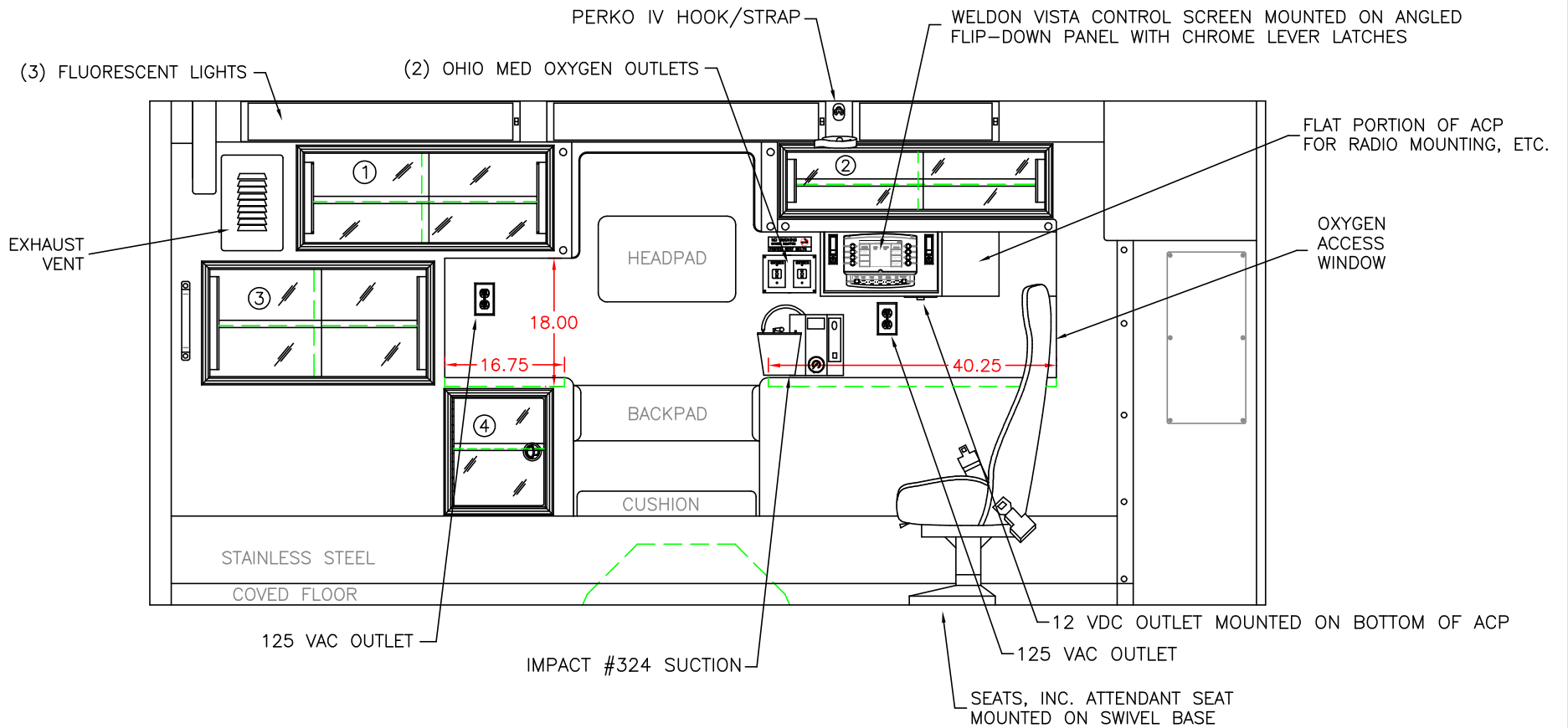
THIS DRAWING IS FOR REPRESENTATIONAL PURPOSES ONLY. DETAILS ARE CONCEPTUAL AND ARE SUBJECT TO CHANGE DURING DESIGN AND CONSTRUCTION  
 DIMENSIONS ARE APPROXIMATE UNLESS NOTED OTHERWISE TO MEET A SPECIFIC CUSTOMER NEED.



2014 CURBSIDE EXTERIOR VIEW  
 BRAUN LIBERTY TYPE-I / FORD F-450 CHASSIS

1:28

DATE:	08 APR 13	DRAWING NO.
DWG.	GLF	REV. NR
		14-LIB-F450-4



COMPARTMENT

#1 DOOR OPENING: 12.50h x 33.75w  
 INSIDE DIMS: 14.25h x 35.50w x 17.25d  
 (1) ADJUSTABLE SHELF

#2 DOOR OPENING: 8.00h x 36.00w  
 INSIDE DIMS: 9.75h x 37.75w x 17.25d  
 (1) ADJUSTABLE SHELF

#3 DOOR OPENING: 15.00h x 30.25w  
 INSIDE DIMS: 17.75h x 32.00w x 17.25d  
 (1) ADJUSTABLE SHELF

#4 DOOR OPENING: 15.25h x 13.25w  
 INSIDE DIMS: 17.00h x 15.00w x 17.25d  
 (1) ADJUSTABLE SHELF  
 LEFT-HINGED ACRYLIC DOOR  
 (1) LOCKING STAINLESS STEEL FLUSH PULL LATCH

CABINETS TO BE ALUMINUM

CABINET SHELF TRACK TO BE RECESSED

MINIMIZE EXPOSED FASTENERS

THIS DRAWING IS FOR REPRESENTATIONAL PURPOSES ONLY. DETAILS ARE CONCEPTUAL AND ARE SUBJECT TO CHANGE DURING DESIGN AND CONSTRUCTION  
 DIMENSIONS ARE APPROXIMATE UNLESS NOTED OTHERWISE TO MEET A SPECIFIC CUSTOMER NEED.

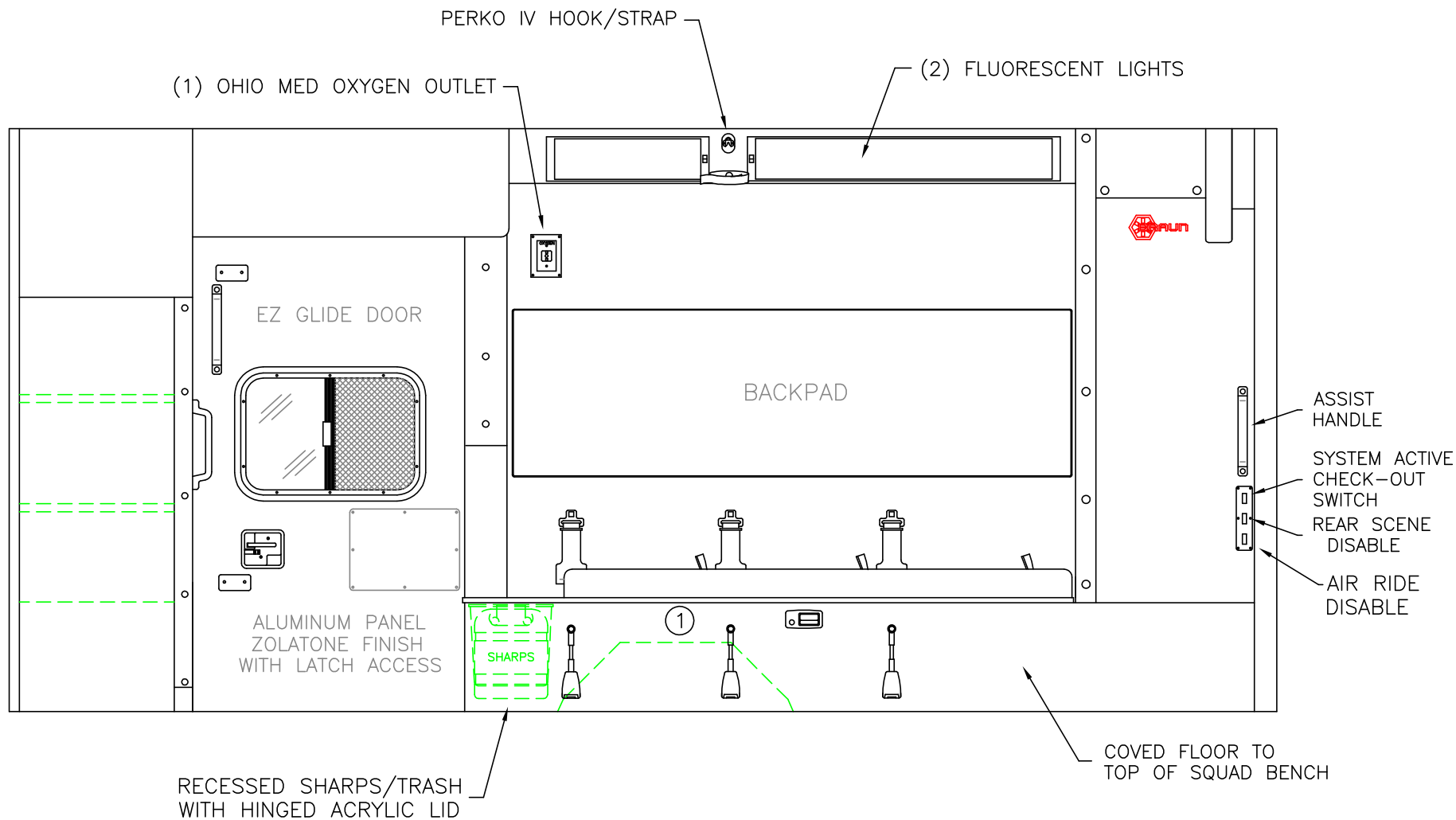


2014 STREETSIDE INTERIOR VIEW  
 BRAUN LIBERTY TYPE-I

1:20

DATE:	08 APR 13
DWG.	GLF
REV.	NR

DRAWING NO.	14-LIB-F450-5
-------------	---------------



#1 INSIDE DIM'S.: 14.50h x 74.75w x 20.00d

CABINETS TO BE ALUMINUM  
MINIMIZE EXPOSED FASTENERS

THIS DRAWING IS FOR REPRESENTATIONAL PURPOSES ONLY. DETAILS ARE CONCEPTUAL AND ARE SUBJECT TO CHANGE DURING DESIGN AND CONSTRUCTION  
DIMENSIONS ARE APPROXIMATE UNLESS NOTED OTHERWISE TO MEET A SPECIFIC CUSTOMER NEED.

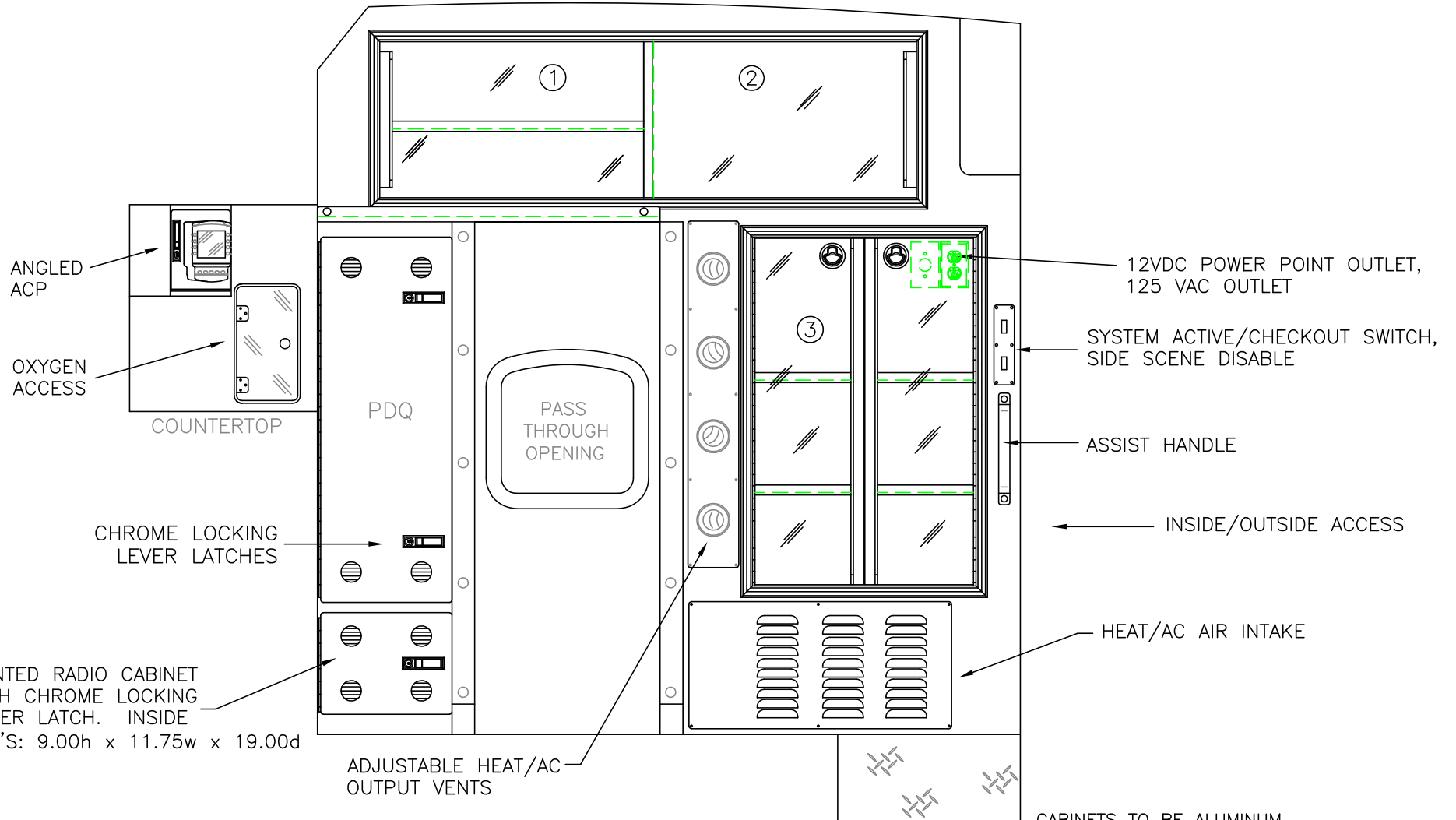


2014 CURBSIDE INTERIOR VIEW  
BRAUN LIBERTY TYPE-I

1:18

DATE:	08 APR 13
DWG.	GLF
REV.	NR

DRAWING NO.	14-LIB-F450-6
-------------	---------------



**COMPARTMENT**

#1-#2 DOOR OPENING: 15.25h x 52.75w  
 INSIDE DIMS: 17.00h x 54.50w x 17.00d  
 PERMANENT DIVIDER (CENTERED)  
 (1) ADJUSTABLE SHELF IN COMPARTMENT #1

#3 DOOR OPENING: 34.25h x 22.00w  
 INSIDE DIMS: 36.75h x 25.75w x 19.00d  
 RECESSED .375" ACRYLIC DOORS WITH FULL LENGTH HANDLES  
 LOCKING STAINLESS STEEL FLUSH PULL LATCHES  
 (2) ADJUSTABLE SHELVES

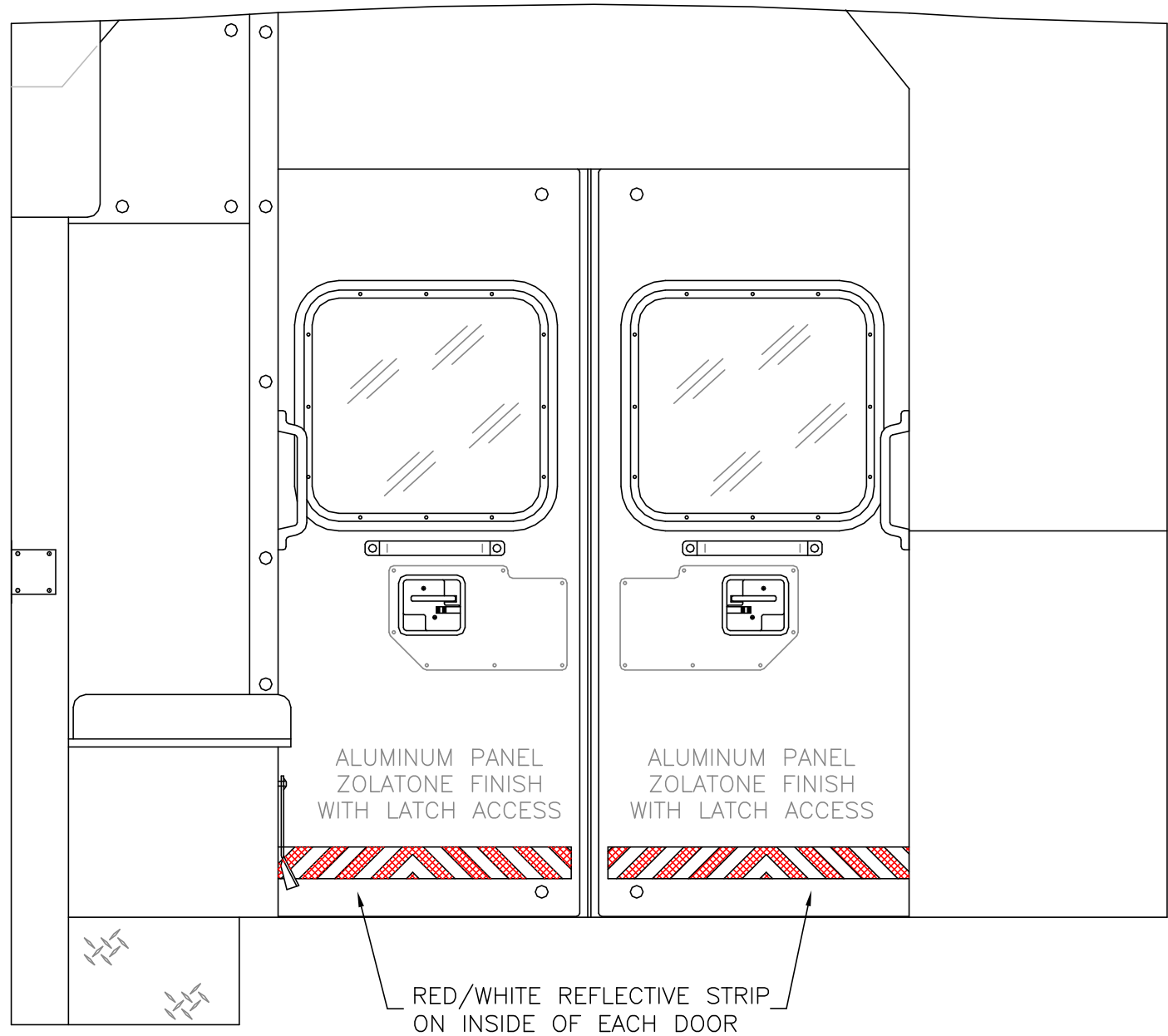
CABINETS TO BE ALUMINUM  
 CABINET SHELF TRACK TO BE RECESSED  
 MINIMIZED EXPOSED FASTENERS

THIS DRAWING IS FOR REPRESENTATIONAL PURPOSES ONLY. DETAILS ARE CONCEPTUAL AND ARE SUBJECT TO CHANGE DURING DESIGN AND CONSTRUCTION  
 DIMENSIONS ARE APPROXIMATE UNLESS NOTED OTHERWISE TO MEET A SPECIFIC CUSTOMER NEED.



2014 PARTITION INTERIOR VIEW  
 BRAUN LIBERTY TYPE-I

DATE:	08 APR 13	DRAWING NO.	14-LIB-F450-7
DWG.	GLF	REV.	



THIS DRAWING IS FOR REPRESENTATIONAL PURPOSES ONLY. DETAILS ARE CONCEPTUAL AND ARE SUBJECT TO CHANGE DURING DESIGN AND CONSTRUCTION DIMENSIONS ARE APPROXIMATE UNLESS NOTED OTHERWISE TO MEET A SPECIFIC CUSTOMER NEED.



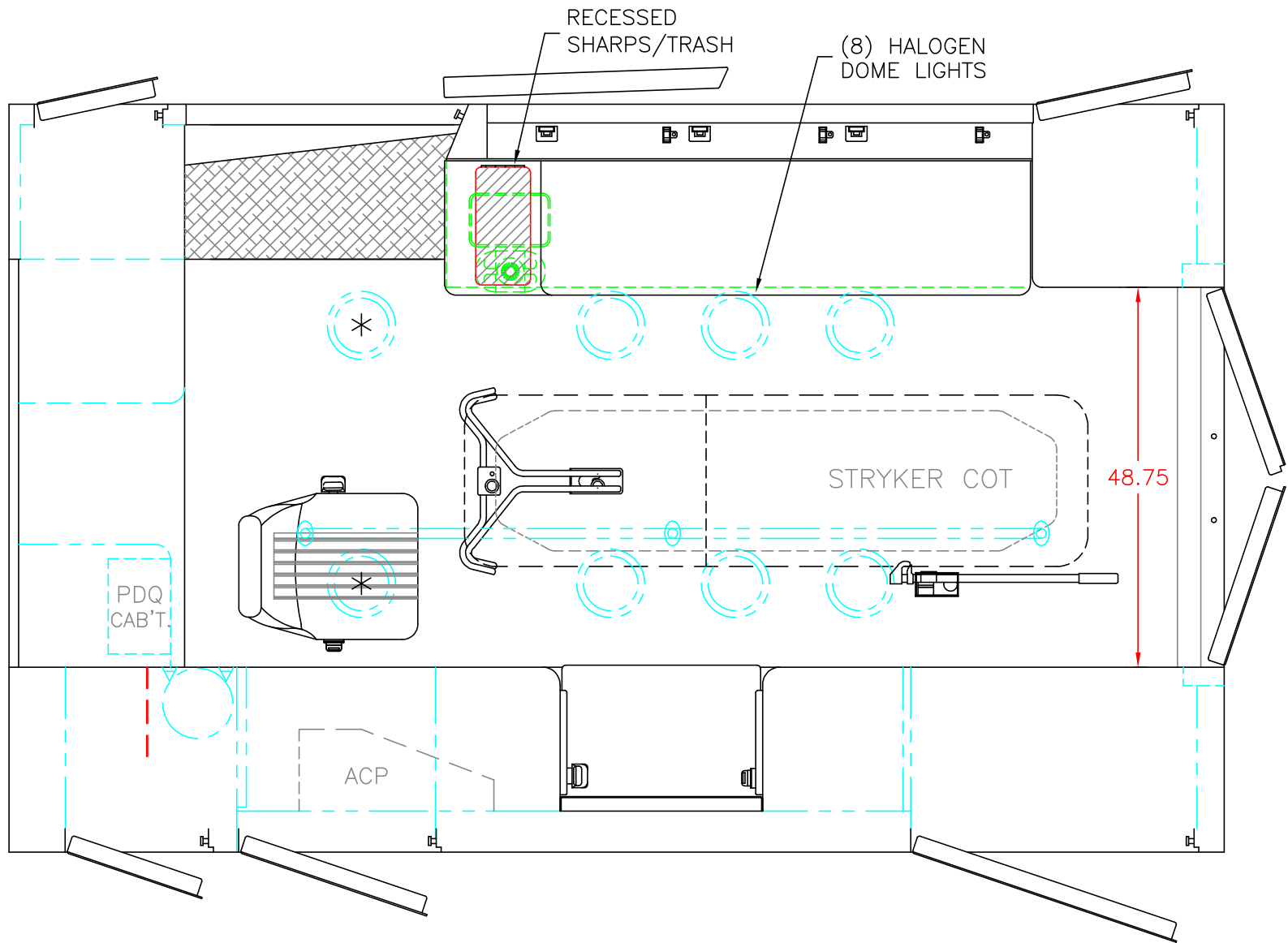
2014 REAR INTERIOR VIEW  
BRAUN LIBERTY TYPE-I

1:12

DATE:	08 APR 13
DWG.	REV.
GLF	NR

DRAWING NO.	14-LIB-F450-8
-------------	---------------





\* (2) ANTENNA BASES LOCATED OUTBOARD OF DOME LIGHTS WITH COAX SERVICE LOOP

STRYKER CENTER MOUNT COT HARDWARE

MODULE WIDTH = 96"

MODULE LENGTH = 156"

MODULE HEAD ROOM = 72"

THIS DRAWING IS FOR REPRESENTATIONAL PURPOSES ONLY. DETAILS ARE CONCEPTUAL AND ARE SUBJECT TO CHANGE DURING DESIGN AND CONSTRUCTION DIMENSIONS ARE APPROXIMATE UNLESS NOTED OTHERWISE TO MEET A SPECIFIC CUSTOMER NEED.



2014 FLOOR INTERIOR VIEW  
BRAUN LIBERTY TYPE-I

DATE:	08 APR 13		DRAWING NO.
DWG.	GLF	REV.	NR
1:20			14-LIB-F450-9