

DIMENSIONS FOR OVERALL HEIGHT AND LENGTH ARE APPROXIMATE

OVERALL HEIGHT = 105"

OVERALL WIDTH WITH RUB

RAILS & FENDERETTES = 95"

(7) WHELEN 600 SUPER LED WITH CLEAR LENSES  
RED / RED / RED / WHITE / RED / RED / RED

(5) TECNIQ S330 AMBER  
MINI-LED MARKER LIGHTS

OEM POWER  
ADJUSTABLE  
MIRRORS

FLASHING HEADLIGHTS W/  
DAYTIME RUNNING LIGHTS

HIDDEN UNLOCK SWITCH  
IN GRILLE AREA

SURFACE MOUNT WHELEN  
500 SERIES RED SUPER  
LED WITH CLEAR LENS

WHELEN 500 SERIES  
RED LED  
SURFACE MOUNTED  
ON ANGLED PART  
OF CHASSIS GRILLE.  
LIGHTS TO HAVE  
CLEAR LENSES

OEM TOW LOOPS

WHELEN SA315  
100-WATT SIREN  
SPEAKERS WITHIN  
THE BUMPER

THIS DRAWING IS FOR REPRESENTATIONAL PURPOSES ONLY. DETAILS ARE CONCEPTUAL AND ARE SUBJECT TO CHANGE DURING DESIGN AND CONSTRUCTION  
DIMENSIONS ARE APPROXIMATE UNLESS NOTED OTHERWISE TO MEET A SPECIFIC CUSTOMER NEED.

BRAUN TYPE-I  
SIGNATURE SERIES



2014 FRONT EXTERIOR VIEW  
SIGNATURE SERIES-I / F-350 CHASSIS

DATE:  
08 APR 13

DWG. REV.  
GLF NR

DRAWING NO.  
14-SS-F350-1

1:18

DIMENSIONS FOR OVERALL HEIGHT AND LENGTH ARE APPROXIMATE  
 OVERALL HEIGHT = 105"  
 OVERALL WIDTH WITH RUB  
 RAILS & FENDERETTES = 95"  
 FLOOR HEIGHT = 31"

(5) WHELEN 600 SUPER LED WARNING LIGHTS,  
 (2) WHELEN 600 CLEAR HALOGEN LOAD LIGHTS:  
 RED / RED / LOAD / AMBER / LOAD / RED / RED  
 ALL WITH CLEAR LENSES

(5) TECNIQ S330 RED  
 MINI-LED MARKER LIGHTS

(2) WHELEN 900 RED  
 SUPER LED LIGHTS  
 WITH CLEAR LENSES

CAST PRODUCTS  
 DOOR GRABBERS

LED LICENSE  
 PLATE LIGHT

ONE (1) EACH SIDE  
 WHELEN  
 600 LED BRAKE/TAIL,  
 600 LED TURN  
 600 HALOGEN BACK-UP  
 LIGHTS AS FAR OUTBOARD  
 AS POSSIBLE.

MUD FLAPS

COT PROTECTOR  
 ON STEP EDGE

INDEPENDENT BUMPER WITH  
 NON-SKID FLIP-UP CENTER  
 STEP AND COT PROTECTOR  
 ON STEP EDGE.

NOT TO HAVE AIR-RIDE

THIS DRAWING IS FOR REPRESENTATIONAL PURPOSES ONLY. DETAILS ARE CONCEPTUAL AND ARE SUBJECT TO CHANGE DURING DESIGN AND CONSTRUCTION  
 DIMENSIONS ARE APPROXIMATE UNLESS NOTED OTHERWISE TO MEET A SPECIFIC CUSTOMER NEED.

BRAUN TYPE-I  
 SIGNATURE SERIES



2014 REAR EXTERIOR VIEW  
 SIGNATURE SERIES-I / F-350

DATE:  
 08 APR 13  
 DWG. GLF REV. NR

DRAWING NO.  
 14-SS-F350-2

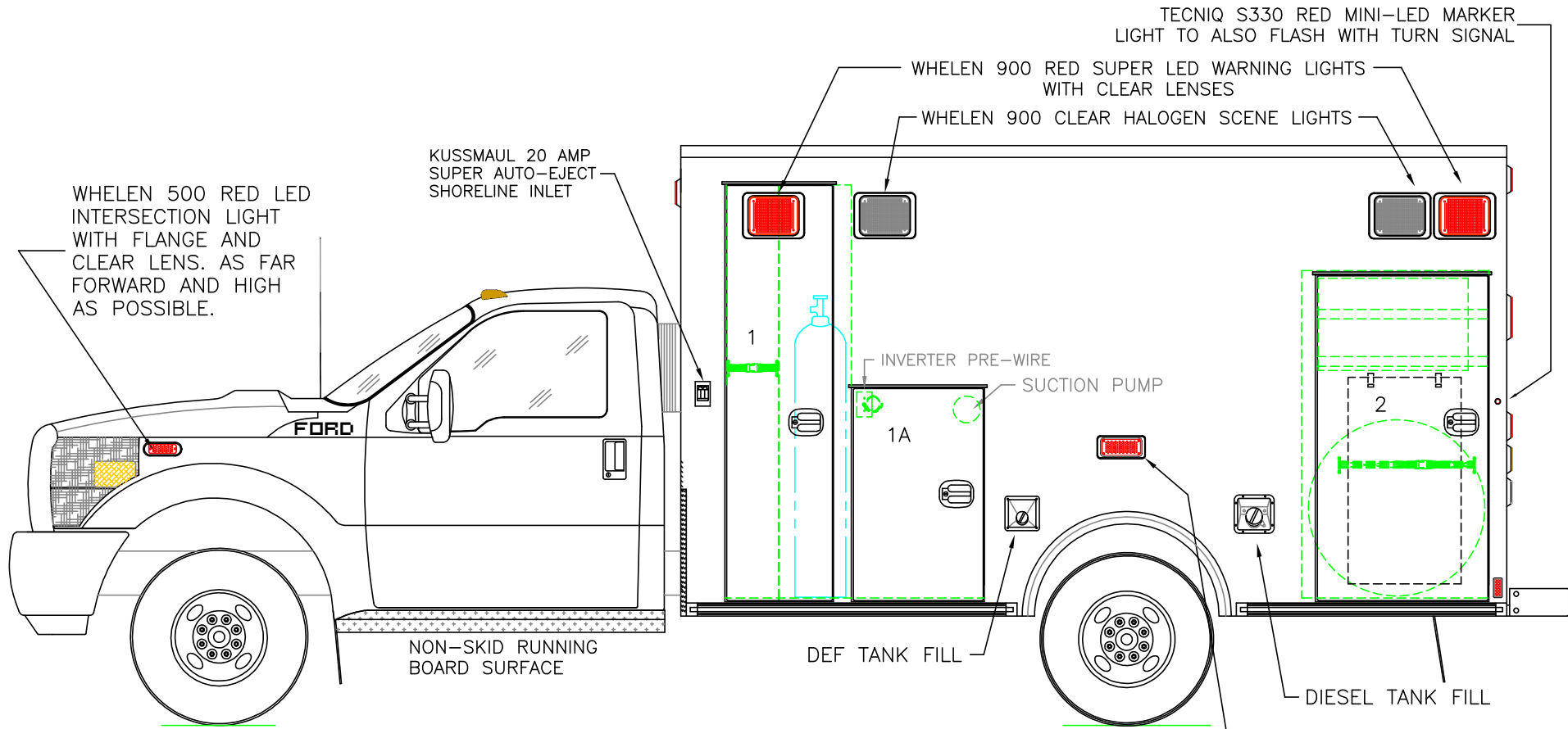
1:16

DIMENSIONS FOR OVERALL HEIGHT AND LENGTH ARE APPROXIMATE

OVERALL HEIGHT = 105"

OVERALL LENGTH = 282.5"

MODULE LENGTH = 150"



COMPARTMENT  
O.S.S #1

CLEAR OPENING: 73.75h x 16.00w  
 INSIDE DIMS: 75.00h x 22.75w x 18.50d  
 OXYGEN STORAGE ON RIGHT SIDE OF VERTICAL DIVIDER  
 DIVIDER DEPTH = 8" TO ALLOW ALTERNATE STAIR  
 CHAIR STORAGE OUTBOARD OF OXYGEN  
 (1) STRAP ON LEFT SIDE OF DIVIDER

O.S.S #1A

CLEAR OPENING: 37.50h x 20.75w  
 INSIDE DIM'S.: 42.50h x 24.00w x 18.50d

O.S.S #2

CLEAR OPENING: 57.75h x 28.00w  
 INSIDE DIM'S.: 59.50h x 34.00w x 18.50d  
 INSIDE/OUTSIDE ACCESS  
 (2) ADJUSTABLE SHELVES: UPPER=FULL DEPTH; LOWER=REDUCED  
 DEPTH DUE TO STAIR CHAIR ON INSIDE OF DOOR  
 MOUNTING HOOKS AND STRAP ON INSIDE OF DOOR FOR  
 STRYKER 6252 OR FERNO EZ-GLIDE STAIR CHAIR  
 OPTIONAL SPARE TIRE STORAGE (MOUNT NOT INCLUDED AS STANDARD)  
 NOTE: STAIR CHAIR AND SPARE STORAGE WILL NOT FIT AT SAME TIME

THIS DRAWING IS FOR REPRESENTATIONAL PURPOSES ONLY. DETAILS ARE CONCEPTUAL AND ARE SUBJECT TO CHANGE DURING DESIGN AND CONSTRUCTION  
 DIMENSIONS ARE APPROXIMATE UNLESS NOTED OTHERWISE TO MEET A SPECIFIC CUSTOMER NEED.

BRAUN TYPE-I  
SIGNATURE SERIES

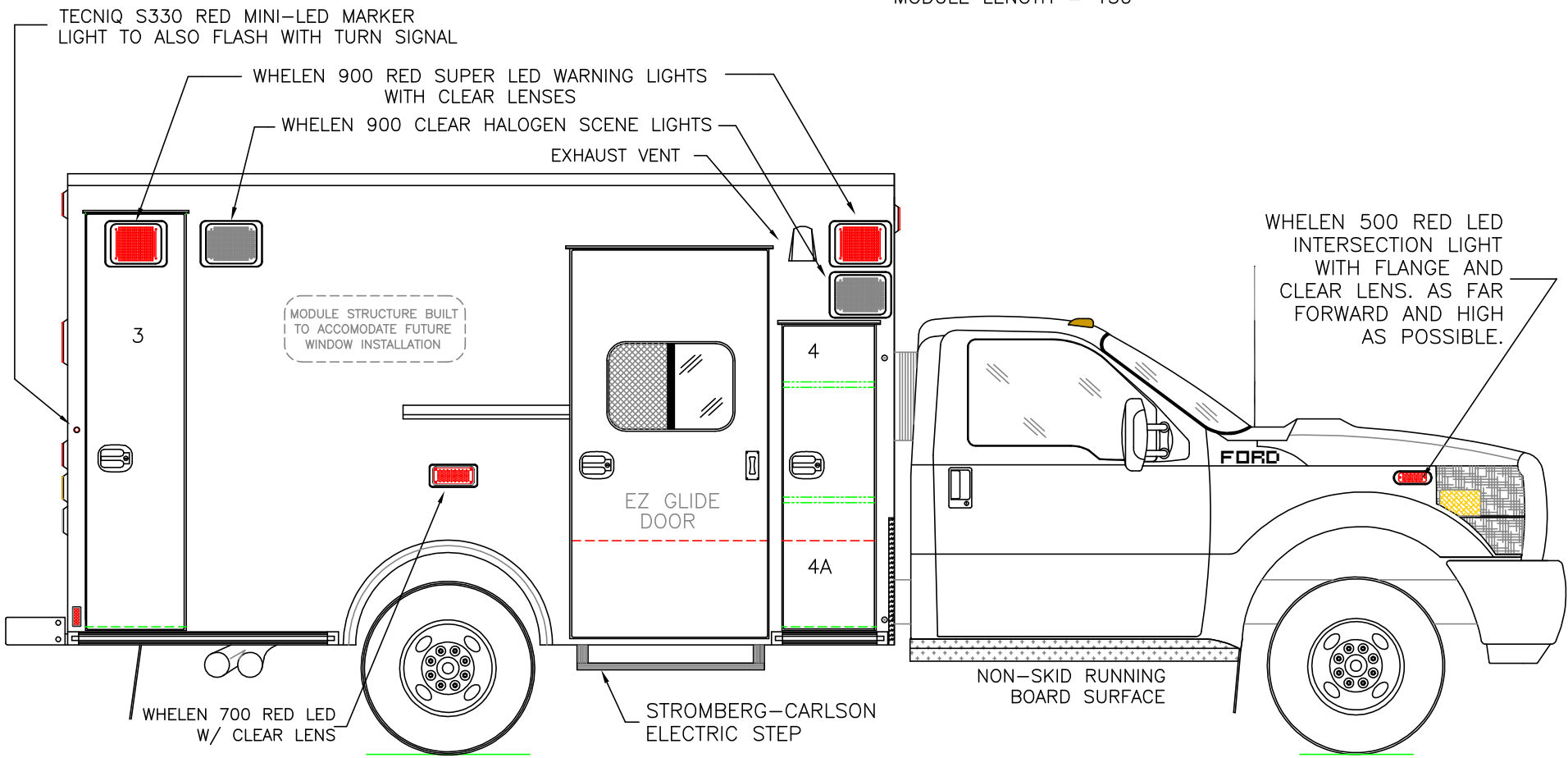


2014 STREETSIDE EXTERIOR VIEW  
SIGNATURE SERIES-I / F-350 CHASSIS

DATE: 08 APR 13  
 DWG. REV. GLF NR  
 1:28

DRAWING NO.  
14-SS-F350-3

DIMENSIONS FOR OVERALL HEIGHT AND LENGTH ARE APPROXIMATE  
 OVERALL HEIGHT = 105"  
 OVERALL LENGTH = 282.5"  
 MODULE LENGTH = 150"



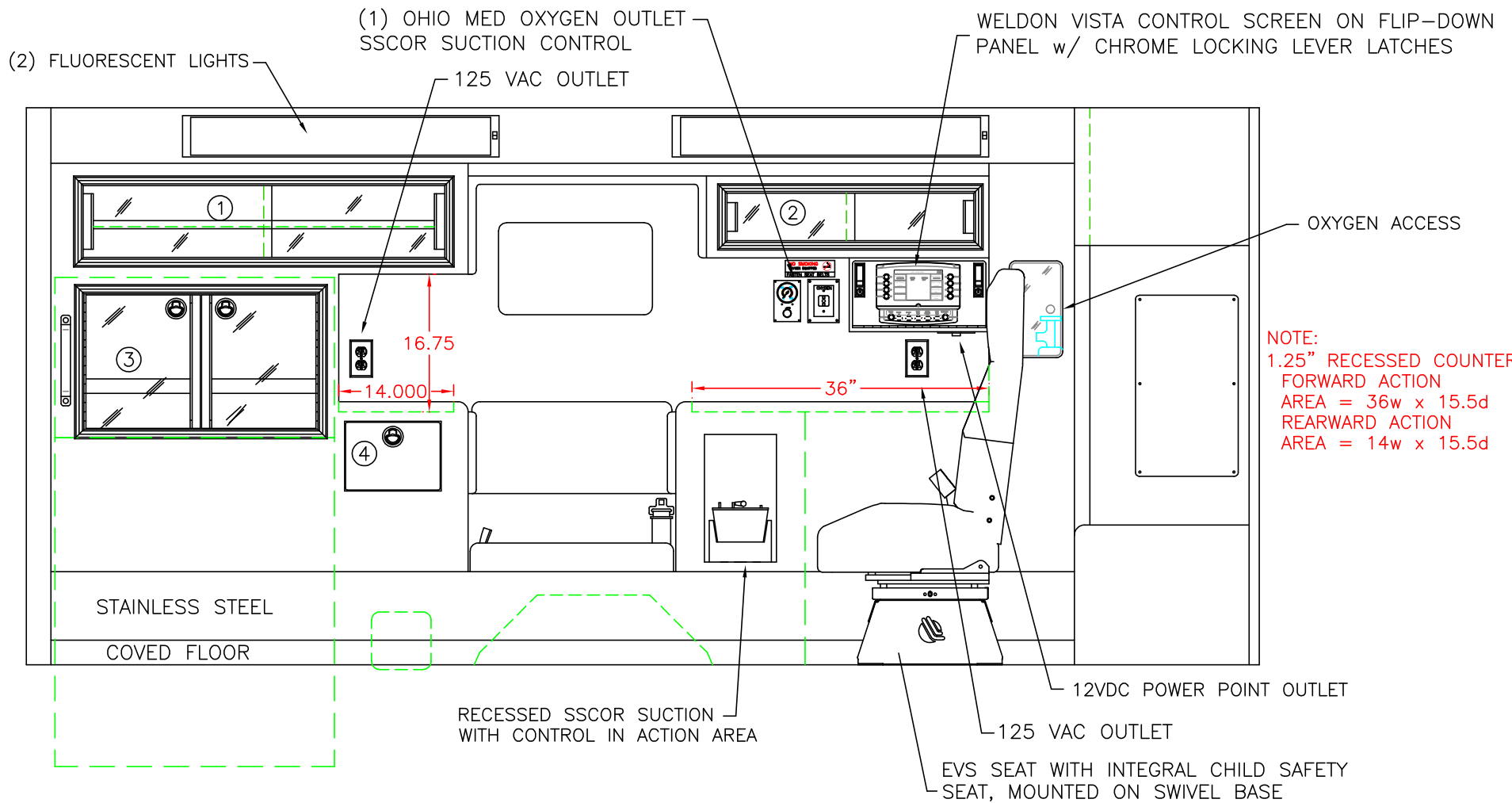
MODULE STRUCTURE BUILT TO ACCOMMODATE FUTURE WINDOW INSTALLATION

WHELEN 500 RED LED INTERSECTION LIGHT WITH FLANGE AND CLEAR LENS. AS FAR FORWARD AND HIGH AS POSSIBLE.

O.S.S #3  
 CLEAR OPENING: 73.75h x 15.00w  
 INSIDE DIM'S.: 75.00h x 18.00w x 18.50d  
 BACKBOARD/SCOOP STORAGE

O.S.S #4  
 CLEAR OPENING: 53.75h x 15.50w  
 INSIDE DIM'S.: SEE PARTITION INTERIOR VIEW  
 INSIDE/OUTSIDE ACCESS  
 #4A CLEAR OPENING: 15.50 x 15.50w x 17.00d

THIS DRAWING IS FOR REPRESENTATIONAL PURPOSES ONLY. DETAILS ARE CONCEPTUAL AND ARE SUBJECT TO CHANGE DURING DESIGN AND CONSTRUCTION DIMENSIONS ARE APPROXIMATE UNLESS NOTED OTHERWISE TO MEET A SPECIFIC CUSTOMER NEED.



COMPARTMENT:

- #1 DOOR OPENING: 8.75h x 44.00w  
INSIDE DIMS: 10.50h x 45.50w x 16.25d  
(1) ADJUSTABLE SHELF
- #2 DOOR OPENING: 5.75h x 30.00w  
INSIDE DIMS: 8.50h x 31.75w x 15.00d

- #3 DOOR OPENING: 16.50h x 27.50w  
INSIDE/OUTSIDE COMPARTMENT ACCESS  
HINGED ACRYLIC DOORS  
STAINLESS STEEL FLUSH PULL LATCHES

- #4 PULL-OUT DRAWER  
INSIDE DIMS: 7.00h x 10.50w x 15.75d  
STAINLESS STEEL FLUSH PULL LATCH

CABINETS TO BE ALUMINUM

THIS DRAWING IS FOR REPRESENTATIONAL PURPOSES ONLY. DETAILS ARE CONCEPTUAL AND ARE SUBJECT TO CHANGE DURING DESIGN AND CONSTRUCTION DIMENSIONS ARE APPROXIMATE UNLESS NOTED OTHERWISE TO MEET A SPECIFIC CUSTOMER NEED.

BRAUN TYPE-I  
SIGNATURE SERIES

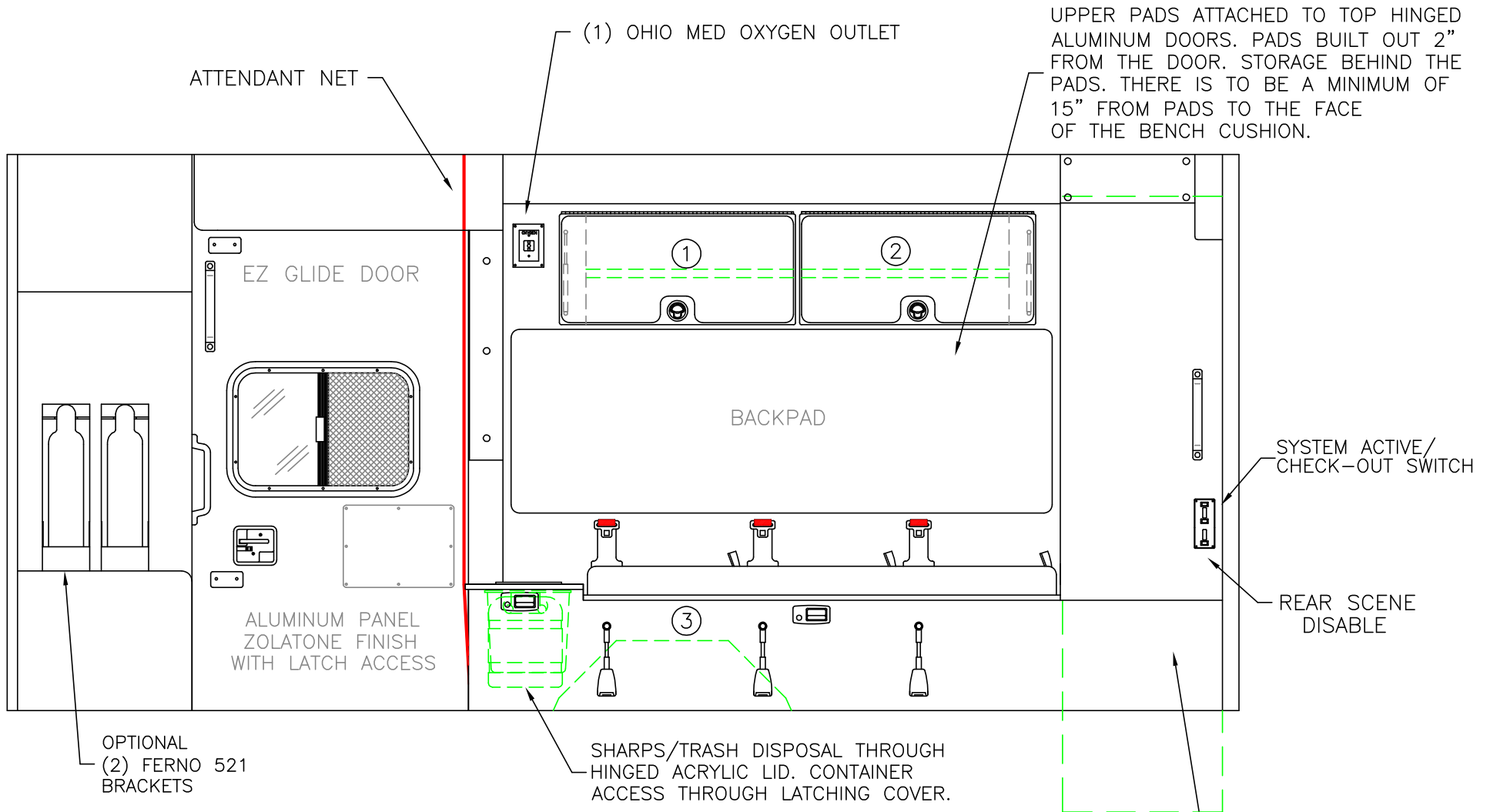


2014 STREETSIDE INTERIOR  
SIGNATURE SERIES-I

1:18

DATE:	08 APR 13	
DWG.	GLF	REV. NR

DRAWING NO.  
14-SS-F350-5



UPPER PADS ATTACHED TO TOP HINGED ALUMINUM DOORS. PADS BUILT OUT 2" FROM THE DOOR. STORAGE BEHIND THE PADS. THERE IS TO BE A MINIMUM OF 15" FROM PADS TO THE FACE OF THE BENCH CUSHION.

COMPARTMENT

#1-#2 DOOR OPENING: 13.50h x 25.25w  
 INSIDE DIMS: 13.50h x 25.25w x 4.50d  
 (1) ADJUSTABLE SHELF PER CABINET  
 TOP HINGED ALUMINUM DOORS w/ PADS  
 STAINLESS STEEL FLUSH PULL LATCHES

#3 INSIDE DIMS: 14.25h x 72.00w x 18.50d

CABINETS TO BE ALUMINUM

THIS DRAWING IS FOR REPRESENTATIONAL PURPOSES ONLY. DETAILS ARE CONCEPTUAL AND ARE SUBJECT TO CHANGE DURING DESIGN AND CONSTRUCTION DIMENSIONS ARE APPROXIMATE UNLESS NOTED OTHERWISE TO MEET A SPECIFIC CUSTOMER NEED.

BRAUN TYPE-I  
SIGNATURE SERIES



2014 CURBSIDE INTERIOR VIEW  
SIGNATURE SERIES-I

DATE:  
08 APR 13  
DWG. AAB REV. NR

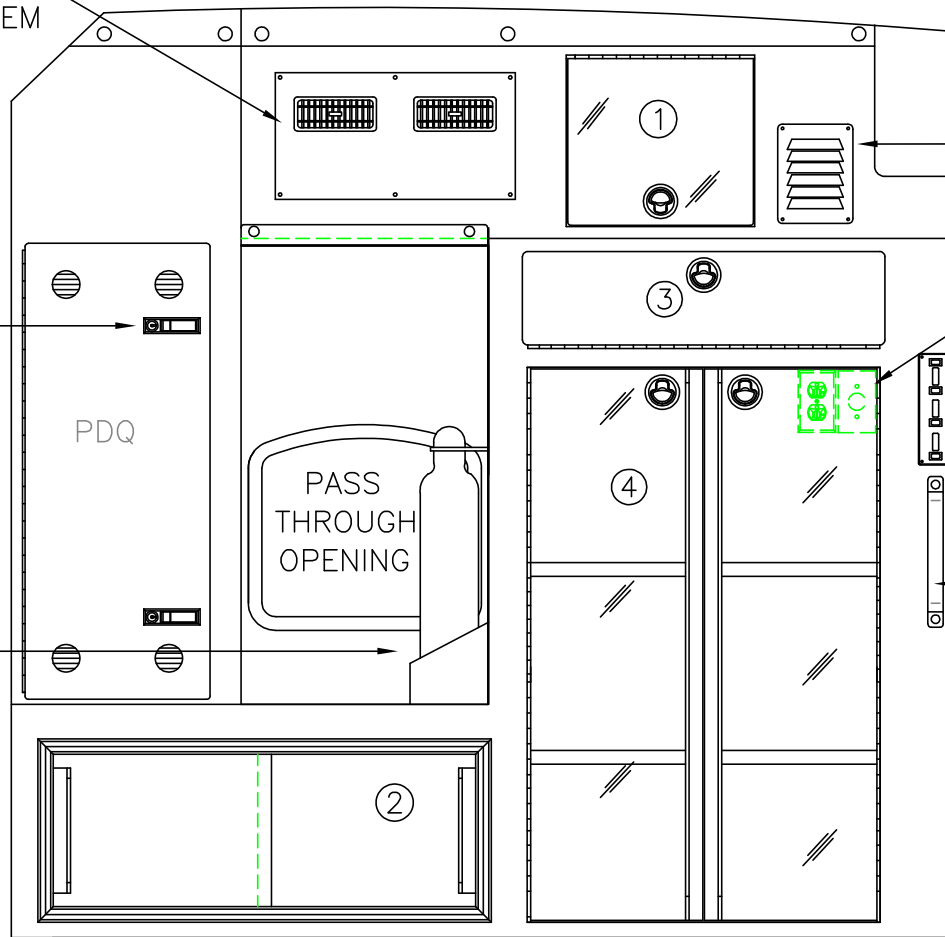
DRAWING NO.  
14-SS-F350-6

1:18

PROAIR 935 HEAT/COOL SYSTEM

CHROME LOCKING LEVER LATCHES

OPTIONAL STORAGE FOR (2) FERNO 521 BRACKETS



EXHAUST VENT LOCATION

12VDC POWER POINT OUTLET  
125VAC OUTLET

SYSTEM ACTIVE/CHECK-OUT SWITCH,  
SIDE SCENE DISABLE/POWER LOCKS

ASSIST HANDLE

INSIDE/OUTSIDE ACCESS

COMPARTMENT

#1 DOOR OPENING: 12.25h x 13.75w  
INSIDE DIMS: 12.25h x 13.75w x 19.75d  
HINGED ACRYLIC DOOR  
STAINLESS STEEL FLUSH PULL LATCH

#2 DOOR OPENING: 11.00h x 30.50w  
INSIDE DIMS: 16.00h x 34.00w x 14.00d  
ACTUAL DIMENSIONS MAY VARY  
ALUMINUM SLIDING DOORS

#3 DROP-DOWN HINGED ALUMINUM DOOR  
WITH STAINLESS STEEL FLUSH PULL LATCH  
OPENING DIMS: 6.50h x 26.00w  
INSIDE DIMS: 7.50h x 26.00w x 20.00d

#4 DOOR OPENING: 40.50h x 25.25w  
INSIDE DIMS: 41.00h x 27.75w x 20.00d  
RECESSED .375" ACRYLIC DOORS WITH FULL LENGTH HANDLES  
STAINLESS STEEL FLUSH PULL LATCHES  
(2) ADJUSTABLE SHELVES

CABINETS TO BE ALUMINUM

THIS DRAWING IS FOR REPRESENTATIONAL PURPOSES ONLY. DETAILS ARE CONCEPTUAL AND ARE SUBJECT TO CHANGE DURING DESIGN AND CONSTRUCTION  
DIMENSIONS ARE APPROXIMATE UNLESS NOTED OTHERWISE TO MEET A SPECIFIC CUSTOMER NEED.

BRAUN TYPE-I  
SIGNATURE SERIES



2014 PARTITION INTERIOR VIEW  
SIGNATURE SERIES-I

1:14

DATE:	08 APR 13
DWG.	GLF
REV.	NR

DRAWING NO.	14-SS-F350-7
-------------	--------------

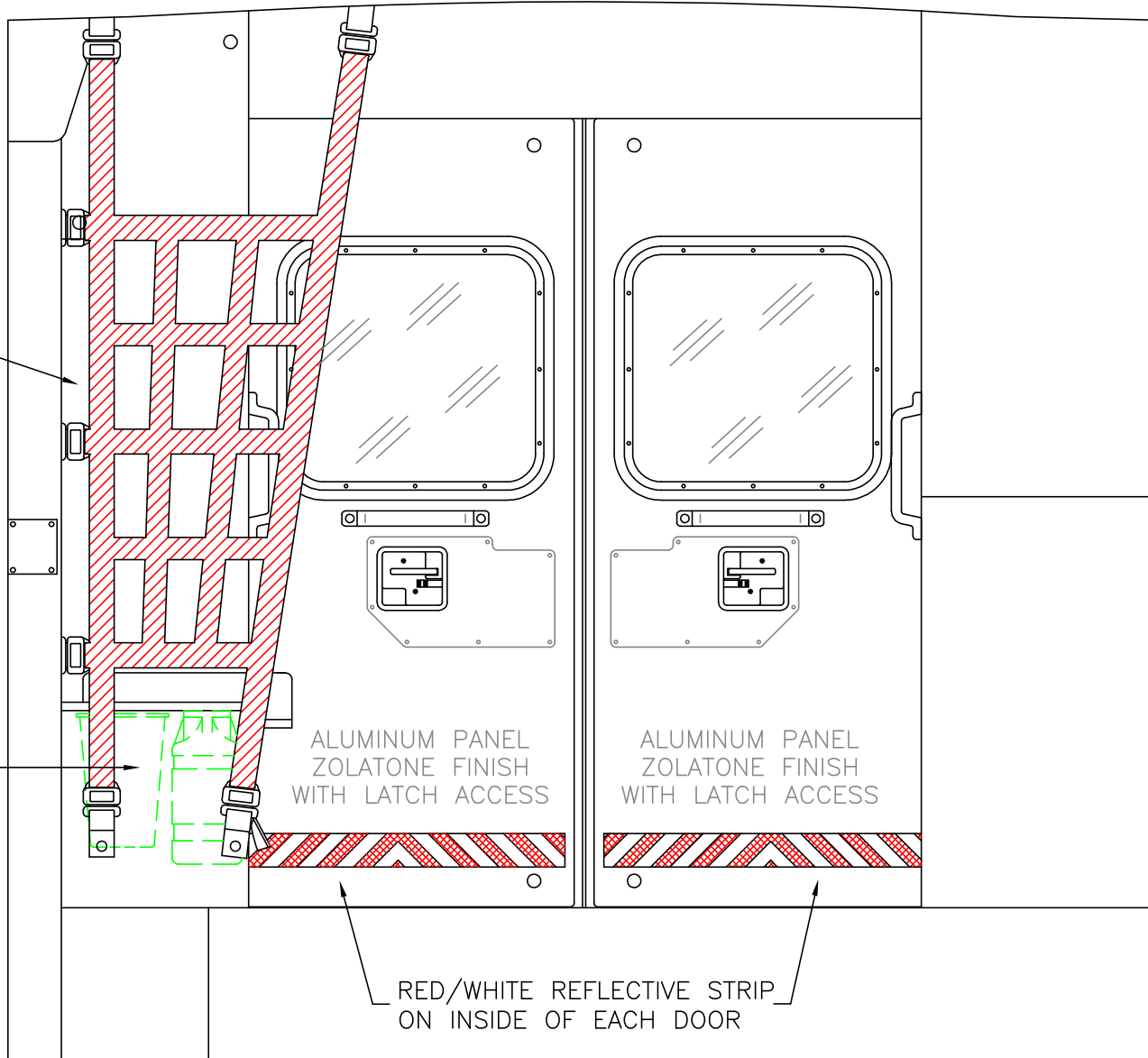
ATTENDANT NET

RECESSED SHARPS/WASTE

ALUMINUM PANEL  
ZOLATONE FINISH  
WITH LATCH ACCESS

ALUMINUM PANEL  
ZOLATONE FINISH  
WITH LATCH ACCESS

RED/WHITE REFLECTIVE STRIP  
ON INSIDE OF EACH DOOR



THIS DRAWING IS FOR REPRESENTATIONAL PURPOSES ONLY. DETAILS ARE CONCEPTUAL AND ARE SUBJECT TO CHANGE DURING DESIGN AND CONSTRUCTION DIMENSIONS ARE APPROXIMATE UNLESS NOTED OTHERWISE TO MEET A SPECIFIC CUSTOMER NEED.

BRAUN TYPE-I  
SIGNATURE SERIES



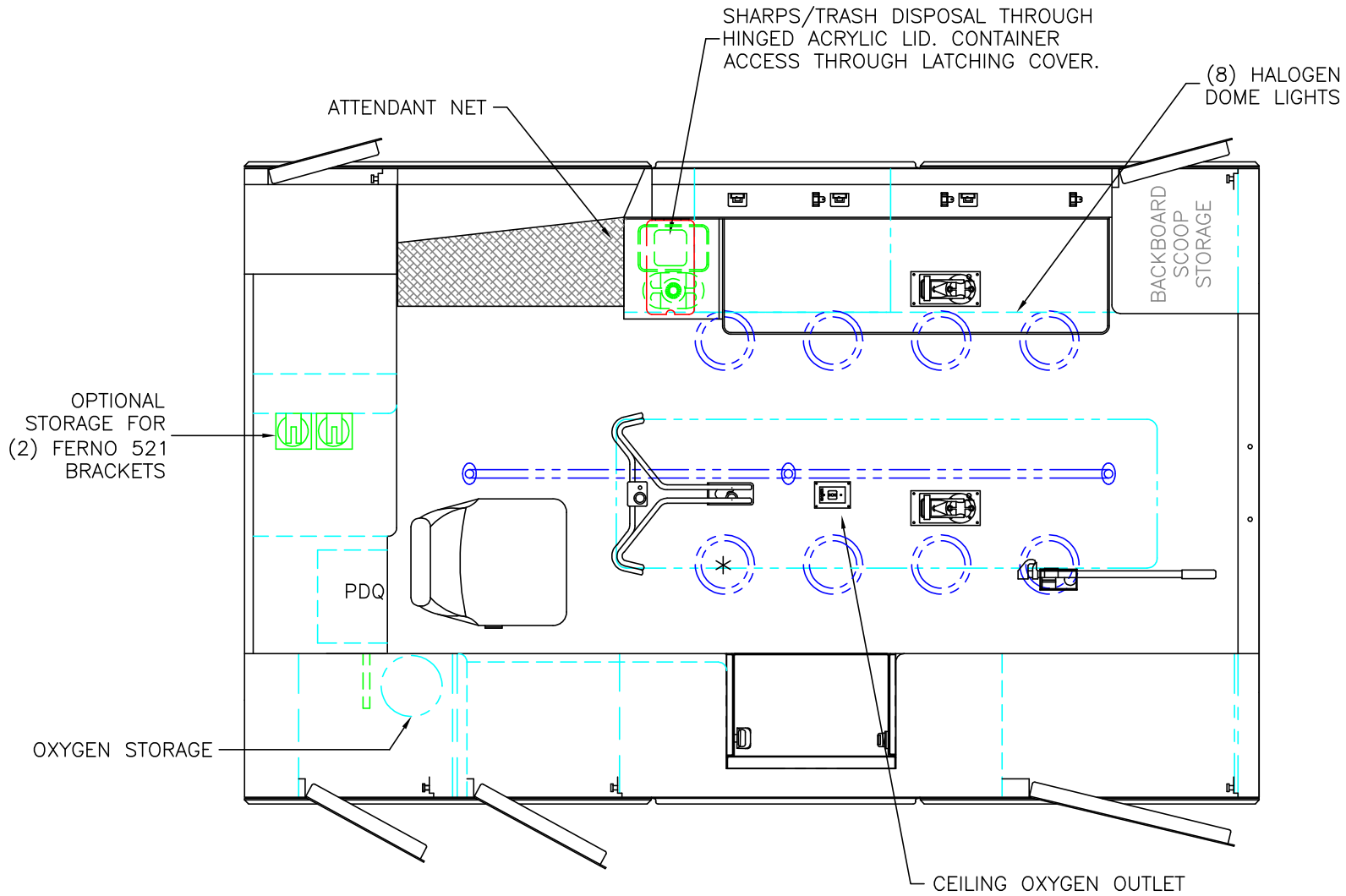
2014 REAR INTERIOR VIEW  
SIGNATURE SERIES-I

1:13

DATE:	08 APR 13
DWG.	GLF
REV.	NR

DRAWING NO.	14-SS-F350-8
-------------	--------------





\* (1) ANTENNA BASE LOCATED OUTBOARD OF DOME LIGHT WITH COAX SERVICE LOOP

STRYKER CENTER MOUNT COT HARDWARE

 = (2) RECESSED CAST PRODUCTS CEILING IV HANGERS

HEAD ROOM = 68"  
 OVERALL WIDTH WITH RUB  
 RAILS & FENDERETTES = 95"  
 MODULE LENGTH = 150"

THIS DRAWING IS FOR REPRESENTATIONAL PURPOSES ONLY. DETAILS ARE CONCEPTUAL AND ARE SUBJECT TO CHANGE DURING DESIGN AND CONSTRUCTION DIMENSIONS ARE APPROXIMATE UNLESS NOTED OTHERWISE TO MEET A SPECIFIC CUSTOMER NEED.

BRAUN TYPE-I  
SIGNATURE SERIES



2014 FLOOR VIEW  
SIGNATURE SERIES-I

1:24

DATE:	08 APR 13	
DWG.	GLF	REV. NR

DRAWING NO.  
14-SS-F350-9