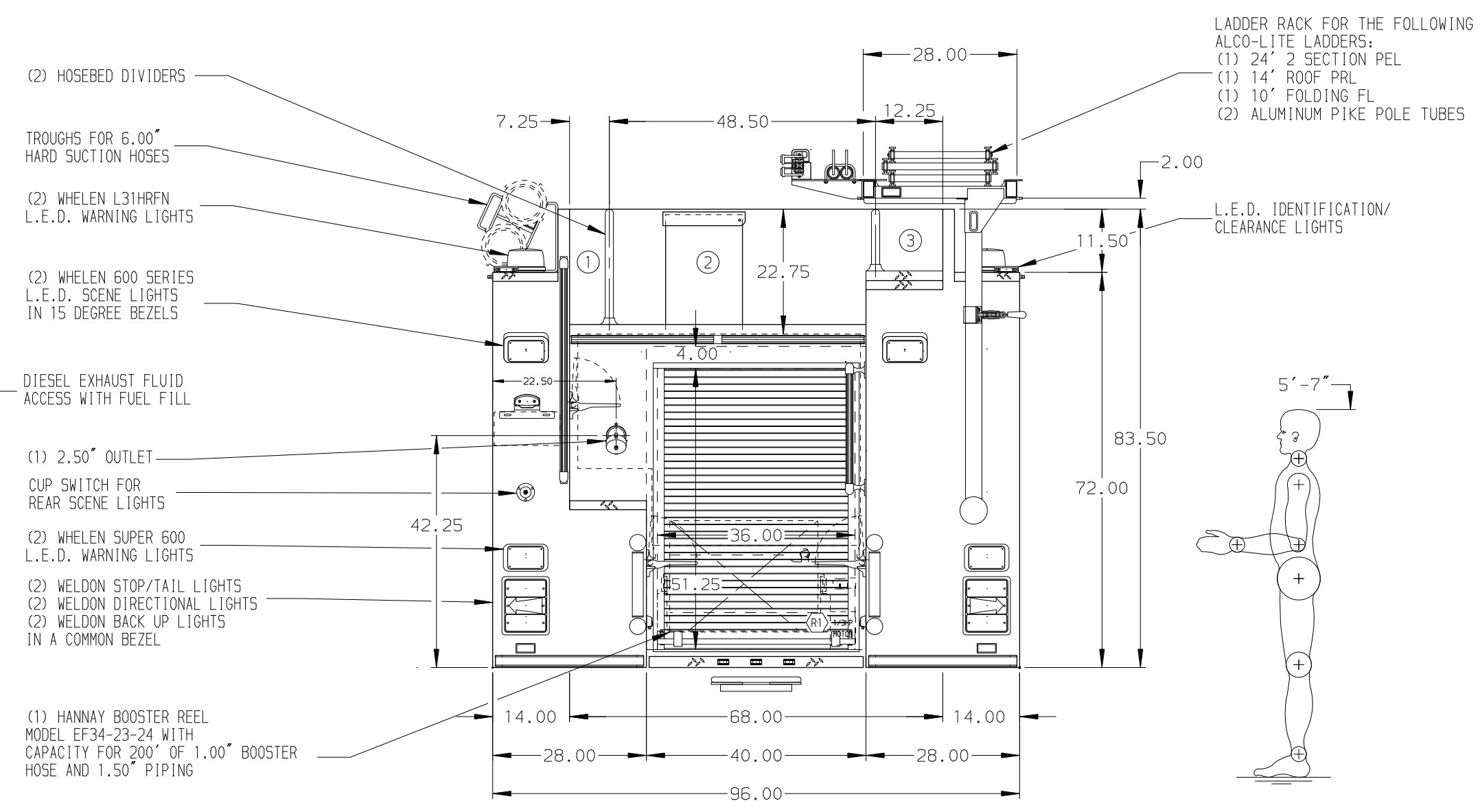
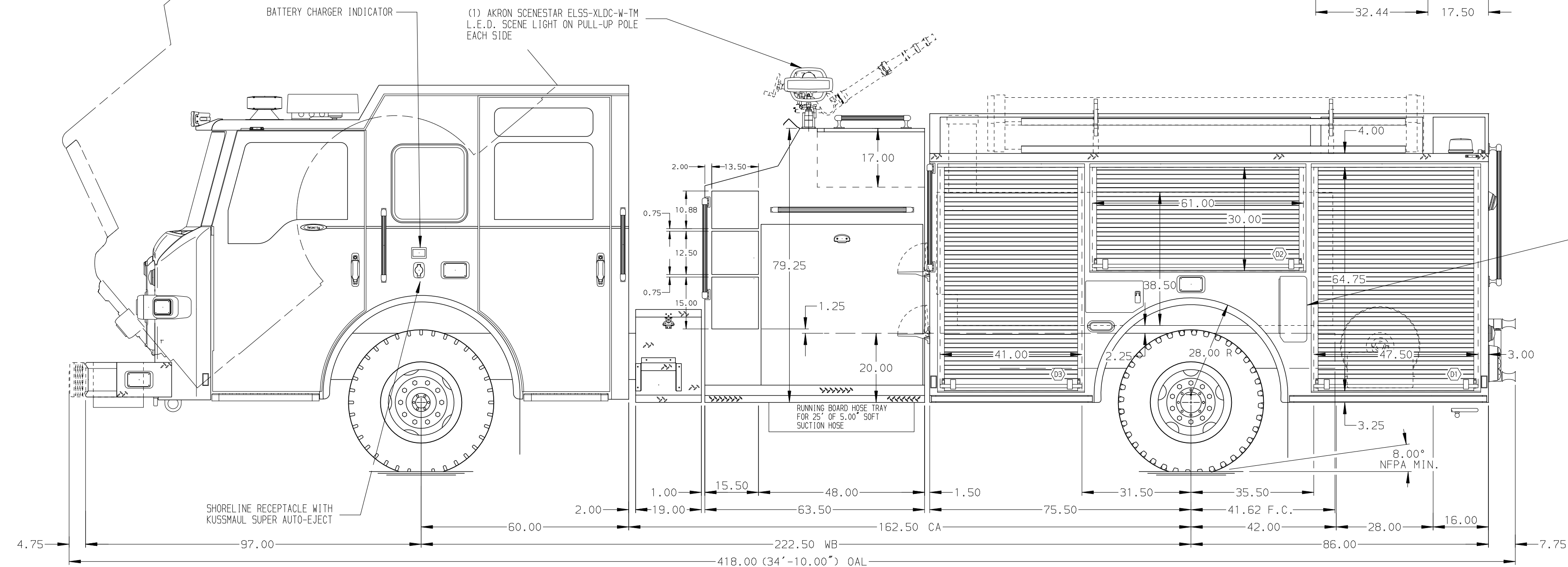


- HOSEBED CAPACITIES
- ① 200' OF 1.50" D.J. POLY HOSE
  - ② 1500' OF 2.50" D.J. POLY HOSE
  - ③ 200' OF 1.50" D.J. POLY HOSE



ALUMINUM BODY

NOTE  
DIMENSIONS SHOWN ARE APPROXIMATE AND ARE SUBJECT TO MINOR DEVIATIONS AS MAY OCCUR OR BE NECESSARY IN CONSTRUCTION. MINOR DETAILS NOT SHOWN.

1. ALUMINUM TREADPLATE EXTERIOR REAR WALL OF CAB
2. MOUNTING BASE FOR ANTENNA LOCATED PER SHOP ORDER
3. PERIMETER SCENE LIGHTS LOCATED PER SHOP ORDER
4. PIERCE L.E.D. DUAL COMPARTMENT LIGHT STRIPS LOCATED PER SHOP ORDER
5. PAINTED SHELF TRACKS LOCATED IN COMPARTMENTS D1,D2,D3,P1,P2,P3,R1
6. ONE FULL WIDTH/DEPTH PAINTED ADJUSTABLE SHELF IN COMPARTMENTS D1,D3,P1,P2,P3,R1
7. ONE FLOOR MOUNTED SLIDE-OUT TRAY IN COMPARTMENT D1,P1,P3
8. AIR INLET WITH MILTON "M" FEMALE FITTING LOCATED ON D.S. PUMP PANEL
9. BATTERY CHARGER/COMPRESSOR LOCATED IN EMS COMPARTMENT
10. ONE SWING-OUT ALUMINUM TOOLBOARD W/PEGBOARD PATTERN LOCATED IN COMPARTMENT D2

REV	DATE	BY	CH	VELOCITY
27MAR15	JWO	TWH		PIERCE
26FEB15	JWO	TWH		MODEL

		JOB NO.	28175
		SCALE	DATE
TITLE	1500-D-750P, 161,FDLER D.S., FULL HEIGHT & DEPTH P.S. (3) SPD-LAYS, DELUGE, LADDER RACK		
FOR	ROCKMART FIRE DEPARTMENT ROCKMART, GEORGIA		
DWG NO.	28175AD		
CHECKED BY	MNE	DRAWN BY	JWO
SHEET NO.	1 OF 1	CHECKED BY	MNE