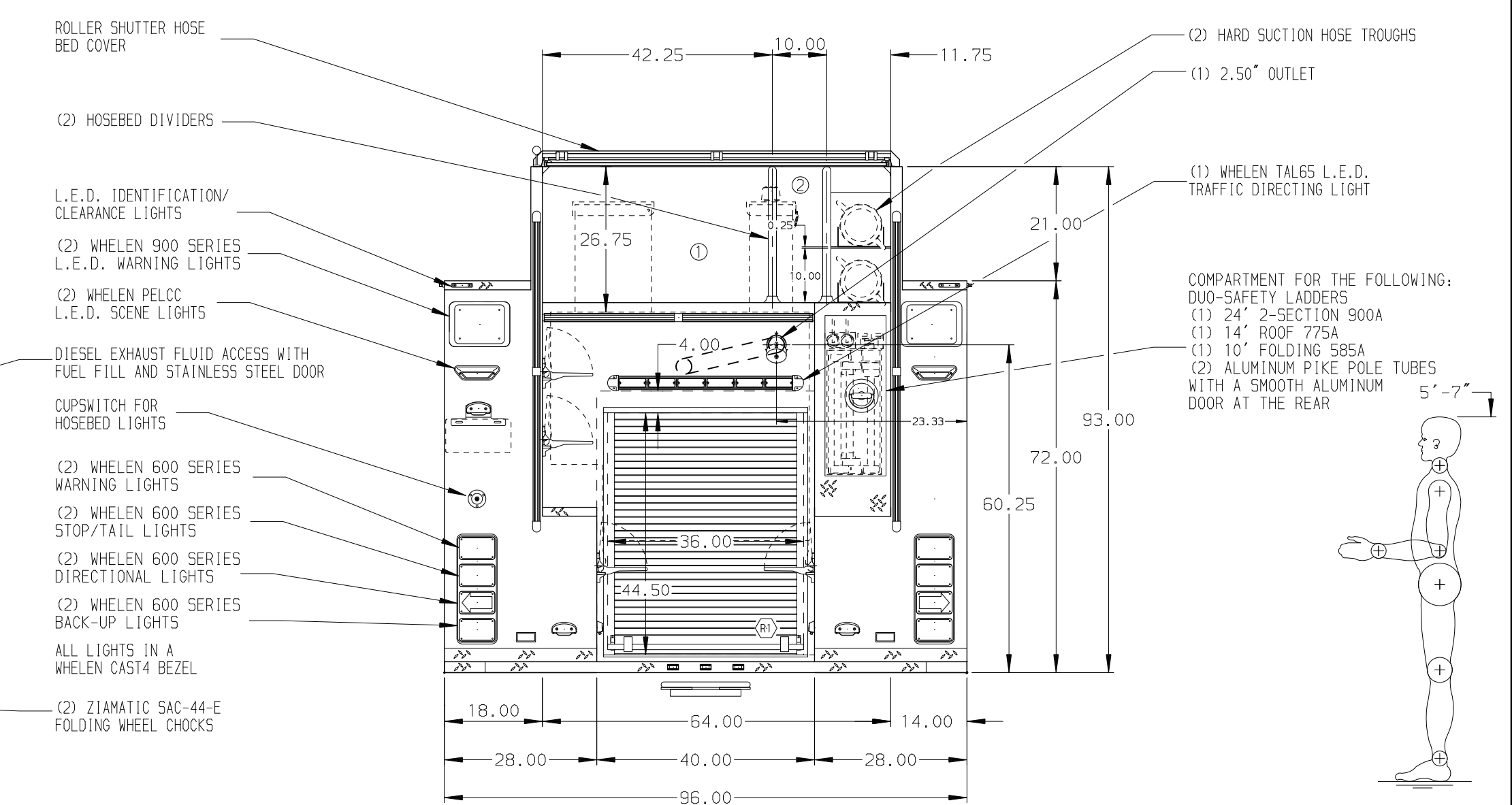


HOSEBED CAPACITIES

① 1000' OF 5.00" D.J. HOSE

② 250' OF 2.50" D.J. HOSE



ALUMINUM BODY

FRONTAL IMPACT PROTECTION

NOTE
 DIMENSIONS SHOWN ARE APPROXIMATE AND ARE SUBJECT TO MINOR DEVIATIONS AS MAY OCCUR OR BE NECESSARY IN CONSTRUCTION. MINOR DETAILS NOT SHOWN.

1. ALUMINUM TREADPLATE EXTERIOR REAR WALL OF CAB
2. MOUNTING BASE FOR ANTENNA LOCATED PER SHOP ORDER
3. BATTERY CHARGER LOCATED IN COMPARTMENT D3
4. BATTERY CHARGE INDICATOR LOCATED ON D.S. SEAT RISER
5. PERIMETER SCENE LIGHTS LOCATED PER SHOP ORDER
6. ONE 12V L.E.D. LIGHT STRIP LOCATED ON EACH SIDE IN THE HOSEBED
7. PIERCE L.E.D. DUAL COMPARTMENT LIGHT STRIPS LOCATED PER SHOP ORDER
8. PAINTED SHELF TRACKS LOCATED IN COMPARTMENTS D1, D3, P1, P2, P3
9. ONE FULL WIDTH/DEPTH PAINTED ADJUSTABLE SHELF IN COMPARTMENTS D1, P1, P2, TWO IN D3, P3
10. ONE FLOOR MOUNTED SLIDE-OUT TRAY IN COMPARTMENTS D1, P1, R1
11. ONE SWING-OUT ALUMINUM TOOLBOARD LOCATED IN COMPARTMENT D2
12. ONE SLIDE-OUT ALUMINUM TOOLBOARD LOCATED IN COMPARTMENT D3
13. ONE VERTICAL PARTITION LOCATED IN COMPARTMENT D3
14. ALL FOLDING STEPS TO BE TRIDENT WITH INTEGRATED L.E.D. LIGHT UNLESS SPECIFIED
15. (1) 120V DUPLEX RECEPTACLE IN P.S. EMS COMPARTMENT
16. AIR INLET DISCONNECT COUPLING ON D.S. PUMP PANEL

REV	DATE	BY	CH	QUANTUM	TITLE
▽	28APR15	JWO	TWH	MAKE	CHASSIS DATA
▽	26MAR15	JWO	TWH	PIERCE	FOR
▽	25MAR15	JWO	TWH	MODEL	FOR

		JOB NO.	28597
		SCALE	DATE
TITLE 1250-D-750P W/30G FOAM, FULL HEIGHT, FDLER (1) X-LAY, (2) SPD-LAYS, DELUGE, BOOSTER REEL		DRAWN BY	JWO
FOR ST. JOHNS COUNTY ST. AUGUSTINE, FLORIDA		CHECKED BY	MNE
DWG NO. 28597AD		SHEET SIZE	D
		SHEET NO.	1 OF 1