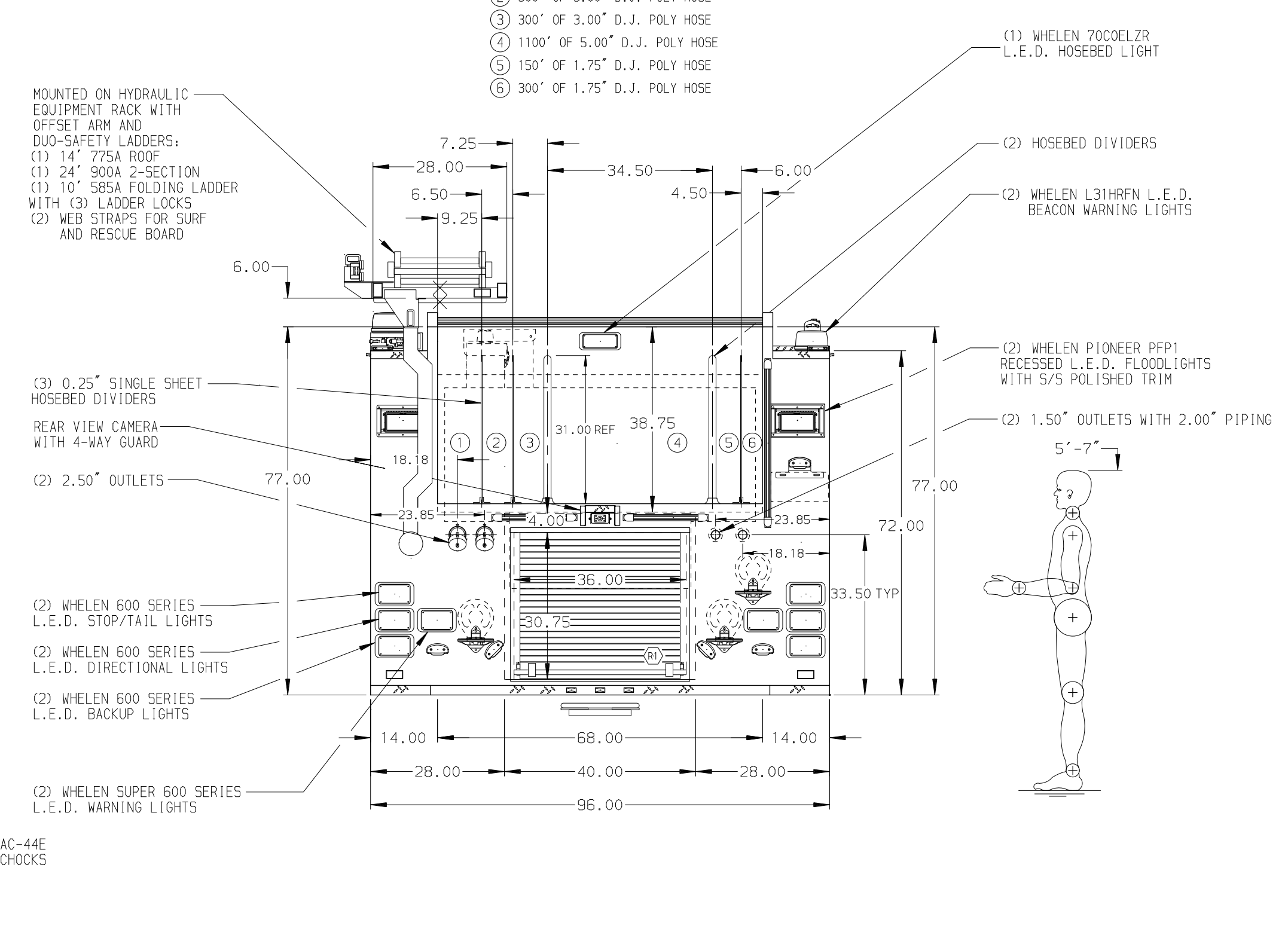


- HOSEBED CAPACITIES
- ① 400' OF 2.50" D.J. POLY HOSE
 - ② 300' OF 3.00" D.J. POLY HOSE
 - ③ 300' OF 3.00" D.J. POLY HOSE
 - ④ 1100' OF 5.00" D.J. POLY HOSE
 - ⑤ 150' OF 1.75" D.J. POLY HOSE
 - ⑥ 300' OF 1.75" D.J. POLY HOSE



ALUMINUM BODY

FRONTAL IMPACT PROTECTION

NOTE
DIMENSIONS SHOWN ARE APPROXIMATE AND ARE SUBJECT TO MINOR DEVIATIONS AS MAY OCCUR OR BE NECESSARY IN CONSTRUCTION. MINOR DETAILS NOT SHOWN.

- NOTES:
1. KUSSMAUL BATTERY CHARGER LOCATED IN CREW CAB SEAT RISER
 2. TWO HIGH RISE PACK STORAGE BRACKETS IN COMPARTMENT P1
 3. PAC TRAC MOUNTING SYSTEM INSTALLED ON TANK WALL OF COMPARTMENT D1, D2, D3 & P2
 4. THREE ADJUSTABLE SHELVES (500#) LOCATED IN COMPT. P3-(2 UPPER, 1 LOWER)
 5. ONE SHELF TRACK SET IN COMPARTMENT P3
 6. AKRON EDUCATOR SINGLE AGENT FOAM SYSTEM
 7. BATTERY CHARGE INDICATOR LOCATED ON D.S. SEAT WITH BRACKET
 8. S/STL SCUFFPLATES ON REAR CORNERS OF CAB
 9. KEYPED LOCK FOR ROLL-UP DOOR OF COMPARTMENT P3
 10. L.E.D. DUAL LIGHT STRIPS IN COMPARTMENTS D1, D3, P1, P3, & R1

11. L.E.D. LIGHT STRIP ON CEILING OF COMPARTMENTS D2 & P2
12. ALUMINUM GRATING ON FLOOR OF COMPARTMENT D3
13. S/STL PROTECTIVE GUARD FOR ROLL-UP DOOR LOCATED D1, D2, D3, P1, P2, P3, & R1
14. ONE 120V RECEPTACLE LOCATED IN COMPARTMENT P3

REV	DATE	BY	CH	VELOCITY
18MAR16		MWA	ANG	PIERCE
18FEB16		MWA	ANG	MODEL

		JOB NO.	29715
		SCALE	DATE
TITLE	1500-D-500P 152 BDY F.H.T./FRT & REAR,FDLER-DS & PS	DRAWN BY	MWA
FOR	(2) CROSSLAYS, HYD. EQUIP. RACK, 40G FOAM CELL	CHECKED BY	KBO
	CITY OF CLEARWATER FIRE DEPARTMENT	SHEET SIZE	SHEET NO.
	CLEARWATER, FL	D	1 OF 1
DWG NO.	29715AD		