

# LIBERTY

“BUILT FOR LIFE” ...  
BUILT BY YOU!



Designed to meet today's budget, while offering a progressive options package to meet tomorrow's demands!

The Liberty is a focus unit that allows you to select the options that are the most important to your department personnel. This unit is built on multiple-chassis platforms allowing flexibility to utilize Ford or Ram. The 156" module shares the same Braun quality as the larger units in our product line up while maintaining the highest safety standards in the industry.

The Liberty utilizes all aluminum welded interior cabinets to provide additional structure and provides more customer usable payload. The cabinets utilize Braun's "Take The Edge Off" rounded corners. The Liberty, as with all Braun

models, provides the customer the ability to customize interior and exterior to fit the department's or agencies needs.

Featuring the advanced manufacturing and product innovations that Braun has become known for, the Liberty includes SolidBody™ Construction, EZ Glide™ Sliding Door, Eberhard Free Floating Latches, the MasterTech™ Multiplex Electrical Control System and VitalMax™ Lighting System. The Liberty is designed to adapt to every department while offering a progressive options package to meet today's budgets and tomorrow's demands.

# TEN-8

IN SERVICE TO SERVE YOU

A local dealer and service center for:



**BRAUN**  
CUSTOM AMBULANCES  
*Built for Life*



# LIBERTY



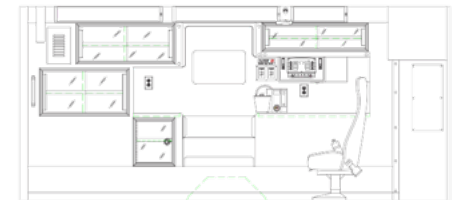
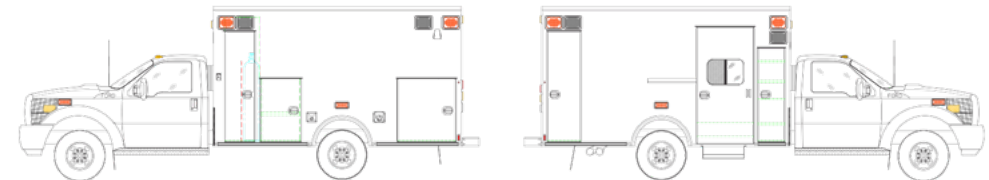
## QUICK SPECIFICATIONS

|                 | Ford F-450 | Ram D-4500 |
|-----------------|------------|------------|
| Wheel Base      | 165        | 168        |
| Overall Length  | 288.5      | 293.5      |
| Overall Width   | 98         | 98         |
| Overall Height  | 109.75     | 109.75     |
| Module Length   | 156        | 156        |
| **Module Width  | **96       | **96       |
| Module Headroom | 72         | 72         |

*\*\*Add 2" for overall width to include the rub rails and exterior side warning lights.*

## FEATURES & BENEFITS:

- Braun's Exclusive SolidBody™ Construction | **Safety, Stronger Yet Lighter Module**
- Life-Time Transferable Structural Warranty | **Greater Value & Lower Life Cycle Cost**
- SealTite™ Doors | **Eliminates Weather & Road Debris Entering Compartment**
- MasterTech™ Multiplex Electrical Control System | **Ease of Use & Maintenance**
- Fully Welded-in Aluminum Interior Cabinetry | **Stronger & Lighter Weight**
- "Take The Edge Off" Rounded Interior Aluminum Cabinets | **Safety**
- Anti-corrosion Package | **Prolonged Usage & Better Aesthetics**
- Eberhard Free Floating Latches | **Ease of Use & Maintenance**
- Aluminum, One-piece Headliner | **Safety, Stronger & Lighter**
- VitalMax™ Lighting System | **Superior Shadowless Lighting**
- EZ Glide™ Sliding Door | **Safety**



2904 59th Ave. Dr. E.  
Bradenton, FL 34203

Sales: 877-989-7660  
Service: 800-228-8368 or 941-756-7779

