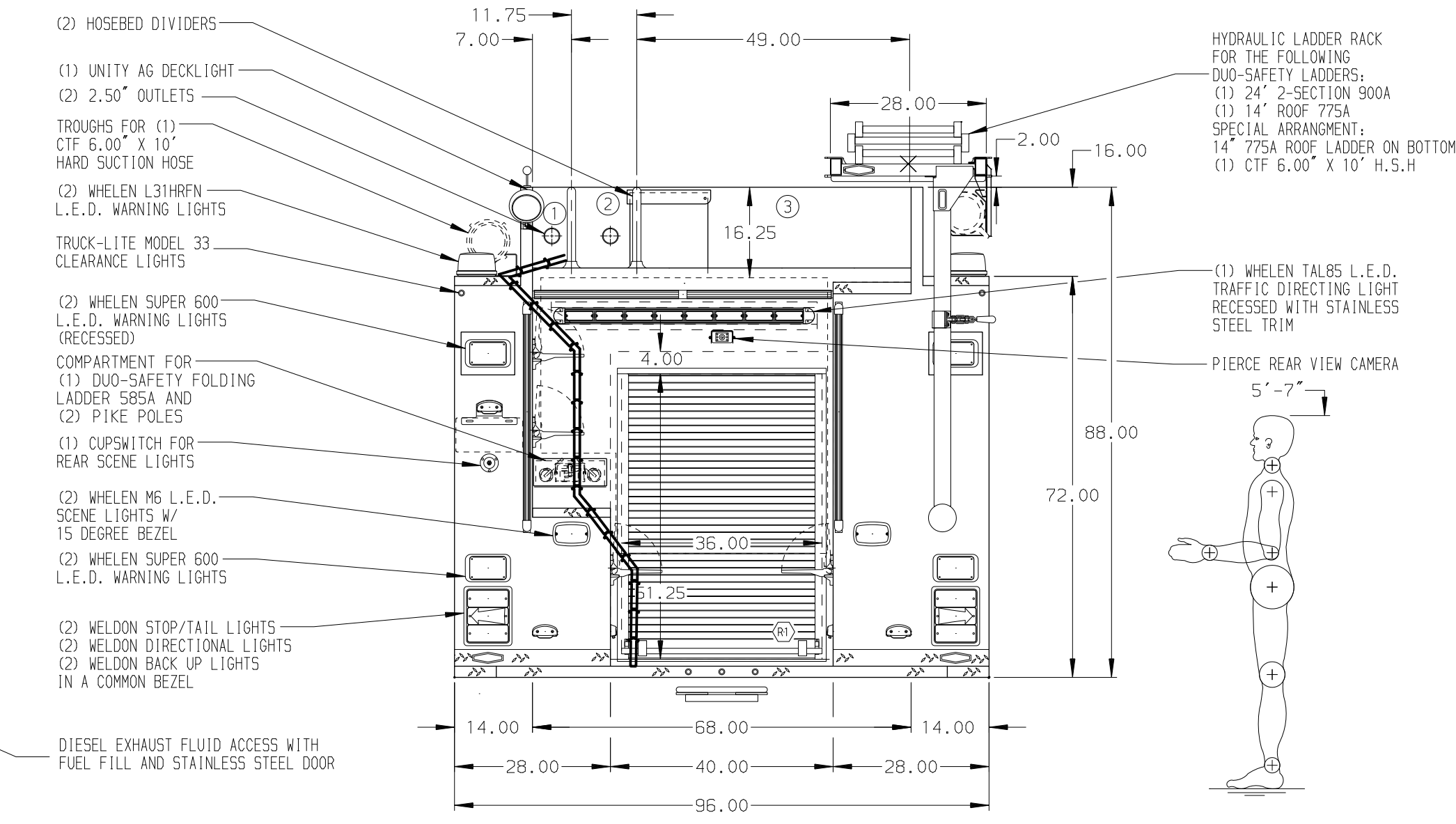
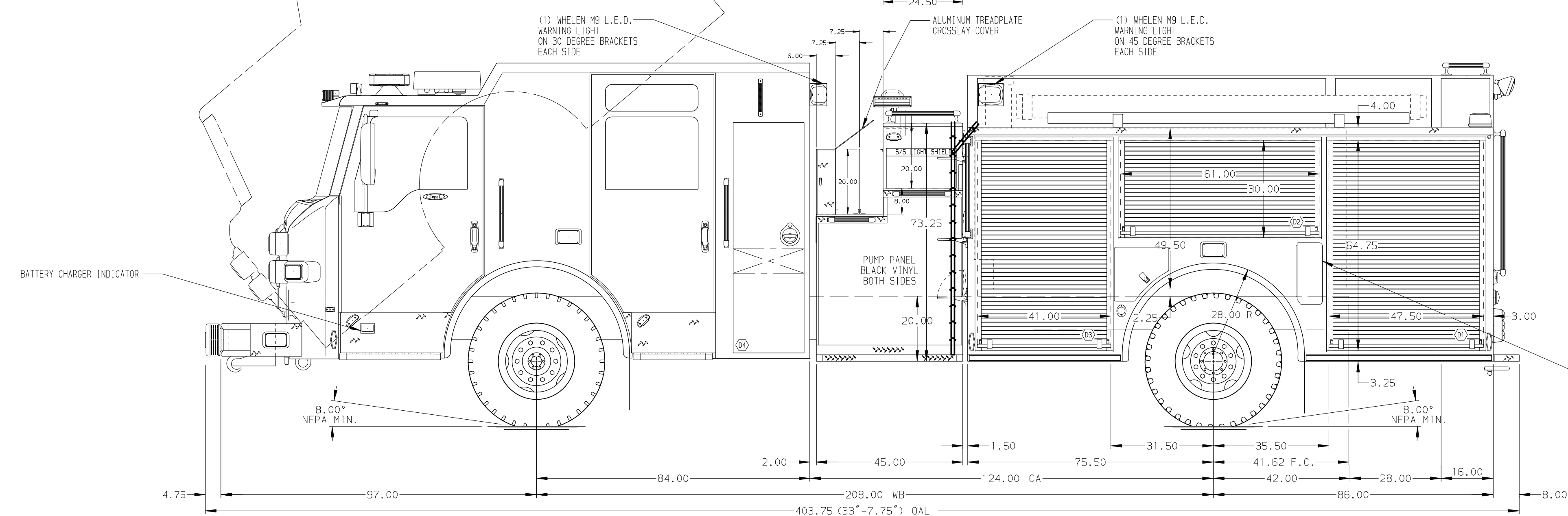


- HOSEBED CAPACITIES
- ① 200' OF 3.00\"/>



ALUMINUM BODY

NOTE
DIMENSIONS SHOWN ARE APPROXIMATE AND ARE SUBJECT TO MINOR DEVIATIONS AS MAY OCCUR OR BE NECESSARY IN CONSTRUCTION. MINOR DETAILS NOT SHOWN.

1. CTF WHEEL CHOCKS AND MOUNTING BRACKETS
2. BATTERY CHARGER LOCATED BEHIND DRIVER'S SEAT
3. ONE FULL WIDTH/DEPTH PAINTED ADJUSTABLE SHELF IN COMPARTMENTS D3 & R1, AND TWO IN D1 & P3
4. ONE FLOOR MOUNTED SLIDE-OUT W/O SIDES TRAY IN COMPARTMENTS D1, P1, & R1
5. ONE VERTICAL PARTITION LOCATED IN COMPARTMENTS D3, P2, & P3
6. ONE ADJUSTABLE TILTING SLIDE-OUT TRAY IN COMPARTMENTS P1 & P2
7. SMOOTH ALUMINUM TOOL BOARD WITH TRACKS IN COMPARTMENT D2 & D3
8. AIR INLET/OUTLET W/ DISCONNECT FITTING LOCATED ON D5 PUMP PANEL
9. 120V SHORELINE RECEPTACLE W/ KUSSMUL SUPER AUTO EJECT LOCATED ON D5 PUMP PANEL
10. TWO FIRE EXTINGUISHER STORAGE BINS LOCATED IN COMPARTMENT P3

11. ONE SLIDE OUT TOOLBOARD LOCATED IN COMPARTMENT D3

REV	DATE	BY	CH	IMPEL
1	22AUG16	JWO	LPA	PIERCE
2	15JUL16	JWO	LPA	MODEL

		JOB NO.	30057
		SCALE	1:24
TITLE 1250-D-1000 GAL POLY, 161" D5 FDLR PS FHF0 (2) XLAYS, DELUGE, HYDRAULIC LADDER RACK FOR OSCEOLA COUNTY PUBLIC SAFETY KISSIMMEE, FLORIDA		DATE	28APR16
		DRAWN BY	JWO
DWG NO. 30057AD		CHECKED BY	JBL
		DATE	29APR16
		SHEET SIZE	D
		SHEET NO.	1 OF 1