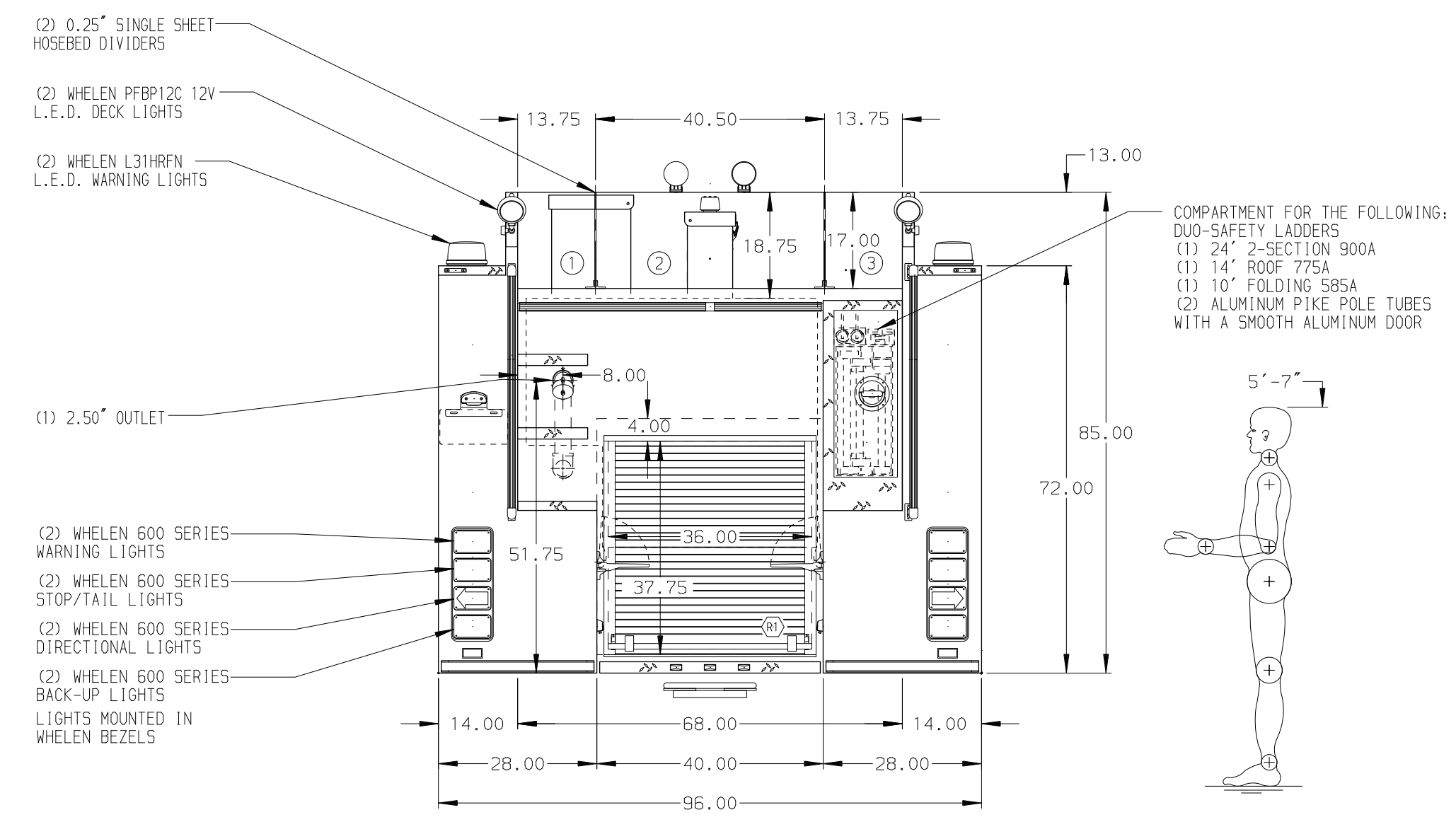
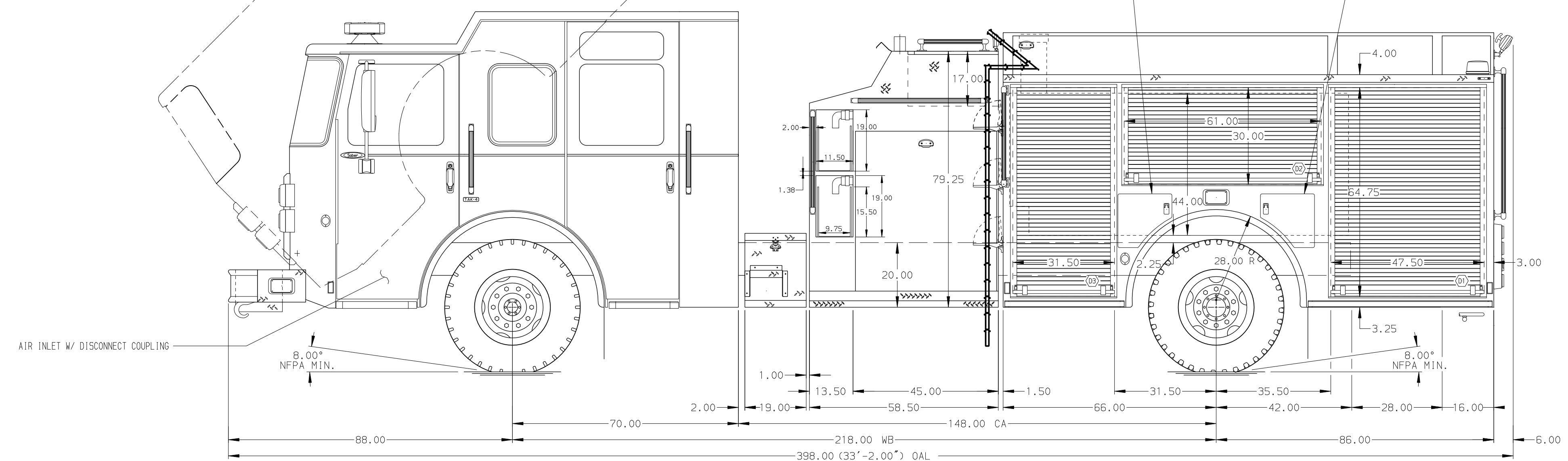


HOSEBED CAPACITIES

① 500' OF 2.50" D.J. HOSE

② 1000' OF 5.00" D.J. HOSE

③ 500' OF 2.50" D.J. HOSE



ALUMINUM BODY

NOTE  
DIMENSIONS SHOWN ARE APPROXIMATE AND ARE SUBJECT TO MINOR DEVIATIONS AS MAY OCCUR OR BE NECESSARY IN CONSTRUCTION. MINOR DETAILS NOT SHOWN.

		JOB NO.	30232
		SCALE	1:24
<b>MANUFACTURING INC.</b>		DATE	
		DRAWN BY	GVH
TITLE 1500-D-780P, 750 GAL WATER W/ 30 GAL FOAM SYSTEM 152" PUMPER BODY, TOP CONTROL, LADDERS BESIDE TANK		CHECKED BY	CDU
		FOR	PIERCE FIELD UNIT BRADENTON, FLORIDA
MAKE PIERCE MODEL SABER FR		SHEET SIZE	D
		SHEET NO.	1 OF 1
DWG NO.		30232AD	

REV	DATE	BY	CH
27MAY16	JLA	CAG	
25APR16	GVH	KBO	