



HEAVY DUTY 3.5 YD REAR LOADER



Built just like our reliable Heavy Duty model, but with more hopper capacity.

- 3.5-cubic-yard hopper for those routes that need a truck with little more loading capacity.
- Compaction force that can handle up to 1,000 pounds of refuse per cubic yard.
- Fast pack cycle time and pack-on-the-go hydraulics keep the hopper clear and help save time, especially on routes crowded with stops.

- Tough abrasion-resistant steel used in the rear loader's highest wear areas, featuring 1/4" AR200 on the hopper floor and AR450 on the sidewalls.
- Like all McNeilus rear loaders, the Heavy Duty 3.5 draws a top resale value of any similar refuse truck.
- Optional McNeilus® Excalibre™ packing cylinders feature a hardened nitrided rods and a patented tool steel shaver that keep refuse debris out, reducing hydraulic contamination.

PERFORMANCE SPECIFICATIONS (in seconds)*

WORKING RPM @ IDLE

Dump Cycle	20
Sweep Extend	5
Sweep Retract	3
Slide Extend	4
Slide Retract	8
Tailgate Open	30
Tailgate Closed	18
Compaction = 1,000 lb/yd ³	
Quick Change UHMW Polyethylene Slide Shoes	
	20 YD ³ 25 YD ³ 28 YD ³ 32 YD ³
Ejector Extend	12 20 27 33
Ejector Retract	13 28 30 40

*Cycle times may vary slightly

STANDARD BODY SPECIFICATIONS

Body Floor	3/16 in. AR200
Side Walls, Front Section	10-gauge AR200
Side Walls, Rear Section	1/8 in. AR450
Roof	10-gauge AR200

HOPPER SPECIFICATIONS

Hopper Capacity	3.5 cu yd
Hopper Floor	1/4 in. AR200

PACKER/EJECTOR SPECIFICATIONS

Slide Face Plate	1/4 in. grade 50 high-strength steel
Sweep Face Plate	1/4 in. AR200
Packer Edge Strip	1/4 in. grade 50 high-strength steel

TAILGATE SPECIFICATIONS

Tailgate Walls	1/4 in. AR200
Wear Strips	1/2 in. x 3 in. 1044 steel
Tailgate Seal Height	55 in

OPERATIONS

Mechanical controls with integrated control panel

HYDRAULICS

Pump	Single gear or vane with pack-on-the-go flow control system
Control Valves	Primary; Parker VA35 with Smart-Pak®
Oil Reservoir	20 yd ³ : 40 gallon 25-32 yd ³ : 50 gallon
Filter	Parker 40 CN, 100 mesh suction strainer

CYLINDERS

Ejector Cylinder	20 YD ³ : 7-1/4 in. bore x 5-3/4 in. rod x 88-3/4 in. stroke (3-stage) 25 YD ³ : 7-1/2 in. bore x 7 in. rod x 119-1/2 in. stroke (4-stage) 28 YD ³ : 7-1/2 in. bore x 7 in. rod x 138 in. stroke (4-stage) 32 YD ³ : 8-3/4 in. bore x 8-1/4 in. rod x 163 in. stroke (5-stage)
Slide Cylinders	5 in. bore x 4 in. rod x 38-5/8 in. stroke
Sweep Cylinders	4-1/2 in. bore x 3-1/2 in. rod x 25-5/8 in. stroke
Tailgate Cylinders	3-1/2 in. bore x 3 in. rod x 42 in. stroke

PAINTING

Packer and components steel shot blasted prior to priming with high solids epoxy primer
Finish: PPG high-performance, high solids acrylic urethane topcoat

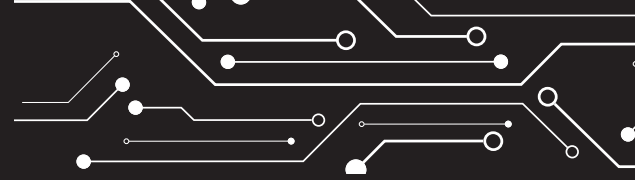
POPULAR OPTIONS

- Spool Winch or Reeving Cylinder
- Guides and Latches
- Container Lift Bar

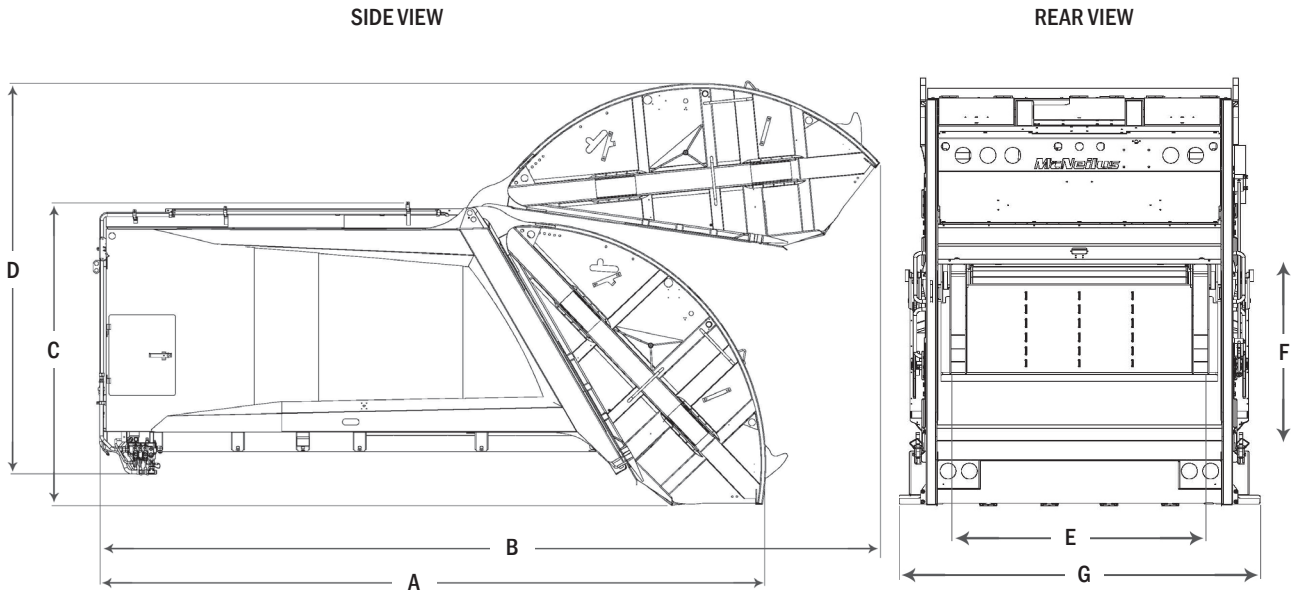
McNEILUS WARRANTIES

Contact your McNeilus representative on warranty details.
For more information, go to www.McNeilusGarbageTrucks.com

HEAVY DUTY 3.5 YD REAR LOADER



- McNeilus CNG Systems and Service offers compressed natural gas systems in a variety of configurations and capacities for the Heavy Duty Rear Loader.
- McNeilus partners with top equipment dealers across North America to provide best-in-class support and access to service and parts close to home.
- Proudly made in the USA.



DIMENSIONS								
DESCRIPTION	20 YD ³ (15.3 M ³)		25 YD ³ (19.1 M ³)		28 YD ³ (21.4 M ³)		32 YD ³ (24.5 M ³)	
(A) Overall Length, Tailgate Closed	253 in.	6426 mm	285 in.	7239 mm	305 in.	7747 mm	329 in.	8357 mm
(B) Overall Length, Tailgate Raised	262 in.	6655 mm	294 in.	7468 mm	313 in.	7950 mm	338 in.	8585 mm
(C) Overall Height, Tailgate Closed**	99 in.	2515 mm	99 in.	2515 mm	99 in.	2515 mm	99 in.	2515 mm
(D) Overall Height, Tailgate Raised**	150 in.	3810 mm	150 in.	3810 mm	150 in.	3810 mm	150 in.	3810 mm
(E) Inside Hopper Width	80 in.	2032 mm	80 in.	2032 mm	80 in.	2032 mm	80 in.	2032 mm
(F) Hopper Opening Height	60 in.	1524 mm	60 in.	1524 mm	60 in.	1524 mm	60 in.	1524 mm
(G) Overall Width w/Steps	102 in.	2591 mm	102 in.	2591 mm	102 in.	2591 mm	102 in.	2591 mm
Overall Width w/o Steps	96 in.	2438 mm	96 in.	2438 mm	96 in.	2438 mm	96 in.	2438 mm

Note: Dimensions will change with roof/tailgate-mounted CNG options.

**Dimension with no winch. Adding a spool winch or reeving cylinder winch will increase height dimension to between 100-108 inches depending on the option chosen.



We offer a complete line of aftermarket parts and services to fit all makes and models.

Ten-8 Industrial

Ten8Industrial.com | 877.989.7660

